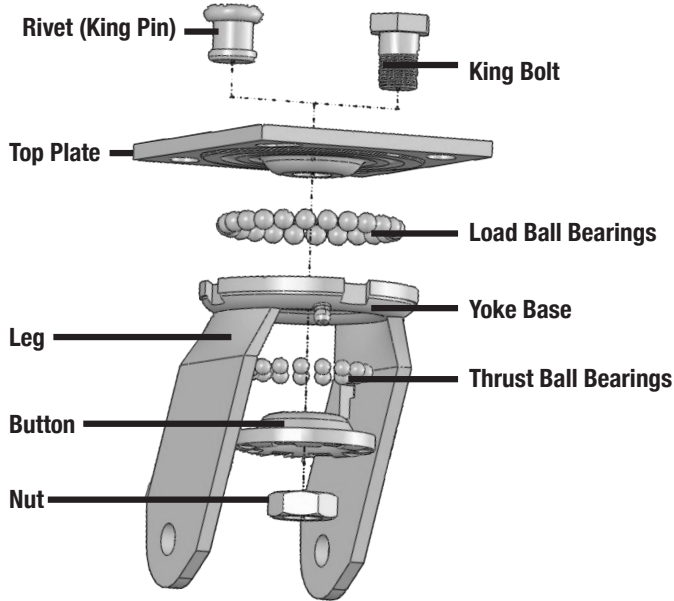


# CASTER COMPONENTS

## KINGPIN RIG

CONVENTIONAL CONSTRUCTION

• UP TO 2,000 LB. CAPACITY

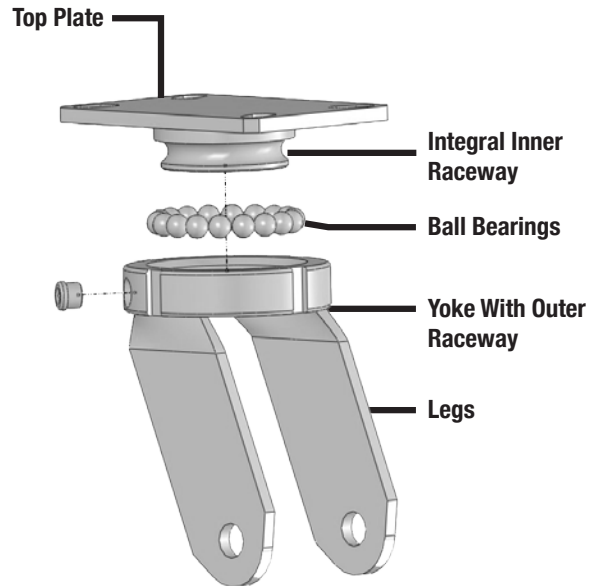


## KINGPINLESS RIG



BETTER ERGONOMICS, BEST FOR SHOCK AND IMPACT

• UP TO 20,000 LBS. CAPACITY

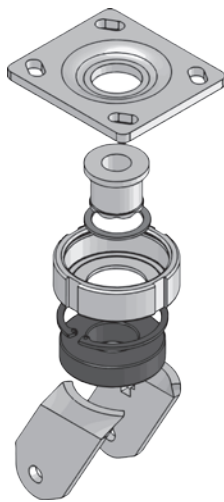


## MAINTENANCE FREE SWIVEL SECTION

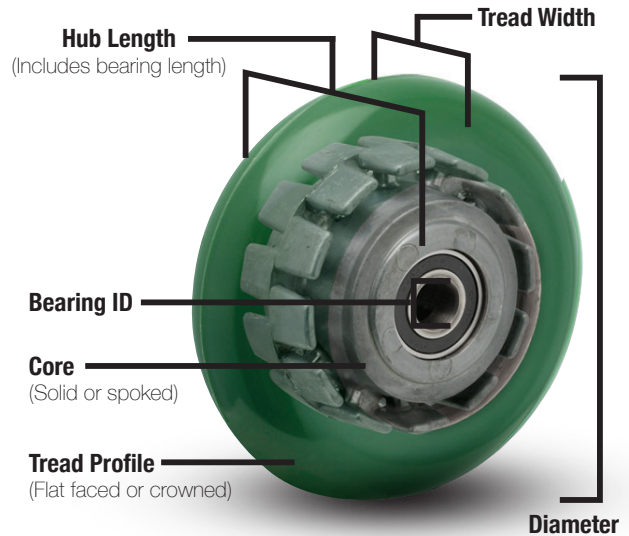


SEALED PRECISION SWIVEL BEARING PROVIDES EXCELLENT ERGONOMICS WITH NO MAINTENANCE

• UP TO 2,000 LBS. CAPACITY



## WHEEL



**ALBION**<sup>®</sup>  
the caster experts

Need help determining the right solution for your application?

Let us help! Connect with us online at [www.albioncasters.com](http://www.albioncasters.com) or call us at 800-835-8911.

# Rig SELECTION GUIDE

The right rig can make a big difference in the life and ergonomics of your caster.

## Kingpin

MEDIUM HEAVY DUTY KINGPIN



Pages:  
23-34

- » 140 – 2,000 lbs capacity
- » Conventional caster construction
- » Variety of raceway designs to support performance and load requirements

HEAVY DUTY KINGPIN



Pages:  
59-74

- » 700 – 17,000 lbs capacity

## Heavy Duty Kingpinless

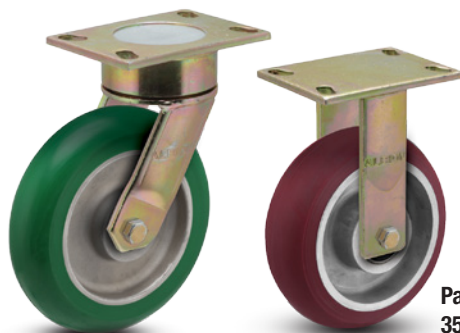
LONGER LASTING THAN CONVENTIONAL CASTERS



Pages:  
41-58

- » 300 – 20,000 lbs capacity
- » Best for rugged applications where impact, shock, or regular swiveling is present
- » Eliminates kingpin failures

## Maintenance Free



Pages:  
35-40

- » 350 – 2,000 lbs capacity
- » Designed for ergonomics and light to medium duty towing. Smooth, easy, and quiet mobility.

## Stainless Steel



Pages:  
75-86

- » 200 – 3,000 lbs capacity
- » Well suited for applications exposed to cleaning agents, steam, caustic solutions, or other corrosive agents which could cause rust

## Spring Loaded



Pages:  
87-99

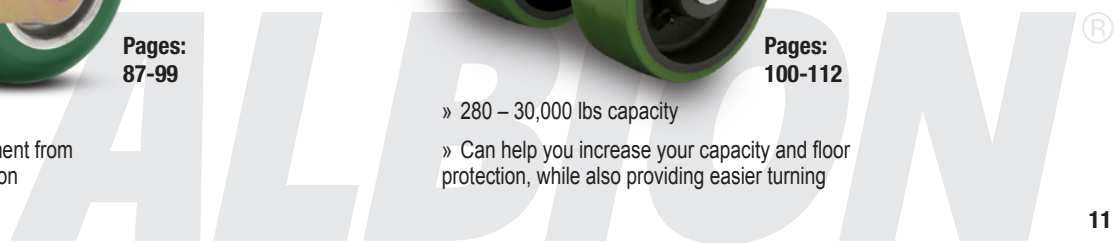
- » 500 – 3,000 lbs capacity
- » Protects cargo and equipment from shocks and unwanted vibration

## Dual Wheels



Pages:  
100-112

- » 280 – 30,000 lbs capacity
- » Can help you increase your capacity and floor protection, while also providing easier turning



# SELECTION GUIDE

## Wheel Material

Selecting the right wheel can make a big difference in the performance and life of your caster. To determine what material would work best for your application, please review the below material descriptions and features — or connect with us at [www.albioncasters.com](http://www.albioncasters.com) or 800-835-8911 for specification assistance.

### Polyurethane capacities up to 10,900 lbs



#### Description:

Albion's polyurethane wheels are uniquely formulated and open cast or injection molded to clean, close tolerance cores. Each unique formula is designed for specific mobility benefits, including: ergonomics, shock absorption, noise reduction, debris rejection, and overall durability.

#### Features:

- » Non-marking, floor protective
- » Resists chemicals and oils
- » Excellent capacity, wear resistance, and strength
- » Quieter and more shock absorbing than metal wheels
- » Designated wheels are towable
- » Various durometers, thicknesses, tread profiles and colors available

### Rubber capacities up to 3,630 lbs



#### Description:

Rubber wheels provide exceptional floor protection, shock absorption, and our more advanced formulas even reject metal shavings and debris (X-tra Soft, MG, NP, SZ/SV). Various options can be found throughout our rubber wheel offering, including: non-marking formulas, no-maintenance/semi/fully pneumatic wheels, and a variety of durometers and color choices.

#### Features:

- » Floor protection
- » Quiet mobility
- » Cost effective
- » Shock absorption
- » Indoor/outdoor use (pneumatic family)

### Metal capacities up to 20,000 lbs



#### Description:

Metal wheels offer the highest capacity, temperature resistance, and strength for your most abusive indoor/outdoor applications and floor conditions. Albion offers a range of materials to best suit your application, including: cast iron, ductile, and drop forged steel options.

#### Features:

- » Highest load capacities
- » Handles the most abuse
- » Impact resistant
- » Resistant to hot and cold temperatures

### Phenolic capacities up to 8,000 lbs



#### Description:

Phenolic wheels are constructed of heavy macerated materials impregnated with phenolic resins – and then molded under high heat and pressure to produce a quality, but economical industrial wheel.

#### Features:

- » High load capacities
- » Resistant to chemicals and oils
- » Impact resistant
- » Economical
- » High-temp options

### Nylon & Glass Filled capacities up to 7,200 lbs



#### Description:

Offering high load capacities and greater floor protection than conventional metal or phenolic wheels, our range of Nylon and Glass-Filled wheels are a perfect fit for helping reduce wheel noise or in clean applications requiring frequent wash downs.

#### Features:

- » High load capacities
- » Impact resistant
- » Corrosion resistant
- » Resistant to chemicals and oils
- » High-temp options

### Polypropylene capacities up to 1,000 lbs



#### Description:

Injection molded from a blend of thermoplastic polymers, Polypropylene wheels are our most economical and lightest wheel option with comparable load ratings to hard rubber wheels.

#### Features:

- » Most economical
- » Resistant to chemicals and oils
- » Lightweight
- » High-temp options

# Wheel Bearing

# SELECTION GUIDE

To understand how bearing codes are represented in part numbers, please visit [page 18](#).

## Roller



Roller bearings are the standard bearing in most caster applications. 1-1/2 and 2 inch width wheels feature a cage separating hardened steel rollers and a hardened steel split outer race. These bearings must be used on a hardened bushing or shaft. Maximum temperature range is 350°F. All Casters and wheels are rated up to 2.5 mph operation per the Institute of Caster & Wheel Manufacturers Guidelines.

BEARING CODE:  
**01, 05, 07**

## Drawn Cup Roller



These are roller bearings as described above except they have metal cages holding the precision ground rollers. The outer race is a one-piece construction, giving added rigidity to the wheel bore. These bearings must be used on a hardened bushing or shaft. Maximum temperature range is 400°F.

BEARING CODE:  
**02**

## Precision Tapered Roller



The tapered roller is the most effective bearing for heavy or towed loads. The taper allows for some thrust loading, while the heat-treated inner and outer race allow for maximum load capacity. Maximum temperature range is 400°F.

BEARING CODE:  
**09**

## Bronze



Excellent for wash-down or steam cleaning applications. Bronze bearings are designed for temperatures up to 525°F.

BEARING CODE:  
**22**

## Oilex



These bearings are made of oil-impregnated sintered iron. Completely self-lubricating, these are ideal for situations where rolling force is less critical and accessibility for lubrication is difficult. Maximum temperature range is 450°F.

BEARING CODE:  
**23**

## Radial Ball (Industrial Ball)



Shielded ball bearings are often referred to as "industrial grade" bearings. Pressed into the hub of lower capacity wheels, these low cost bearings decrease the effort required to move a load. Maximum temperature range is 250°F.

BEARING CODE:  
**27**

## Precision Sealed Ball



Completely sealed, these precision ground ball bearings are held in a metal spacer ring between two hardened raceways. This bearing never needs to be lubricated, and with the lowest rolling resistance of all bearings it provides the most ergonomic situation available. Maximum temperature range is 250°F.

BEARING CODE:  
**28**

## Pedestal Precision Ball



These sealed precision ball bearings include an integral spanner which eliminates need for separate spanner. Maximum temperature range is 250°F.

BEARING CODE:  
**29**

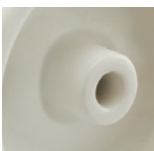
## Annular Ball



A precision type bearing where the machined outer race and inner race are held together by the bearings. This option offers easy rolling and quiet operation for light to medium duty loads. This bearing must be factory installed in the wheel. Designed for temperatures up to 160°F.

BEARING CODE:  
**31**

## Plain Bore



In this option, no bearing material is used. The wheel runs directly on the axle or spanner bushing. This is the least expensive bearing option, but also results in a higher rolling resistance.

BEARING CODE:  
**41**

## Two Piece Delrin



A DuPont™ engineered material, Delrin is designed for use in situations in which a self-lubricating material is optimal and corrosion cannot be tolerated. Ideal for wash-down or steam-cleaning applications as well as total immersion. Maximum temperature range is 160°F.

BEARING CODE:  
**51**

## One Piece Delrin



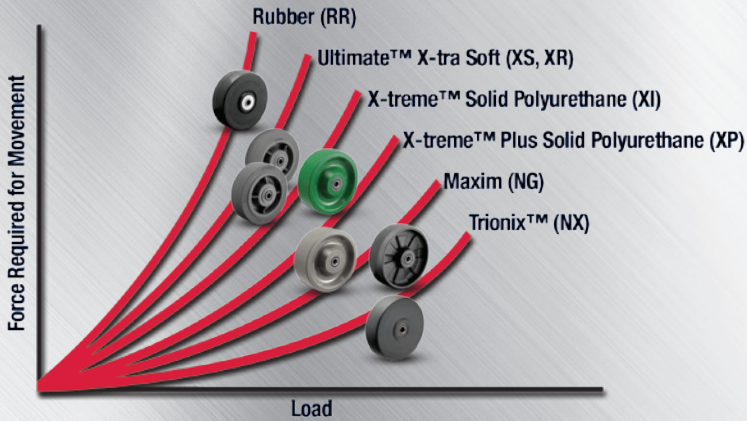
This is a one-piece version of the Delrin bearing listed above. Good for use where thrust washers are needed or to add rigidity to a soft wheel which might cause the two piece bearing to be ejected from the bore of the wheel. Maximum temperature range is 160°F.

BEARING CODE:  
**52**

# ERGONOMOMIC EXPERTS



The **right rig, wheel and bearing** can have a **BIG IMPACT** on your business and employees!



For more than 60 years Albion has been committed to easing the load of moving products through your facility. Long before ergonomics was popular, we were developing casters and wheels to reduce fatigue, reduce repetitive motion and improve productivity.

We have accelerated efforts to develop casters that ease the effort needed to start a cart in motion or swivel while in operation. Also, we explore the latest materials technologies to deliver wheels that offer the best performance and the best ergonomic qualities.

Leading the way in Albion's efforts toward ergonomic excellence are our maintenance free **18 Series** (pages 36-37) and **68 Series** (pages 38-39), along with a variety of other rig and wheel combinations throughout our **Heavy Duty Kingpinless** lineup (pages 41-58). Our maintenance free casters reduce the effort needed to bring a caster in line by **over 30%** in contrast to conventional dual ball raceway kingpin casters – plus they **reduced noise by 15%!**

**WORKPLACE SAFETY & COST SAVINGS**

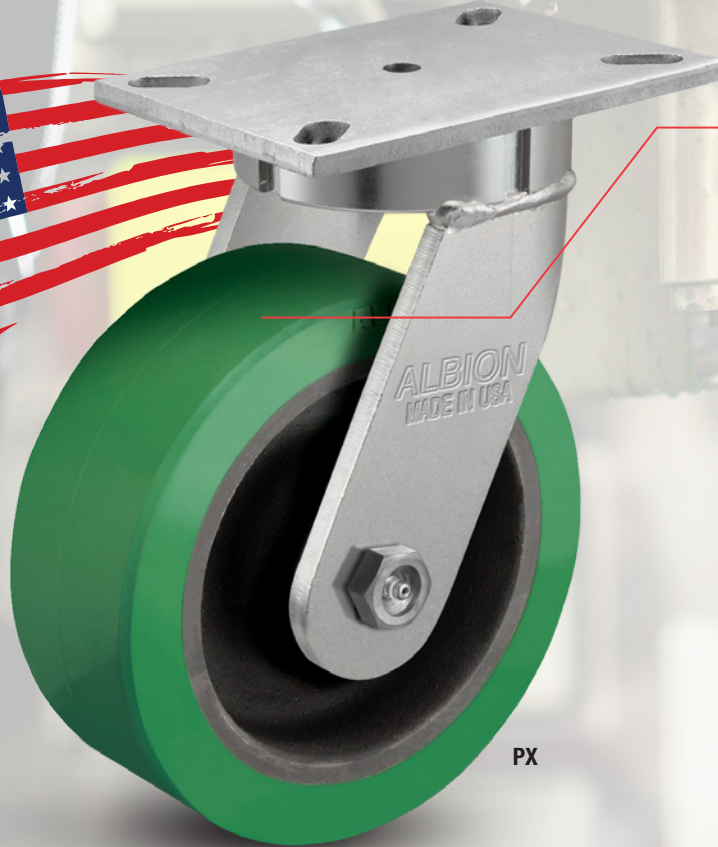
- ▶ PUSH/PULL EASIER
- ▶ TURN EASIER
- ▶ REDUCE NOISE
- ▶ BOOST EFFICIENCY



## LET US HELP

improve your employee satisfaction and bottom line through our ergonomic experience today! Connect with us **online at [www.albioncasters.com](http://www.albioncasters.com)** or **call 800-835-8911.**

# POLYURETHANE EXPERTS



- Strong tread bond for long life
- Close tolerance cores for precise manufacturing and quality control
- Superior material blends for the highest quality treads

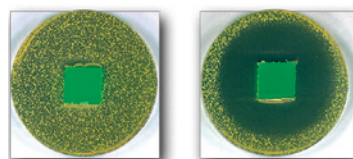


**ALBION**  
the caster experts

- ▾ Albion offers an expansive range of polyurethane wheels, with various material blends designed to deliver specific features and application benefits (see pages 146-165 for full offering)
- ▾ Our popular **80A** and **95A** durometer wheels are **designed and proven for industrial use**—many offering a **3 year warranty**
- ▾ New formulas and tread profiles continue to be developed to **enhance ergonomics (AX, PF, and UA wheels)**
- ▾ Standard and custom keyway inserts are available
- ▾ Custom machining and crown facing
- ▾ Cutter bars, brakes, and sound dampening pads available

- ▾ Custom colors available (minimums may apply)
- ▾ **Specialty Wheel Development** – Albion’s team of engineers has significant experience designing and developing new wheels for specialty applications in virtually any industry. Contact factory with your needs!
- ▾ **Anti-Microbial Additives** – Bacterial inhibitors are available in many of our urethane products. If your food, medical, or laboratory application requires additional peace of mind, this is a great wheel solution.

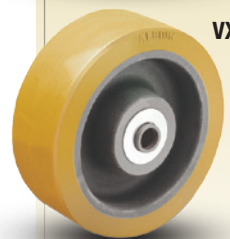
## PREVENZ™ ANTIMICROBIAL\*



\*Please contact factory for ordering information.

## VULKOLLAN® WHEELS (VY/VX)

- **Highest quality** polyurethane in the world
- **Superior** in load capacity, reliability, strength, and life
- **Reduce** your downtime and maintenance costs with Vulkollan!



# CUSTOM SOLUTIONS



## IDENTIFY YOUR NEEDS.

- Capture Your Vision
- Identify All Requirements
- Evaluate Safety and Ergonomics

## DESIGN IT.

- Leverage Proven Knowledge Base
- Create Solid 3D Model Design
- Finite Element Analysis (FEA)
- 3D Printing
- Rapid Prototyping



With more than 500,000 standard caster models available, it's likely that Albion has just the right caster for your application. However, if you have a unique application that requires a custom need, our experienced sales and engineering teams can partner with you to create a practical solution that meets your needs.

Whether it's a modification to an existing product or a brand new custom design, Albion has the engineering experience and technology to bring your concept to life.

# ALBION®



## TEST IT.

- ANSI ICWM Standards
- Durability & Impact
- Ergonomic Push/Pull
- Brake & Accessory Fatigue
- Customer Specified Testing



## BUILD & DELIVER IT.

- U.S. Heavy Duty Manufacturing
- Global Supply Chain
- CNC: Laser, Bender, Machining
- Robotic & Skilled Manual Welding
- Experienced Finishing & Assembly

At Albion, every custom project is led by a single project manager. Our comprehensive process begins by capturing the customer vision and all application requirements, and ends with a customer approved product that has been tightly audited throughout the production process. Every stage is scrutinized and reviewed, providing a solid framework for all new product innovations. This process ensures that your mobility solution is brought to life on-time and on-budget.

### ACCREDITATION AND AFFILIATES



With our proven design and manufacturing experience, we guarantee select Albion casters with up to a three (3) year warranty from date of purchase; look for the 3 year warranty icon throughout the catalog. All other Albion brand casters feature a (1) year warranty from date of purchase. Visit [albioncasters.com/warranty](http://albioncasters.com/warranty) for official warranty details.



# Albion Product Numbering System

Below are helpful examples of Casters, Wheels, and Rig part numbers and what the respective numbering system and codes represents in each.

## Casters

16PD06201S is a 16 Series 6" x 2" swivel top plate caster with Polyurethane/Aluminum core wheel and straight roller bearing. See below for caster number breakdown.

|                                     |  |                                    |   |   |   |
|-------------------------------------|--|------------------------------------|---|---|---|
| <b>16</b>                           | <b>PD</b>  | <b>06</b>                          | <b>2</b>  | <b>01</b>   | <b>S</b>  |
| <b>Caster Series</b><br>(16 Series) | <b>Wheel Code</b><br>(PD is Polyurethane on aluminum core) (see Wheel Section for codes, page 147 – 193) | <b>Diameter Code</b><br>(06 is 6") | <b>Tread Width Code</b><br>(2 is 2")<br>0: Less than 1-1/2<br>1: 1-1/2 to 1-5/8<br>2: 1-3/4 to 2<br>3: 2-1/8 to 2-7/16<br>4: 2-1/2 to 2-3/4<br>5: 2.8 to 3-3/8<br>6: 3-1/2 to 3-7/8<br>7: 4 to 4-7/8<br>8: 5 to 5-1/2<br>9: Over 5-1/2<br>X: 3-1/2 Dia. Wheel | <b>Bearing Code</b><br>(01 is Straight Roller Bearing) (see Bearing Section for codes, page 13) | <b>Swivel/Rigid Code</b><br>(S is swivel, R is rigid) |

### OPTIONAL FEATURES

To be listed under the caster model number when ordering.  
Note: Some brake and swivel lock options are now placed at the end of the part number. Please see individual series for option designation.

|   |   |
|---|---|
| <b>CB</b>                                     | <b>16</b>   |
| <b>Option Code</b><br>(CB is cam style brake) | <b>Option Code</b><br>(In this case cam style brake for 16 series caster) |

## Wheels

PD0620112 is a 6" x 2" Polyurethane/Aluminum core with 3/4" straight roller bearing.

|  |                                    |  |   |   |
|--|------------------------------------|--|---|---|
| <b>PD</b>  | <b>06</b>                          | <b>2</b>   | <b>01</b>   | <b>12</b>   |
| <b>Wheel Code</b><br>(PD is Polyurethane on aluminum core) (see Wheel Section for codes, page 147 – 193) | <b>Diameter Code</b><br>(06 is 6") | <b>Tread Width Code</b><br>(2 is 2")<br>0: Less than 1-1/2<br>1: 1-1/2 to 1-5/8<br>X: 1-1/4" tread width for 3-1/2" Dia. Wheels<br>2: 1-3/4 to 2<br>3: 2-1/8 to 2-7/16<br>4: 2-1/2 to 2-3/4<br>5: 2.8 to 3-3/8<br>6: 3-1/2 to 3-7/8<br>7: 4 to 4-7/8<br>8: 5 to 5-1/2<br>9: Over 5-1/2 | <b>Bearing Code</b><br>(01 is Straight Roller Bearing) (see Bearing Section for codes, page 13)<br><br>Note: for wheel less bearing order 41 or 00 depending on wheel. See wheel section pages 147-193) | <b>Bearing ID Code</b><br>(12 is 3/4")<br>Bearing I.D. for wheels with bearing. Wheel bore I.D. for wheels less bearing. In 1/16" increments, for example: 12 divided by 16 or 3/4"<br><br>Common Bore Sizes:<br>19 = 1-3/16<br>31 = 1-15/16<br>39 = 2-7/16 |

## Rigs

16YA06201S is a Medium-heavy duty swivel rig that would accommodate the above 6" x 2" PD wheel.

|                                     |  |                                    |   |  |   |
|-------------------------------------|--|------------------------------------|---|--|---|
| <b>16</b>                           | <b>YA</b>  | <b>06</b>                          | <b>2</b>  | <b>01</b>  | <b>S</b>  |
| <b>Caster Series</b><br>(16 Series) | <b>Rig Code</b><br>(YA is rig only designation)<br>YA: Standard<br>YB: Moldon Lead<br>YJ: Ball Load<br>YN: Semi-Pneumatic<br>YO: Full Pneumatic (Note: not all options included) | <b>Diameter Code</b><br>(06 is 6") | <b>Inside Leg Spacing Code</b><br>(2 means that rig fits 1-3/4" to 2" tread width wheel)<br><br>See <b>Tread Width Code</b> in <b>WHEELS</b> above. | <b>Axle/Nut Code</b><br>(01 indicates Stripped rig, no parts)<br>00: Rig comes with axle, nut, spanner and thrust washers<br>03: Complete with axle and nut. | <b>Swivel/Rigid Code</b><br>(S is swivel, R is rigid) |

>> **Product Pages**  
Up Next >>

NOTE: We work hard to ensure all specifications and part numbers are accurately represented throughout our catalog, however catalog specifications are subject to change without notice. Please feel free to contact us to request a drawing, sample (minimums may apply) or to confirm any specification detail prior to ordering.