

# HEAVY DUTY KINGPIN CASTERS

## CAPACITY RANGE 700-17000 LBS



**95 Series**  
Heavy Duty Casters

### Common Applications:

- Production Racks
- Utility Trucks
- Conveyor-drawn Tow-trucks
- Production Dollies
- Heavy Duty Bakery Racks
- Heavy Duty Trash Dumpsters
- Trailer Frames



**81 Series** Heavy Duty Casters  
Capacity to 2000 ..... **60-61**



**94 BBL Series** Super Duty Casters (Ball Load Swivel)  
Capacity to 5000 ..... **68-69**



**90 Series** Heavy Duty Casters  
Capacity to 3500 ..... **62-63**  
**Popular Series**



**94 TRL Series** Super Duty Casters (Thrust Swivel Section)  
Capacity to 10000 ..... **70-71**



**92 Series** Heavy Duty Casters  
Capacity to 4800 ..... **64-65**



**95 BBL Series** Super Duty Casters (Ball Load Swivel)  
Capacity to 8000 ..... **72**  
**Popular Series**



**93 Series** Heavy Duty Casters  
Capacity to 7500 ..... **66**



**95 TRL Series** Super Duty Casters (Thrust Swivel Section)  
Capacity to 17000 ..... **73-74**  
**Popular Series**

### Premium and Specialty Heavy Duty Casters That May Interest You ...

#### KINGPINLESS CASTERS



Need more protection from Shock or Impact? See the **Heavy Duty Kingpinless Section** (pages 41-58).

#### SPRING LOADED CASTERS



Want more shock absorption and a quieter ride? See the **Spring Loaded Section** (pages 87-89).

# 81

## 81 Heavy Duty Casters

CAPACITY TO 2000



Premium Quality



Environmentally Friendly

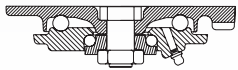


The 81 Series is drop forged and recommended for heavy manual moved loads or for medium duty power drawn equipment. Consult factory for all power drawn applications.

### TYPICAL APPLICATIONS

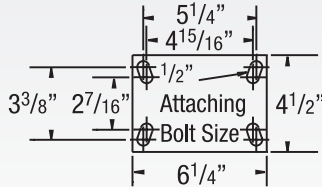
- Conveyor-drawn tow-trucks
- Heavy duty bakery racks
- Production dollies
- Heavy duty dough troughs

### SWIVEL CROSS SECTION



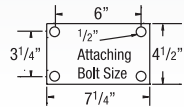
### MOUNTING OPTIONS

#### Standard Plate

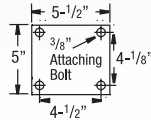


#### Special Order Plates

##### Optional W Plate



##### Optional D Plate



### FEATURES

- **Top Plate:** Rugged AISI 1045 Drop forged steel for maximum strength
- **Swivel Section:** Double ball bearing coined "deep-groove" load and machined component thrust raceways
- **Legs:** 3/8" steel, engineered to increase strength and welded construction
- **King Bolt:** 3/4" diameter heat treated bolt and nut for enhanced load capacity
- **Axle:** 3/4" diameter, hollow, with lock nut
- **Lubrication:** Zerk fitting in swivel section and in recessed head of hollow axle
- Alternate or custom caster configurations available

### RIG OPTIONS

- Neoprene **Sealed swivel** section specify **NS81**
- **Tapered thrust bearing** option available for special order. Consult factory

### BRAKE OPTIONS

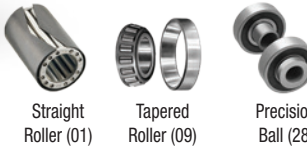
To order, add brake code below to end of model. Example: 81PY06401SP

#### Poly Cam specify **P**



**Single Side** specify **SSB81**. **Double Sided** specify **DSB81**

### BEARING OPTIONS



Straight Roller (01)

Tapered Roller (09)

Precision Ball (28)

#### Face Contact specify **F**



**Wrap Around** specify **WB81**

### TOE GUARD



Specify **TOE** for caster integrated toe guard. Standard model toe guards are 1/2" from the floor. Consult factory for field installable options.

#### Face specify **FBB**



**Welded Swivel Lock** specify **L**

**Hand Operated Detachable Swivel Lock** order **SL81000** separately



+ For swivel models add "S", for rigid model add "R" to end of base caster number.

Wheel Diameter (Inches)	Tread Width (Inches)	Capacity (Lbs) (Based on manual operation)	Overall Height (Inches)	Swivel Lead (Inches)	Approx. Wt. (Lbs)	Base Caster Number+
-------------------------	----------------------	---	-------------------------	----------------------	-------------------	---------------------

### Moldon Rubber on Cast Iron (01 Roller Bearing)

MR	Wheel Diameter (Inches)	Tread Width (Inches)	Capacity (Lbs)	Overall Height (Inches)	Swivel Lead (Inches)	Approx. Wt. (Lbs)	Base Caster Number+
	6	2 1/2	700	7 5/8	3	20 1/2	81MR06401
	6	3	750	7 5/8	3	21 3/4	81MR06501
	8	2 1/2	850	10 1/8	3	20 1/4	81MR08401
	8	3	900	10 1/8	3	22 1/4	81MR08501
	10	2 1/2	950	11 1/2	3 1/2	24 1/2	81MR10401
	10	3	1000	11 1/2	3 1/2	25 1/4	81MR10501
	12	3	1200	13 1/2	3	30 3/4	81MR12501

### Polyurethane on Aluminum (01 Roller Bearing)

PA/PD	Wheel Diameter (Inches)	Tread Width (Inches)	Capacity (Lbs)	Overall Height (Inches)	Swivel Lead (Inches)	Approx. Wt. (Lbs)	Base Caster Number+
	4	3 1/4	1200	5 1/2	2	15	81PA04501
	8	2 1/2	2000	10 1/8	2 1/4	20 1/4	81PD08401
	8	3	2000	10 1/8	2 1/4	20 1/4	81PD08501
	10	2 1/2	2000	11 1/2	2 1/2	24 1/2	81PD10401
	10	3	2000	11 1/2	2 1/2	24 1/2	81PD10501
	12	3	2000	13 1/2	3		81PD12501

+ For swivel models add "S", for rigid model add "R" to end of base caster number.

Wheel Diameter (Inches)	Tread Width (Inches)	Capacity (Lbs) (Based on manual operation)	Overall Height (Inches)	Swivel Lead (Inches)	Approx. Wt. (Lbs)	Base Caster Number+
-------------------------	----------------------	---	-------------------------	----------------------	-------------------	---------------------

### Polyurethane on Cast Iron (01 Roller Bearing)

PY	Wheel Diameter (Inches)	Tread Width (Inches)	Capacity (Lbs)	Overall Height (Inches)	Swivel Lead (Inches)	Approx. Wt. (Lbs)	Base Caster Number+
	3 1/4	3 1/4	850	5 1/8	2	12	81PY03501
	5	2 1/2	1300	6 1/2	2 1/4	15	81PY05401
	6	2 1/2	1600	7 5/8	1 1/2	20 1/2	81PY06401
	6	3	2000	7 5/8	1 1/2	26	81PY06501
	8	2 1/2	2000	10 1/8	2 1/4	22 1/2	81PY08401
	8	3	2000	10 1/8	2 1/4	22 1/4	81PY08501
	10	3	2000	11 1/2	2 1/2	31	81PY10501
	12	2 1/2	2000	13 1/2	3	31 1/2	81PY12401
	12	3	2000	13 1/2	3	40	81PY12501

Continue on next page >>

+ For swivel models add "S", for rigid model add "R" to end of base caster number.

Wheel Diameter (Inches)  
 Tread Width (Inches)  
 Capacity (Lbs) (Rigid or normal operation)  
 Overall Height (Inches)  
 Swivel Lead (Inches)  
 Approx. Wk. (Lbs)  
 Base Caster Number+

Polyurethane on Cast Iron (01 Roller Bearing)								
	<b>PY 80A</b>	3 1/4	3 1/4	680	5 1/8	2	12	81PY0350180A
		5	2 1/2	1050	6 1/2	2 1/4	15	81PY0540180A
		6	2 1/2	1300	7 5/8	1 1/2	20 1/2	81PY0640180A
		6	3	1600	7 5/8	1 1/2	26	81PY0650180A
		8	2 1/2	1600	10 1/8	2 1/4	22 1/2	81PY0840180A
		8	3	2000	10 1/8	2 1/4	22 1/4	81PY0850180A
		10	3	2000	11 1/2	2 1/2	31	81PY1050180A
		12	2 1/2	2000	13 1/2	3	31 1/2	81PY1240180A
		12	3	2000	13 1/2	3	40	81PY1250180A

To Specify Rigid or Swivel, insert "R" or "S" before "80A".  
Example: 81PY08228R80A.

Polyurethane on Iron (01 Roller Bearing)								
	<b>PI</b>	6	2 1/2	1600	7 5/8	1 1/2	20 1/2	81PI06401
		6	3	2000	7 5/8	1 1/2	26	81PI06501
		8	2 1/2	2000	10 1/8	2 1/4	22 1/2	81PI08401
		8	3	2000	10 1/8	2 1/4	22 1/4	81PI08501
		10	3	2000	11 1/2	2 1/2	31	81PI10501
		12	2 1/2	2000	13 1/2	3	31 1/2	81PI12401
		12	3	2000	13 1/2	3	40	81PI12501

Thick Tread Polyurethane (01 Roller Bearing)								
	<b>PX</b>	6	3	2000	7 5/8	1 1/2	26	81PX06501
		8	3	2000	10 1/8	2 1/4	22 1/4	81PX08501
		10	3	2000	11 1/2	2 1/2	31	81PX10501
		12	3	2000	13 1/2	3	40	81PX12501

Vulkollan on Cast Iron (09 Tapered Roller Bearing)*								
	<b>VY</b>	6	2 1/2	2000	7 5/8	1 1/2	20 1/2	81VY06409
		6	3	2000	7 5/8	1 1/2	26	81VY06509
		8	2 1/2	2000	10 1/8	2 1/4	22 1/2	81VY08409
		8	3	2000	10 1/8	2 1/4	22 1/4	81VY08509
		10	3	2000	11 1/2	2 1/2	31	81VY10509

\*Roller (01) and Precision Ball (28) Bearings available.  
Change "09" to other bearing code. Roller example: 81VY06501.

Vulkollan Thick Tread Polyurethane (09 Tapered Roller Bearing)*								
	<b>VX</b>	6	3	2000	7 5/8	1 1/2	26	81VX06509
		8	3	2000	10 1/8	2 1/4	22 1/4	81VX08509
		10	3	2000	11 1/2	2 1/2	31	81VX10509

\*Roller (01) and Precision Ball (28) Bearings available.  
Change "09" to other bearing code. Roller example: 81VX06501.

X-treme Plus Solid Polyurethane (01 Roller Bearing)*								
	<b>XP</b>	8	2 1/2	2000	10 1/8	2 1/4	22 1/2	81XP08401
		8	3	2000	10 1/8	2 1/4	22 1/4	81XP08501
		10	2 1/2	2000	11 1/2	2 1/2	24 1/2	81XP10401
		10	3	2000	11 1/2	2 1/2	31	81XP10501

\*Precision Ball (28) Bearings available.  
Change "01" to other bearing code. Example: 81XP08428.

Phenolic (01 Roller Bearing)								
	<b>TM</b>	6	2 1/2	1600	7 5/8	1 1/2	14 1/4	81TM06401
		6	3	2000	7 5/8	1 1/2	14 3/4	81TM06501
		8	2 1/2	2000	10 1/8	2 1/4	16 3/4	81TM08401
		8	3	2000	10 1/8	2 1/4	17 3/4	81TM08501
		10	3	2000	11 1/2	2 1/2	20 1/2	81TM10501
		12	3	2000	13 1/2	3	22 1/2	81TM12501

+ For swivel models add "S", for rigid model add "R" to end of base caster number.

Wheel Diameter (Inches)  
 Tread Width (Inches)  
 Capacity (Lbs) (Rigid or normal operation)  
 Overall Height (Inches)  
 Swivel Lead (Inches)  
 Approx. Wk. (Lbs)  
 Base Caster Number+

Trionix™ High Impact Polymer (28 Precision Ball Bearing)								
	<b>NX</b>	6	2 1/2	2000	7 5/8	1 1/2	15	81NX06428
		6	3	2000	7 5/8	1 1/2	16	81NX06528
		8	2 1/2	2000	10 1/8	2 1/4	17	81NX08428
		8	3	2000	10 1/8	2 1/4	18	81NX08528
		10	2 1/2	2000	11 1/2	3 1/2	19 3/4	81NX10428
		10	3	2000	11 1/2	2 1/2	21	81NX10528

Cast Iron (01 Roller Bearing)								
	<b>CA</b>	4	3	2000	5 1/2	2	17 3/4	81CA04501
		5	2 1/2	2000	6 1/2	2 1/4	19 1/2	81CA05401
		6	2 1/2	2000	7 5/8	1 1/2	20 1/4	81CA06401
		8	3	2000	10 1/8	2 1/4	26 1/2	81CA08501
		10	3	2000	11 1/2	2 1/2	27 1/2	81CA10501

Drop Forged Steel (01 Roller Bearing)								
	<b>FS</b>	6	2 1/2	2000	7 5/8	1 1/2	21 3/4	81FS06401
		8	3	2000	10 1/8	2 1/4	26 1/2	81FS08501

V-Grooved Cast Iron (01 Roller Bearing)								
	<b>VG</b>	6	2 1/2	2000	7 5/8	1 1/2	20 1/4	81VG06401
		8	3	2000	10 1/8	2 1/4	26 1/2	81VG08501
		10	3	2000	11 1/2	2 1/2	27 1/2	81VG10501

Ductile Iron Crowned Tread (01 Roller Bearing)*								
	<b>FR, FM</b>	6	2 1/2	2000	7 5/8	1 1/2	20 1/4	81FR06401
		8	3	2000	10 1/8	2 1/4	26 1/2	81FR08501
		10	3	2000	11 1/2	2 1/2	27 1/2	81FR10501

\*Tapered Roller (09) and Precision Ball (28) bearings available.  
Tapered Roller example: 81FR06409.  
Ductile Iron Flat Tread (FM) and V-Groove (VM) models available.  
Change FR wheel code to FM or VM. Example: 81FM06401.

# 90

## 90 Heavy Duty Casters

CAPACITY TO 3500

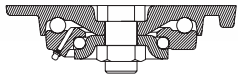


Our popular 90 Series is made from AISI 1045 drop forged steel and is highly recommended for rugged heavy duty applications.

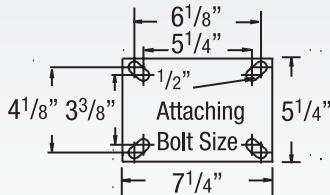
### TYPICAL APPLICATIONS

- Heavy duty power drawn equipment
- High capacity die tables
- Portable work benches
- Machinery dollies
- Heavy production fixtures or jigs
- Corrugated steel box trucks
- Heavy portable storage racks

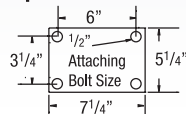
### SWIVEL CROSS SECTION



### MOUNTING OPTIONS Standard Plate



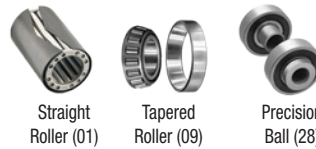
### Special Order Plate Optional W Plate



### FEATURES

- **Swivel Top Plate:** AISI 1045 drop forged steel, for strength and reliability
- **Yoke Base:** AISI 1045 drop forged steel with machined raceway for extended service life
- **Swivel Load Bearing:** 4" diameter deep-grooved load raceway with 1/2" steel balls for better load distribution. The thrust race is 2-5/8" diameter using 3/8" diameter steel balls for increased capacity
- **Legs:** 3/8" steel plate welded inside and out for added strength
- **King Bolt:** 1" diameter bolt heat treated for extended service
- **Axle:** 3/4" and 1" hollow axles are used for wheel bearing lubrication
- **Lubrication:** Zerk fitting in yoke base and in wheel hub or recessed in head of hollow axle
- Alternate or custom caster configurations available

### BEARING OPTIONS



### TOE GUARD



Specify **TOE** for caster integrated toe guard. Standard model toe guards are 1/2" from the floor. Consult factory for field installable options.

### RIG OPTIONS

- **Sealed swivel** section specify **NS90**
- **Heat treated raceway** specify **HT03**
- **Tapered thrust bearing** option available for special order. Consult factory

### BRAKE OPTIONS

To order, add brake code below to end of model. Example: 90PY06401SP

**Poly Cam**  
specify **P**



**Single Side** specify **SSB90**. **Double Sided** specify **DSB90**

**Face Contact**  
specify **F**



**Wrap Around**  
specify **WB90**

**PLB Integrated**  
specify **PLB**



**Face**  
specify **FBB** (3" tread width only)

**Welded Swivel Lock**  
specify **L**



**Hand operated field Installable Swivel Lock**  
order **SL900000** separately

	Wheel Diameter (Inches)	Tread Width (Inches)	Capacity (Lbs) (Rated for normal operation)	Overall Height (Inches)	Swivel Lead (Inches)	Approx. Wt. (Lbs)	Base Caster Number+
--	-------------------------	----------------------	--	-------------------------	----------------------	-------------------	---------------------

### Moldon Rubber on Cast Iron (01 Roller Bearing)\*

MR	Wheel Diameter (Inches)	Tread Width (Inches)	Capacity (Lbs) (Rated for normal operation)	Overall Height (Inches)	Swivel Lead (Inches)	Approx. Wt. (Lbs)	Base Caster Number+
6	2 1/2	700	8	2 1/4	22	90MR06401	
6	3	750	8	2 1/4	23 3/4	90MR06501	
8	2 1/2	850	10 1/2	2 1/2	27 1/4	90MR08401	
8	3	900	10 1/2	2 1/2	27 1/4	90MR08501	
10	2 1/2	950	12 1/2	2 1/2	29 1/2	90MR10401	
10	3	1000	12 1/2	2 1/2	30 1/2	90MR10501	
10	3 1/2	1800	12 1/2	2 1/2	30 1/2	90MH10501	
10	4 2	1400	12 1/2	2 1/2	44 1/2	90MR10701	
12	2 1/2	2500	15 1/2	2 1/2	35	90MR12401	
12	3	1200	15 1/2	2 1/2	36 1/4	90MR12501	

\* (09) Tapered Roller Bearings available.  
Change "01" to other bearing code. Tapered Roller example: 90MR06509.  
<sup>1</sup>Heavy-duty MH version of 10x3 wheel.  
<sup>2</sup>10 x 4 model has solid axle; all others hollow axle.

+ For swivel models add "S", for rigid model add "R" to end of base caster number.

### Polyurethane on Aluminum (01 Roller Bearing)

PA/PD	Wheel Diameter (Inches)	Tread Width (Inches)	Capacity (Lbs) (Rated for normal operation)	Overall Height (Inches)	Swivel Lead (Inches)	Approx. Wt. (Lbs)	Base Caster Number+
4	3 1/4	1200	6	2	17 1/4	90PA04501	
4	4	1600	6	2	20 1/2	90PA04701*	
8	2 1/2	2010	10 1/2	2 1/2	21 1/2	90PD08401	
8	3	2520	10 1/2	2 1/2	22 1/2	90PD08501	
10	2 1/2	2370	12 1/2	2 1/2	24	90PD10401	
10	3	3000	12 1/2	2 1/2	25	90PD10501	

\*1" solid axle.

Continue on next page >>



# 92

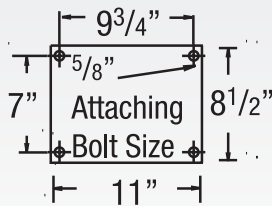
## 92 Heavy Duty Casters

CAPACITY TO 4800



92 Series Casters are designed specifically for power drawn trailers. These casters allow for ease of operation even on poor floor or surface conditions.

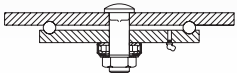
### MOUNTING OPTION



### TYPICAL APPLICATIONS

- Heavy duty trash dumpsters
- Trailer frames
- Automotive plants

### SWIVEL CROSS SECTION



Premium Quality



Towing<sup>^</sup>



Environmentally Friendly

### FEATURES

- **Top Plate and Yoke Base:** 5/8" thick 1045 AISI steel plate for superior strength
- **Swivel Raceways:** 7" diameter precision machined load raceway with 5/8" steel and tapered roller thrust bearing for easy swiveling
- **King Bolt:** 1" diameter bolt and nut heat treated for added strength
- **Legs:** 3/8" x 4" formed steel plate welded inside and out for maximum load capacity
- **Lubrication:** Zerk fitting in swivel section and wheel hub for ease of lubrication
- **Axle:** 3/4" hollow axle with recessed zerk for lubrication
- Alternate or custom caster configurations available

### RIG OPTIONS

- **Flush King Bolt** specify **KB03**

### BRAKE OPTIONS

To order, add brake code below to end of model. Example: 92PY08501SP

**Poly Cam**  
specify **P**



**Single Side** specify **SSB92**. **Double Sided** specify **DSB92**

**Face Contact**  
specify **F**



### BEARING OPTIONS



Straight Roller (01)



Tapered Roller (09)



Precision Ball (28)



**Wrap Around**  
specify **WB92**

**Welded Swivel Lock**  
specify **L**



Hand operated field installable **Swivel Lock** order **SL920000** separately (Yokes must be notched)

	Wheel Diameter (Inches)	Tread Width (Inches)	Capacity (Lbs) (Based on manual operation)	Overall Height (Inches)	Swivel Lead (Inches)	Approx. Wt. (Lbs)	Base Caster Number <sup>+</sup>
<b>Moldon Rubber on Cast Iron (01 Roller Bearing)</b>							
<b>MR</b>	8	3	900	11	3	48	<b>92MR08501</b>
	10	3	1000	12 <sup>7/8</sup>	3	50 <sup>1/2</sup>	<b>92MR10501</b>
	10	4*	1400	12 <sup>7/8</sup>	3 <sup>1/2</sup>	63 <sup>3/4</sup>	<b>92MR10701</b>
	12	3	1200	14 <sup>7/8</sup>	3 <sup>1/2</sup>	56 <sup>1/4</sup>	<b>92MR12501</b>
	12	3 <sup>1/2</sup> *	1500	14 <sup>7/8</sup>	4	63	<b>92MR12601</b>
	12	4*	1600	14 <sup>7/8</sup>	4	68 <sup>1/2</sup>	<b>92MR12701</b>

\*3-1/2" and 4" tread width model has solid axle, all others hollow axle.

	Wheel Diameter (Inches)	Tread Width (Inches)	Capacity (Lbs) (Based on manual operation)	Overall Height (Inches)	Swivel Lead (Inches)	Approx. Wt. (Lbs)	Base Caster Number <sup>+</sup>
<b>Polyurethane on Cast Iron (01 Roller Bearing)</b>							
<b>PY</b>	8	3	2500	11	3	52 <sup>1/2</sup>	<b>92PY08501</b>
	10	3	3000	12 <sup>7/8</sup>	3	56 <sup>1/2</sup>	<b>92PY10501</b>
	10	4*	4200	12 <sup>7/8</sup>	3 <sup>1/2</sup>	67 <sup>3/4</sup>	<b>92PY10701</b>
	12	3	3500	14 <sup>7/8</sup>	3 <sup>1/2</sup>	65	<b>92PY12501</b>
	12	3 <sup>1/2</sup> *	4110	14 <sup>7/8</sup>	3 <sup>1/2</sup>	68 <sup>3/4</sup>	<b>92PY12601</b>
	12	4*	4800	14 <sup>7/8</sup>	3 <sup>1/2</sup>	71 <sup>1/2</sup>	<b>92PY12701</b>

\*3-1/2" and 4" tread width model has solid axle, all others hollow axle.

	Wheel Diameter (Inches)	Tread Width (Inches)	Capacity (Lbs) (Based on manual operation)	Overall Height (Inches)	Swivel Lead (Inches)	Approx. Wt. (Lbs)	Base Caster Number <sup>+</sup>
<b>Polyurethane on Cast Iron (01 Roller Bearing)</b>							
<b>PY 80A</b>	8	3	2000	11	3	52 <sup>1/2</sup>	<b>92PY0850180A</b>
	10	3	2400	12 <sup>7/8</sup>	3	56 <sup>1/2</sup>	<b>92PY1050180A</b>
	10	4*	3350	12 <sup>7/8</sup>	3 <sup>1/2</sup>	67 <sup>3/4</sup>	<b>92PY1070180A</b>
	12	3	2800	14 <sup>7/8</sup>	3 <sup>1/2</sup>	65	<b>92PY1250180A</b>
	12	3 <sup>1/2</sup> *	3280	14 <sup>7/8</sup>	3 <sup>1/2</sup>	68 <sup>3/4</sup>	<b>92PY1260180A</b>
	12	4*	3840	14 <sup>7/8</sup>	3 <sup>1/2</sup>	71 <sup>1/2</sup>	<b>92PY1270180A</b>

To Specify Rigid or Swivel, insert "R" or "S" before "80A". Example: 92PY08501R80A.

\*3-1/2" and 4" tread width model has solid axle, all others hollow axle.

	Wheel Diameter (Inches)	Tread Width (Inches)	Capacity (Lbs) (Based on manual operation)	Overall Height (Inches)	Swivel Lead (Inches)	Approx. Wt. (Lbs)	Base Caster Number <sup>+</sup>
<b>Vulkollan on Cast Iron (09 Tapered Roller Bearing)*</b>							
<b>VY</b>	8	3	4000	11	3	52 <sup>1/2</sup>	<b>92VY08509</b>
	10	3	4800	12 <sup>7/8</sup>	3	56 <sup>1/2</sup>	<b>92VY10509</b>
	12	3	4800	14 <sup>7/8</sup>	3 <sup>1/2</sup>	65	<b>92VY12509</b>

\* Roller (01) and Precision Ball (28) bearings available. Change "09" to other bearing code. Roller example: 92VY08501

Continue on next page >>

+ For swivel models add "S", for rigid model add "R" to end of base caster number.

Wheel Diameter (Inches)	Tread Width (Inches)	Capacity (Lbs) (Based on manual operation)	Overall Height (Inches)	Swivel Lead (Inches)	Approx. Wt. (Lbs)	Base Caster Number+

X-treme Plus Solid Polyurethane (28 Precision Ball Bearing)							
XP	8	3	2000	11	3	45	92XP08528
	10	3	2500	12 <sup>7</sup> / <sub>8</sub>	3	48	92XP10528



Polyurethane on Cast Iron (09 Tapered Roller Bearing)*							
PI	8	3	2500	11	2 <sup>1</sup> / <sub>2</sub>	43 <sup>3</sup> / <sub>4</sub>	92PI08509
	10	3	3000	12 <sup>7</sup> / <sub>8</sub>	2 <sup>1</sup> / <sub>2</sub>	49 <sup>1</sup> / <sub>2</sub>	92PI10509
	12	3	3500	14 <sup>7</sup> / <sub>8</sub>	2 <sup>1</sup> / <sub>2</sub>	60 <sup>1</sup> / <sub>2</sub>	92PI12509



\*Roller (01) bearings available. Change "01" to other bearing code. Example: 92PI06501.

Phenolic (01 Roller Bearing)							
TM	8	3	2500	11	3	43 <sup>1</sup> / <sub>4</sub>	92TM08501
	10	3	2900	12 <sup>7</sup> / <sub>8</sub>	3	46 <sup>1</sup> / <sub>4</sub>	92TM10501
	12	3	3500	14 <sup>7</sup> / <sub>8</sub>	3 <sup>1</sup> / <sub>2</sub>	49 <sup>3</sup> / <sub>4</sub>	92TM12501
	12	3 <sup>1</sup> / <sub>2</sub> *	4000	14 <sup>7</sup> / <sub>8</sub>	3 <sup>1</sup> / <sub>2</sub>	62	92TM12601



\*3-1/2" and 4" tread width model has solid axle, all others hollow axle.

Trionix™ High Impact Polymer (28 Precision Ball Bearing)							
NX	8	3	4800	11	3	43 <sup>1</sup> / <sub>4</sub>	92NX08528
	10	3	4800	12 <sup>7</sup> / <sub>8</sub>	3	46	92NX10528



Cast Iron (01 Roller Bearing)*							
CA	8	3	2800	11	3	48 <sup>1</sup> / <sub>4</sub>	92CA08501
	10	3	2800	12 <sup>7</sup> / <sub>8</sub>	3	53 <sup>1</sup> / <sub>4</sub>	92CA10501
	12	3	2800	14 <sup>7</sup> / <sub>8</sub>	3 <sup>1</sup> / <sub>2</sub>	59	92CA12501
	12	3 <sup>1</sup> / <sub>2</sub> **	4000	14 <sup>7</sup> / <sub>8</sub>	3 <sup>1</sup> / <sub>2</sub>	74	92CA12601



\*Tapered Roller (09) bearings available. Change "01" to other bearing code. Example: 92CA08509.

\*\*3-1/2" and 4" tread width model has solid axle, all others hollow axle.

+ For swivel models add "S", for rigid model add "R" to end of base caster number.

Wheel Diameter (Inches)	Tread Width (Inches)	Capacity (Lbs) (Based on manual operation)	Overall Height (Inches)	Swivel Lead (Inches)	Approx. Wt. (Lbs)	Base Caster Number+

Drop Forged Steel (01 Roller Bearing)*							
FS	8	3	4000	11	3	54 <sup>3</sup> / <sub>4</sub>	92FS08501
	10	3	4800	12 <sup>7</sup> / <sub>8</sub>	3	64 <sup>1</sup> / <sub>4</sub>	92FS10501



\* (09) Tapered Roller Bearings available. Change "01" to other bearing code. Example: 92FS08509.

V-grooved Cast Iron (01 Roller Bearing)							
VG	8	3	2500	11	3	53	92VG08501
	10	3	3000	12 <sup>7</sup> / <sub>8</sub>	3	64	92VG10501



Ductile Iron Crowned Tread (01 Roller Bearing)*							
FR	8	3	3500	11	3	49	92FR08501
	10	3	3500	12 <sup>7</sup> / <sub>8</sub>	3	55	92FR10501



\*Tapered Roller (09) bearing available. Change "01" to other bearing code. Example: 92FR08509.

Ductile Iron Flat Tread (01 Roller Bearing)*							
FM	8	3	3500	11	3	49	92FM08501
	10	3	3500	12 <sup>7</sup> / <sub>8</sub>	3	55	92FM10501



\*Tapered Roller (09) bearing available. Change "01" to other bearing code. Example: 92FM08509.

Ductile Iron V-Groove Tread (01 Roller Bearing)*							
VM	8	3	3500	11	3	49	92VM08501
	10	3	3500	12 <sup>7</sup> / <sub>8</sub>	3	55	92VM10501



\*Tapered Roller (09) bearing available. Change "01" to other bearing code. Example: 92VM08509.

## CUSTOM FABRICATION

This is not a one-size-fits-all business. In fact, many of our orders require custom fabrication.

If you can't find the right caster for your special application, put the Albion engineering team to work. We will create the perfect solution for your moving problem.



See pages 16-17

# 93

## 93 Heavy Duty Casters

CAPACITY TO 7500

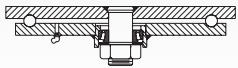


This caster is constructed from 5/8" thick AISI 1045 steel for those rugged applications. Design accommodates wider wheels for ease of use.

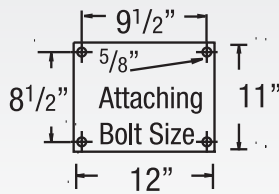
### TYPICAL APPLICATIONS

- Die carts
- Towed trailers
- Workstation
- Aircraft assembly

### SWIVEL CROSS SECTION



### MOUNTING OPTION



Premium Quality



Towing<sup>^</sup>



Environmentally Friendly

### FEATURES

- **Top Plate and Yoke Base:** 5/8" thick 1045 AISI steel plate for superior strength
- **Swivel Raceways:** 7" diameter precision machined load raceway with 5/8" steel balls and a tapered roller thrust bearing for easy swiveling
- **King Bolt:** 1-1/4" diameter bolt and nut heat treated for added strength
- **Legs:** 1/2" formed steel plate welded inside and out for maximum load capacity
- **Lubrication:** Zerk fitting in swivel section and wheel hub for ease of lubrication
- **Axle:** 1-1/4" solid axle
- Alternate or custom caster configurations available

### BRAKE OPTIONS

To order, add brake code below to end of model. Example: 93PY12609SP

**Poly Cam**  
specify **P**



**Face Contact**  
specify **F**

**Welded Swivel Lock**  
specify **L**



### BEARING OPTIONS



Straight  
Roller (01)



Tapered  
Roller (09)

+ For swivel models add "S", for rigid model add "R" to end of base caster number.

Wheel Diameter (Inches)	Tread Width (Inches)	Capacity (Lbs) (Roller or manual operation)	Overall Height (Inches)	Swivel Lead (Inches)	Approx. Wt. (Lbs)	Base Caster Number+
-------------------------	----------------------	---	-------------------------	----------------------	-------------------	---------------------

### Vulkollan on Cast Iron (09 Tapered Roller Bearing)

Model	Wheel Diameter	Tread Width	Capacity	Overall Height	Swivel Lead	Approx. Wt.	Base Caster Number
VY	12	3 1/2	5300	15 3/4	4 1/2	93 1/2	93VY12609
	12	4	6925	15 3/4	4 1/2	96	93VY12709



### Phenolic (09 Tapered Roller Bearing)

Model	Wheel Diameter	Tread Width	Capacity	Overall Height	Swivel Lead	Approx. Wt.	Base Caster Number
TM	12	3 1/2	4000	15 3/4	4 1/2	79 1/2	93TM12609
	16	3	4000	19	4 1/2	89	93TM16509
	16	4	7500	19	4 1/2	100	93TM16709



### Laminated Phenolic (09 Tapered Roller Bearing)

Model	Wheel Diameter	Tread Width	Capacity	Overall Height	Swivel Lead	Approx. Wt.	Base Caster Number
TL	12	3 1/2	4000	15 3/4	4 1/2	86 1/2	93TL12609
	16	3	4000	19	4 1/2	88 3/4	93TL16509
	16	4	7500	19	4 1/2	99 1/2	93TL16709



### Cast Iron (09 Tapered Roller Bearing)

Model	Wheel Diameter	Tread Width	Capacity	Overall Height	Swivel Lead	Approx. Wt.	Base Caster Number
CA	12	3 1/2	4000	15 3/4	4 1/2	98 1/2	93CA12609
	16	4	5300	19	4 1/2	129 3/4	93CA16709



### Ductile Iron (01 Roller Bearing)

Model	Wheel Diameter	Tread Width	Capacity	Overall Height	Swivel Lead	Approx. Wt.	Base Caster Number
FM	12	3 1/2	6000	15 3/4	4 1/2	103 1/2	93FM12601



+ For swivel models add "S", for rigid model add "R" to end of base caster number.

Wheel Diameter (Inches)	Tread Width (Inches)	Capacity (Lbs) (Roller or manual operation)	Overall Height (Inches)	Swivel Lead (Inches)	Approx. Wt. (Lbs)	Base Caster Number+
-------------------------	----------------------	---	-------------------------	----------------------	-------------------	---------------------

### Moldon Rubber on Cast Iron (09 Tapered Roller Bearing)

Model	Wheel Diameter	Tread Width	Capacity	Overall Height	Swivel Lead	Approx. Wt.	Base Caster Number
MR	12	4	1600	15 3/4	4 1/2	92 1/2	93MR12709
	16	4	2000	19	4 1/2	111 3/4	93MR16709
	16	5	2570	19	4 1/2	125	93MR16809
	18	5	2800	21	4 1/2	149	93MR18809



### Polyurethane on Cast Iron (09 Tapered Roller Bearing)

Model	Wheel Diameter	Tread Width	Capacity	Overall Height	Swivel Lead	Approx. Wt.	Base Caster Number
PY	12	3 1/2	4110	15 3/4	4 1/2	93 1/2	93PY12609
	12	4	4800	15 3/4	4 1/2	96	93PY12709
	16	3	4260	19	4 1/2	116 3/4	93PY16509
	16	4	5970	19	4 1/2	131 1/4	93PY16709
	16	5	7500	19	4 1/2	145 3/4	93PY16809
	18	5	7500	21	4 1/2	152	93PY18809



### Thick Tread Polyurethane (09 Tapered Roller Bearing)

Model	Wheel Diameter	Tread Width	Capacity	Overall Height	Swivel Lead	Approx. Wt.	Base Caster Number
PX	12	4	5280	15 3/4	4 1/2	100	93PX12709
	16	3	4680	19	4 1/2	119	93PX16509
	16	4	6570	19	4 1/2	134	93PX16709
	16	5	7500	19	4 1/2	149	93PX16809



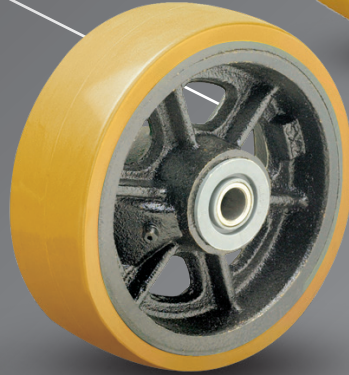


Looking for a **Heavy Duty Wheel**

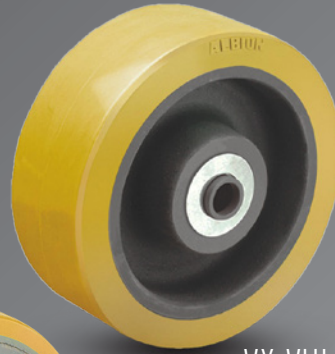
that also **PROTECTS  
YOUR FLOOR?**



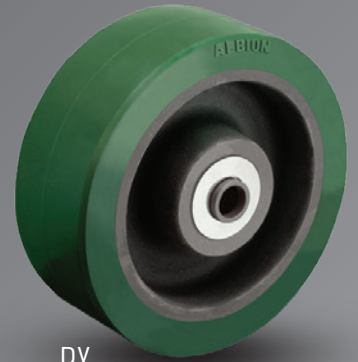
**NX**  
UP TO 7200 LB CAPACITY



**VY VULKOLLAN®**  
UP TO 6925 LB CAPACITY



**VX VULKOLLAN®**  
UP TO 5000 LB CAPACITY



**PX**  
UP TO 7700 LB CAPACITY

# HEAVY DUTY WHEELS BY ALBION®

## VY/VX VULKOLLAN®

UP TO 6925 LB CAPACITY



Highest quality polyurethane in the world. Vulkollan® wheels offer superior tear resistance, rebound resilience, dynamic load capacity, reliability, wear resistance, and structural strength. Wheels may last 40% longer than most polyurethane wheels, especially in extreme conditions.

### Features:

- Hardness: 95 Shore A
- Wheel Face: Flat tread
- Finish: Orange/brown tread on cast iron core with clear coat
- Temperature Range: -40°F to +180°F

## NX

UP TO 7200 LB CAPACITY



Reinforced polymer, straight sided, and higher capacity. Wheels are machined, not injection molded.

### Features:

- Hardness: 78-82 Shore D
- Wheel Face: Slight radius
- Finish: Black
- Temperature Range: -30°F to +200°F

## PX

UP TO 7700 LB CAPACITY



Polyurethane tread is chemically bonded to a cast iron core. High capacity polyurethane protects floors, is non-marking, and delivers quieter operations than standard metal wheels.

### Features:

- Hardness: 95 Shore A
- Wheel Face: Flat or crown tread
- Finish: Green tread on black core
- Temperature Range: -40°F up to +180°F

# 94

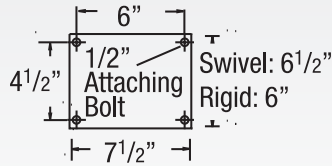
## 94 BBL Super Duty Casters (Ball Load Swivel)

CAPACITY TO 5000

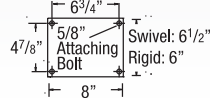


This caster has a ball load swivel (ball load swivel = "BBL") and is precision machined and heat treated to provide long life with greater capacity for that very rugged application. Made from AISI 1045 forged steel.

### MOUNTING OPTIONS Standard Plate



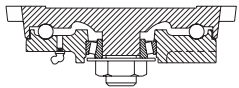
### Special Order Plate Optional C Plate



### TYPICAL APPLICATIONS

- Die carts
- Towed trailers
- Automotive plants
- Aerospace industry
- Work stations
- Steel mills
- Aircraft maintenance

### SWIVEL CROSS SECTION



Premium Quality



Towing<sup>^</sup>



Environmentally Friendly

### FEATURES

- **Top Plate and Yoke Base:** 1/2" thick AISI 1045 drop forged steel
- **Swivel Load:** 5" diameter ball load race with 1/2" steel balls hardened for greater resistance to wear and brinelling. Protected by a forged labyrinth skirt
- **Thrust Race:** 1-1/4" tapered roller bearing
- **Legs:** 3/8" formed steel plate welded inside and out to yoke base and rigid top
- **King Bolt:** 1-1/4" diameter integrally forged with top plate for maximum strength
- **Axle:** 1" solid axle with lock nut
- **Lubrication:** Zerk fitting in yoke base and wheel hubs for easy lubrication
- Alternate or custom caster configurations available

### RIG OPTIONS

- **Sealed swivel** section specify **NS94**

### BRAKE OPTIONS

To order, add brake code below to end of model. Example: 94PY06409SBBLP

**Poly Cam**  
specify **P**



**Single Side** specify **SSB94**. **Double Sided** specify **DSB94**

**Face Contact**  
specify **F**



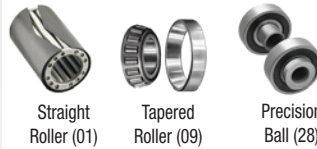
**Wrap Around**  
specify **WB94**

**Welded Swivel Lock**  
specify **L**



Hand operated field installable **Swivel Lock** order **SL940000** separately (Yokes must be notched)

### BEARING OPTIONS

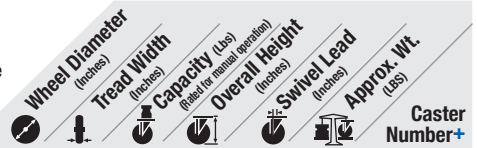


Straight Roller (01)

Tapered Roller (09)

Precision Ball (28)

+ For Rigid models change "SBBL" to "RBBL" to end of base caster number.



+ For Rigid models change "SBBL" to "RBBL" to end of base caster number.

### Moldon Rubber on Cast Iron (09 Tapered Roller Bearing)

MR	Wheel Diameter (Inches)	Tread Width (Inches)	Capacity (Lbs) (Rigid or manual operation)	Overall Height (Inches)	Swivel Lead (Inches)	Approx. Wt. (Lbs)	Caster Number+
	8	3	900	10 1/2	2 1/2	36 3/4	94MR08509SBBL
	10	3	1000	12 1/2	2 1/2	39 3/4	94MR10509SBBL
	10	3*	1800	12 1/2	2 1/2	39 3/4	94MH10509SBBL
	10	4	1400	12 1/2	2 1/2	50 3/4	94MR10709SBBL
	12	3 1/2	1500	15 1/2	2 1/2	55 3/4	94MR12609SBBL
	12	4	1600	15 1/2	2 1/2	63 1/4	94MR12709SBBL

\*Heavy-duty MH version of 10x3 wheel.

### Polyurethane on Cast Iron (09 Tapered Roller Bearing)

PY	Wheel Diameter (Inches)	Tread Width (Inches)	Capacity (Lbs) (Rigid or manual operation)	Overall Height (Inches)	Swivel Lead (Inches)	Approx. Wt. (Lbs)	Caster Number+
	6	2 1/2	1600	8 1/2	2 1/2	36	94PY06409SBBL
	6	3	2000	8 1/2	2 1/2	37 1/4	94PY06509SBBL
	8	3	2500	10 1/2	2 1/2	41	94PY08509SBBL
	8	4	3800	10 1/2	2 1/2	48	94PY08709SBBL
	10	3	3000	12 1/2	2 1/2	45 1/2	94PY10509SBBL
	10	4	4200	12 1/2	2 1/2	55	94PY10709SBBL
	12	3 1/2	4110	15 1/2	2 1/2	57 1/2	94PY12609SBBL
	12	4	4800	15 1/2	2 1/2	60	94PY12709SBBL

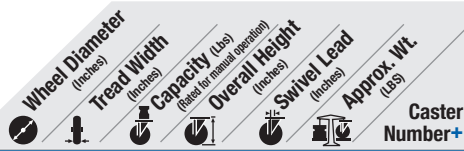
### Polyurethane 80A on Cast Iron (09 Tapered Roller Bearing)

PY 80A	Wheel Diameter (Inches)	Tread Width (Inches)	Capacity (Lbs) (Rigid or manual operation)	Overall Height (Inches)	Swivel Lead (Inches)	Approx. Wt. (Lbs)	Caster Number+
	6	2 1/2	1300	8 1/2	2 1/2	36	94PY06409SBBL80A
	6	3	1600	8 1/2	2 1/2	37 1/4	94PY06509SBBL80A
	8	3	2000	10 1/2	2 1/2	41	94PY08509SBBL80A
	8	4	3000	10 1/2	2 1/2	48	94PY08709SBBL80A
	10	3	2400	12 1/2	2 1/2	45 1/2	94PY10509SBBL80A
	10	4	3350	12 1/2	2 1/2	55	94PY10709SBBL80A
	12	3 1/2	3280	15 1/2	2 1/2	57 1/2	94PY12609SBBL80A
	12	4	3840	15 1/2	2 1/2	60	94PY12709SBBL80A

To Specify Rigid, insert "R" before "80A".

Ex: 94PY06409SBBLR80A.

+ For Rigid models change "SBBL" to "RBBL" to end of base caster number.



**Polyurethane on Cast Iron (09 Tapered Roller Bearing)\***

PI	Wheel Diameter (inches)	Tread Width (inches)	Capacity (lbs) (rated for manual operation)	Overall Height (inches)	Swivel Lead (inches)	Approx. Wt. (lbs)	Caster Number+
	6	2 1/2	1600	8 1/2	2 1/2	34	94PI06409SBBL
	6	3	2000	8 1/2	2 1/2	35 1/2	94PI06509SBBL
	8	2 1/2	2000	10 1/2	2 1/2	34 1/2	94PI08409SBBL
	8	3	2500	10 1/2	2 1/2	35 1/2	94PI08509SBBL
	10	2 1/2	2200	12 1/2	2 1/2	41	94PI10409SBBL
	10	3	3000	12 1/2	2 1/2	42 1/2	94PI10509SBBL
	12	2 1/2	2500	15 1/2	2 1/2	51 1/2	94PI12409SBBL
	12	3	3500	15 1/2	2 1/2	53	94PI12509SBBL

\*Roller (01) bearings available. Change "01" to other bearing code.  
Example: 94PI06401SBBL.

**Polyurethane on Aluminum (09 Tapered Roller Bearing)\***

PD	Wheel Diameter (inches)	Tread Width (inches)	Capacity (lbs) (rated for manual operation)	Overall Height (inches)	Swivel Lead (inches)	Approx. Wt. (lbs)	Caster Number+
	8	3	2520	10 1/2	2 1/2	37	94PD08509SBBL
	10	3	3000	12 1/2	2 1/2	39 1/2	94PD10509SBBL

\*Roller (01) bearings available. Change "09" to other bearing code.  
Roller example: 92PD08501SBBL.

**Thick Tread Polyurethane (09 Tapered Roller Bearing)**

PX	Wheel Diameter (inches)	Tread Width (inches)	Capacity (lbs) (rated for manual operation)	Overall Height (inches)	Swivel Lead (inches)	Approx. Wt. (lbs)	Caster Number+
	6	3	2250	8 1/2	2 1/2	37 1/4	94PX06509SBBL
	8	3	2780	10 1/2	2 1/2	41 1/2	94PX08509SBBL
	8	4	3850	10 1/2	2 1/2	48	94PX08709SBBL
	10	3	3300	12 1/2	2 1/2	46	94PX10509SBBL
	10	4	4620	12 1/2	2 1/2	55	94PX10709SBBL
	12	4	5000	15 1/2	2 1/2	60	94PX12709SBBL

**Vulkollan on Cast Iron (09 Tapered Bearing)\***

VY	Wheel Diameter (inches)	Tread Width (inches)	Capacity (lbs) (rated for manual operation)	Overall Height (inches)	Swivel Lead (inches)	Approx. Wt. (lbs)	Caster Number+
	6	2 1/2	2350	8 1/2	2 1/2	36	94VY06409SBBL
	6	3	3000	8 1/2	2 1/2	37 1/4	94VY06509SBBL
	8	3	4000	10 1/2	2 1/2	41	94VY08509SBBL
	10	3	5000	12 1/2	2 1/2	45 1/2	94VY10509SBBL

\*Roller (01) and Precision Ball (28) bearings available. Change "09" to other bearing code. Precision Ball example: 94VY06428SBBL.

**Thick Tread Vulkollan (09 Roller Bearing)\***

VX	Wheel Diameter (inches)	Tread Width (inches)	Capacity (lbs) (rated for manual operation)	Overall Height (inches)	Swivel Lead (inches)	Approx. Wt. (lbs)	Caster Number+
	6	3	3000	8 1/2	2 1/2	37 1/4	94VX06509SBBL
	8	3	4000	10 1/2	2 1/2	41 1/2	94VX08509SBBL
	10	3	5000	12 1/2	2 1/2	46	94VX10509SBBL

\*Roller (01) and Precision Ball (28) bearings available. Change "09" to other bearing code. Precision Ball example: 94VX06428SBBL.

**Trionix™ High Impact Polymer (28 Precision Ball Bearing)**

NX	Wheel Diameter (inches)	Tread Width (inches)	Capacity (lbs) (rated for manual operation)	Overall Height (inches)	Swivel Lead (inches)	Approx. Wt. (lbs)	Caster Number+
	6	2 1/2	5000	8 1/2	2 1/2	36	94NX06428SBBL
	6	3	5000	8 1/2	2 1/2	37 1/4	94NX06528SBBL
	8	3	5000	10 1/2	2 1/2	41	94NX08528SBBL
	10	3	5000	12 1/2	2 1/2	45 1/2	94NX10528SBBL

**Phenolic (09 Tapered Roller Bearing)**

TM	Wheel Diameter (inches)	Tread Width (inches)	Capacity (lbs) (rated for manual operation)	Overall Height (inches)	Swivel Lead (inches)	Approx. Wt. (lbs)	Caster Number+
	6	2 1/2	1620	8 1/2	2 1/2	32 1/4	94TM06409SBBL
	8	3	2500	10 1/2	2 1/2	38	94TM08509SBBL
	10	2 1/2	2500	12 1/2	2 1/2	46	94TM10409SBBL
	10	3	2900	12 1/2	2 1/2	49	94TM10509SBBL
	12	3 1/2	4000	15 1/2	2 1/2	52 3/4	94TM12609SBBL
	12	4	5000	15 1/2	2 1/2		94TM12709SBBL

+ For Rigid models change "SBBL" to "RBBL" to end of base caster number.



**Laminated Phenolic (09 Tapered Roller Bearing)**

TL	Wheel Diameter (inches)	Tread Width (inches)	Capacity (lbs) (rated for manual operation)	Overall Height (inches)	Swivel Lead (inches)	Approx. Wt. (lbs)	Caster Number+
	6	3	2000	8 1/2	2 1/2	29 1/2	94TL06509SBBL
	8	3	2500	10 1/2	2 1/2	32 1/4	94TL08509SBBL
	10	3	3000	12 1/2	2 1/2	46	94TL10509SBBL
	12	3 1/2	4000	15 1/2	2 1/2	49 3/4	94TL12609SBBL

**Cast Iron (09 Tapered Roller Bearing)**

CA	Wheel Diameter (inches)	Tread Width (inches)	Capacity (lbs) (rated for manual operation)	Overall Height (inches)	Swivel Lead (inches)	Approx. Wt. (lbs)	Caster Number+
	6	3	2800	8 1/2	2 1/2	38 1/2	94CA06509SBBL
	8	3	2800	10 1/2	2 1/2	38 1/2	94CA08509SBBL
	8	4	4000	10 1/2	2 1/2	52 1/2	94CA08709SBBL
	10	3	2800	12 1/2	2 1/2	43 1/2	94CA10509SBBL
	12	3	2800	15 1/2	2 1/2	49 1/2	94CA12509SBBL
	12	3 1/2	4000	15 1/2	2 1/2	63	94CA12609SBBL

**Drop Forged Steel (09 Tapered Roller Bearing)**

FS	Wheel Diameter (inches)	Tread Width (inches)	Capacity (lbs) (rated for manual operation)	Overall Height (inches)	Swivel Lead (inches)	Approx. Wt. (lbs)	Caster Number+
	6	2 1/2	4000	8 1/2	2 1/2	37	94FS06409SBBL
	6	3	5000	8 1/2	2 1/2	45	94FS06509SBBL
	8	3	4500	10 1/2	2 1/2	44	94FS08509SBBL
	8	4	5000	10 1/2	2 1/2	47	94FS08709SBBL
	10	3	5000	12 1/2	2 1/2	53 3/4	94FS10509SBBL
	10	4	5000	12 1/2	2 1/2	73 1/2	94FS10709SBBL

**Ductile Iron Crowned Tread (09 Tapered Roller Bearing)\***

FR	Wheel Diameter (inches)	Tread Width (inches)	Capacity (lbs) (rated for manual operation)	Overall Height (inches)	Swivel Lead (inches)	Approx. Wt. (lbs)	Caster Number+
	6	2 1/2	3500	8 1/2	2 1/2	34	94FR06409SBBL
	6	3	5000	8 1/2	2 1/2	35	94FR06509SBBL
	8	3	5000	10 1/2	2 1/2	41	94FR08509SBBL
	10	3	5000	12 1/2	2 1/2	46	94FR10509SBBL

\*Roller (01) and Precision Ball (28) bearings available. Change "09" to other bearing code. Roller example: 94FR08501SBBL.

**Ductile Iron Flat Tread (09 Tapered Roller Bearing)\***

FM	Wheel Diameter (inches)	Tread Width (inches)	Capacity (lbs) (rated for manual operation)	Overall Height (inches)	Swivel Lead (inches)	Approx. Wt. (lbs)	Caster Number+
	6	2 1/2	3500	8 1/2	2 1/2	34	94FM06409SBBL
	6	3	5000	8 1/2	2 1/2	35	94FM06509SBBL
	8	3	5000	10 1/2	2 1/2	41	94FM08509SBBL
	10	3	5000	12 1/2	2 1/2	46	94FM10509SBBL
	12	3 1/2	5000	15 1/2	2 1/2	67 1/2	94FM12609SBBL

\*Roller (01) and Precision Ball (28) available. Change "09" to other bearing code. Straight Roller example: 94FM08501BBL.

**Ductile Iron V-Groove Tread (09 Tapered Roller Bearing)\***

VM	Wheel Diameter (inches)	Tread Width (inches)	Capacity (lbs) (rated for manual operation)	Overall Height (inches)	Swivel Lead (inches)	Approx. Wt. (lbs)	Caster Number+
	6	2 1/2	3500	8 1/2	2 1/2	34	94VM06409SBBL
	6	3	5000	8 1/2	2 1/2	35	94VM06509SBBL
	8	3	5000	10 1/2	2 1/2	41	94VM08509SBBL
	10	3	5000	12 1/2	2 1/2	46	94VM10509SBBL

\*Roller (01) and Precision Ball (28) bearings available. Change "09" to other bearing code. Roller example: 94VM08501SBBL.

# 94

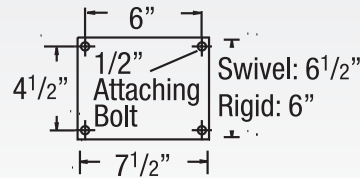
## 94 TRL Super Duty Casters (Tapered Thrust Swivel Section)

CAPACITY TO 10000

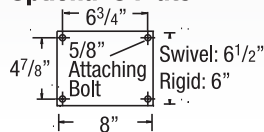


This caster has a precision roller bearing load and thrust swivel section (thrust swivel section = "TRL") and is precision machined to provide long life with greater capacity for that very rugged application. Made from AISI 1045 drop forged steel.

### MOUNTING OPTIONS Standard Plate



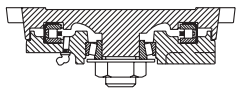
### Special Order Plate Optional C Plate



### TYPICAL APPLICATIONS

- Die carts
- Towed trailers
- Automotive plants
- Aerospace industry
- Work stations
- Steel mills
- Aircraft maintenance
- Gantries

### SWIVEL CROSS SECTION



### FEATURES

- **Top Plate and Yoke Base:** 1/2" thick AISI 1045 drop forged steel
- **Swivel Load Race:** Precision tapered roller bearing which has 5" outside diameter for increased capacity
- **Thrust Bearing:** 1-1/4" tapered roller bearing
- **Legs:** 3/8" formed steel plate welded inside and outside for additional strength
- **King Bolt:** 1-1/4" diameter integrally forged with top plate for maximum strength
- **Axle:** 1" solid axle with lock nut
- **Lubrication:** Zerk fitting in yoke base and wheel hubs for ease of lubrication
- Alternate or custom caster configurations available

### RIG OPTIONS

- Spring-loaded, dual wheel models available, consult factory
- **Sealed swivel section** specify **NS94**

### BRAKE OPTIONS

To order, add brake code below to end of model. Example: 94PY06509STRLP

**Poly Cam** specify **P**

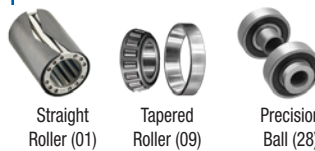


**Single Side** specify **SSB94**. **Double Sided** specify **DSB94**

**Face Contact** specify **F**



### BEARING OPTIONS



**Wrap Around** specify **WB94**

Hand operated field installable **Swivel Lock** order **SL940000** separately (Yokes must be notched)



**Welded Swivel Lock** specify **L**

	Wheel Diameter (Inches)	Tread Width (Inches)	Capacity (Lbs) (Rigid or manual operation)	Overall Height (Inches)	Swivel Lead (Inches)	Approx. Wt. (Lbs)	Caster Number+
--	-------------------------	----------------------	--	-------------------------	----------------------	-------------------	----------------

Moldon Rubber on Cast Iron (09 Tapered Roller Bearing)							
<b>MR</b>	8	3	900	10 1/2	2 1/2	36 3/4	94MR08509STR
	10	3	1000	12 1/2	2 1/2	39 3/4	94MR10509STR
	10	4	1400	12 1/2	2 1/2	50 3/4	94MR10709STR
	12	3 1/2	1500	15 1/2	2 1/2	55 3/4	94MR12609STR
	12	4	1600	15 1/2	2 1/2	63 1/4	94MR12709STR

Heavy Duty Moldon Rubber on Cast Iron (09 Tapered Bearing)							
<b>MH</b>	10	3	1800	12 1/2	2 1/2	39 3/4	94MH10509STR

+ For Rigid models change "STRL" to "RTRL" to end of base caster number.

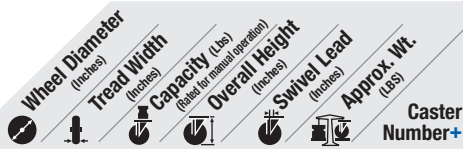
Polyurethane on Cast Iron (09 Tapered Roller Bearing)							
<b>PY</b>	6	3	2000	8 1/2	2 1/2	37 1/4	94PY06509STR
	8	3	2500	10 1/2	2 1/2	41	94PY08509STR
	8	4	3800	10 1/2	2 1/2	48	94PY08709STR
	10	3	3000	12 1/2	2 1/2	45 1/2	94PY10509STR
	10	4	4200	12 1/2	2 1/2	55	94PY10709STR
	12	3 1/2	4110	15 1/2	2 1/2	57 1/2	94PY12609STR
	12	4	4800	15 1/2	2 1/2	60	94PY12709STR

Polyurethane on Cast Iron (09 Tapered Roller Bearing)							
<b>PY 80A</b>	6	3	1600	8 1/2	2 1/2	37 1/4	94PY06509STR80A
	8	3	2000	10 1/2	2 1/2	41	94PY08509STR80A
	8	4	3000	10 1/2	2 1/2	48	94PY08709STR80A
	10	3	2400	12 1/2	2 1/2	45 1/2	94PY10509STR80A
	10	4	3550	12 1/2	2 1/2	55	94PY10709STR80A
	12	3 1/2	2160	15 1/2	2 1/2	57 1/2	94PY12609STR80A
	12	4	3840	15 1/2	2 1/2	60	94PY12709STR80A

To Specify Rigid or Swivel, insert "R" or "S" before "80A".  
Ex: 94PY06509STR80A.

Continue on next page >>

+ For Rigid models change "STRL" to "RTRL" to end of base caster number.



**Polyurethane on Cast Iron (09 Tapered Roller Bearing)\***

PI	Wheel Diameter (inches)	Tread Width (inches)	Capacity (lbs)	Overall Height (inches)	Swivel Lead (inches)	Approx. Wt. (lbs)	Caster Number+
	6	2 1/2	1600	8 1/2	2 1/2	34	94PI06409STRL
	6	3	2000	8 1/2	2 1/2	35 1/2	94PI06509STRL
	8	2 1/2	2000	10 1/2	2 1/2	34 1/2	94PI08409STRL
	8	3	2500	10 1/2	2 1/2	35 1/2	94PI08509STRL
	10	2 1/2	2200	12 1/2	2 1/2	41	94PI10409STRL
	10	3	3000	12 1/2	2 1/2	42 1/2	94PI10509STRL
	12	2 1/2	2500	15 1/2	2 1/2	51 1/2	94PI12409STRL
	12	3	3500	15 1/2	2 1/2	53	94PI12509STRL

\*Roller (01) bearings available. Change "01" to other bearing code. Example: 94PI06401STRL.

**Polyurethane on Aluminum (09 Tapered Roller Bearing)\***

PD	Wheel Diameter (inches)	Tread Width (inches)	Capacity (lbs)	Overall Height (inches)	Swivel Lead (inches)	Approx. Wt. (lbs)	Caster Number+
	8	3	2520	10 1/2	2 1/2	41	94PD08509STRL
	10	3	3000	12 1/2	2 1/2	45 1/2	94PD10509STRL

\*Roller (01) bearings available. Change "09" to other bearing code. Roller example: 94PD08501STRL.

**Thick Tread Polyurethane (09 Tapered Roller Bearing)**

PX	Wheel Diameter (inches)	Tread Width (inches)	Capacity (lbs)	Overall Height (inches)	Swivel Lead (inches)	Approx. Wt. (lbs)	Caster Number+
	6	3	2250	8 1/2	2 1/2	37 1/4	94PX06509STRL
	8	3	2780	10 1/2	2 1/2	41 1/2	94PX08509STRL
	8	4	3850	10 1/2	2 1/2	48	94PX08709STRL
	10	3	3300	12 1/2	2 1/2	46	94PX10509STRL
	10	4	4620	12 1/2	2 1/2	55	94PX10709STRL
	12	4	5280	15 1/2	2 1/2	60	94PX12709STRL

**Vulkollan on Cast Iron (09 Tapered Roller Bearing)\***

VY	Wheel Diameter (inches)	Tread Width (inches)	Capacity (lbs)	Overall Height (inches)	Swivel Lead (inches)	Approx. Wt. (lbs)	Caster Number+
	6	3	3000	8 1/2	2 1/2	37 1/4	94VY06509STRL
	8	3	4000	10 1/2	2 1/2	41	94VY08509STRL
	10	3	5000	12 1/2	2 1/2	45 1/2	94VY10509STRL

\*Roller (01) and Precision Ball (28) bearings available. Change "01" to other bearing code. Precision example: 94VY06528STRL.

**Thick Tread Vulkollan (09 Tapered Roller Bearing)\***

VX	Wheel Diameter (inches)	Tread Width (inches)	Capacity (lbs)	Overall Height (inches)	Swivel Lead (inches)	Approx. Wt. (lbs)	Caster Number+
	6	3	3000	8 1/2	2 1/2	37 1/4	94VX06509STRL
	8	3	4000	10 1/2	2 1/2	41 1/2	94VX08509STRL
	10	3	5000	12 1/2	2 1/2	46	94VX10509STRL

\*Roller (01) and Precision Ball (28) bearings available. Change "09" to other bearing code. Precision Ball bearing example: 94VX06528STRL.

**Trionix™ High Impact Polymer (28 Precision Ball Bearing)**

NX	Wheel Diameter (inches)	Tread Width (inches)	Capacity (lbs)	Overall Height (inches)	Swivel Lead (inches)	Approx. Wt. (lbs)	Caster Number+
	6	2 1/2	7100	8 1/2	2 1/2	36	94NX06428STRL
	6	3	7100	8 1/2	2 1/2	37 1/4	94NX06528STRL
	8	3	7100	10 1/2	2 1/2	41	94NX08528STRL
	10	3	7100	12 1/2	2 1/2	45 1/2	94NX10528STRL

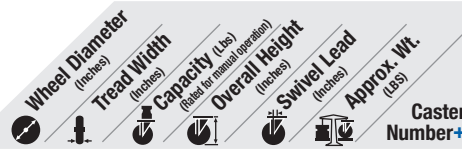
**Phenolic (09 Tapered Roller Bearing)**

TM	Wheel Diameter (inches)	Tread Width (inches)	Capacity (lbs)	Overall Height (inches)	Swivel Lead (inches)	Approx. Wt. (lbs)	Caster Number+
	6	2 1/2	2000	8 1/2	2 1/2	32 1/4	94TM06409STRL
	8	3	2500	10 1/2	2 1/2	38	94TM08509STRL
	10	3	2900	12 1/2	2 1/2	49	94TM10509STRL
	12	3 1/2	4000	15 1/2	2 1/2	49 3/4	94TM12609STRL
	12	4	8000	15 1/2	2 1/2	52 1/4	94TM12709STRL

**Laminated Phenolic (09 Tapered Roller Bearing)**

TL	Wheel Diameter (inches)	Tread Width (inches)	Capacity (lbs)	Overall Height (inches)	Swivel Lead (inches)	Approx. Wt. (lbs)	Caster Number+
	6	3	2000	8 1/2	2 1/2	29 1/2	94TL06509STRL
	8	3	2500	10 1/2	2 1/2	32 1/4	94TL08509STRL
	10	3	3000	12 1/2	2 1/2	46	94TL10509STRL
	12	3 1/2	4000	15 1/2	2 1/2	49 3/4	94TL12609STRL

+ For Rigid models change "STRL" to "RTRL" to end of base caster number.



**Cast Iron (09 Tapered Roller Bearing)**

CA	Wheel Diameter (inches)	Tread Width (inches)	Capacity (lbs)	Overall Height (inches)	Swivel Lead (inches)	Approx. Wt. (lbs)	Caster Number+
	6	3	2800	8 1/2	2 1/2	38 1/2	94CA06509STRL
	8	3	2800	10 1/2	2 1/2	38 1/2	94CA08509STRL
	8	4	6000	10 1/2	2 1/2	52 1/2	94CA08709STRL
	10	3	2800	12 1/2	2 1/2	43 1/2	94CA10509STRL
	12	3	2800	15 1/2	2 1/2	49 1/2	94CA12509STRL

**Drop Forged Steel (01 Roller or 09 Tapered Roller Bearing)**

FS	Wheel Diameter (inches)	Tread Width (inches)	Capacity (lbs)	Overall Height (inches)	Swivel Lead (inches)	Approx. Wt. (lbs)	Caster Number+
	6	2 1/2	4000	8 1/2	2 1/2	37	94FS06401STRL
	6	2 1/2	5000	8 1/2	2 1/2	37	94FS06409STRL
	6	3	6000	8 1/2	2 1/2	45	94FS06501STRL
	6	3	10000	8 1/2	2 1/2	45	94FS06509STRL
	8	3	4500	10 1/2	2 1/2	44	94FS08501STRL
	8	3	5500	10 1/2	2 1/2	44	94FS08509STRL
	8	4	8350	10 1/2	2 1/2	47	94FS08701STRL
	8	4	10000	10 1/2	2 1/2	47	94FS08709STRL
	10	3	5000	12 1/2	2 1/2	53 3/4	94FS10501STRL
	10	3	6000	12 1/2	2 1/2	53 3/4	94FS10509STRL
	10	4	8350	12 1/2	2 1/2	73 1/2	94FS10701STRL
	10	4	10000	12 1/2	2 1/2	73 1/2	94FS10709STRL

**V-Grooved Cast Iron (09 Tapered Roller Bearing)**

VL	Wheel Diameter (inches)	Tread Width (inches)	Capacity (lbs)	Overall Height (inches)	Swivel Lead (inches)	Approx. Wt. (lbs)	Caster Number+
	8	3	4000	10 1/2	2 1/2	42 3/4	94VL08509STRL
	10	3	4000	12 1/2	2 1/2	35 3/4	94VL10509STRL

**V-Grooved Drop Forged Steel (01 Roller or 09 Tapered Roller)**

VF	Wheel Diameter (inches)	Tread Width (inches)	Capacity (lbs)	Overall Height (inches)	Swivel Lead (inches)	Approx. Wt. (lbs)	Caster Number+
	6	3	6000	8 1/2	2 1/2	45	94VF06501STRL
	6	3	6500	8 1/2	2 1/2	45	94VF06509STRL
	8	3	6000	10 1/2	2 1/2	44	94VF08501STRL
	8	4	8350	10 1/2	2 1/2	47	94VF08701STRL
	8	4	10000	10 1/2	2 1/2	47	94VF08709STRL
	10	4	8350	12 1/2	2 1/2	73 1/2	94VF10701STRL
	10	4	10000	12 1/2	2 1/2	73 1/2	94VF10709STRL

**Ductile Iron Crowned Tread (01 Roller Bearing)\***

FR	Wheel Diameter (inches)	Tread Width (inches)	Capacity (lbs)	Overall Height (inches)	Swivel Lead (inches)	Approx. Wt. (lbs)	Caster Number+
	6	2 1/2	3500	8 1/2	2 1/2	34	94FR06409STRL
	6	3	6000	8 1/2	2 1/2	35	94FR06509STRL
	8	3	6000	10 1/2	2 1/2	41	94FR08509STRL
	10	3	6000	12 1/2	2 1/2	46	94FR10509STRL

\*Roller (01) and Precision Ball (28) bearings available. Change "09" to other bearing code. Roller example: 94FR08501STRL.

**Ductile Iron Flat Tread (09 Tapered Roller Bearing)\***

FM	Wheel Diameter (inches)	Tread Width (inches)	Capacity (lbs)	Overall Height (inches)	Swivel Lead (inches)	Approx. Wt. (lbs)	Caster Number+
	6	2 1/2	3500	8 1/2	2 1/2	34	94FM06409STRL
	6	3	6000	8 1/2	2 1/2	35	94FM06509STRL
	8	3	6000	10 1/2	2 1/2	41	94FM08509STRL
	10	3	6000	12 1/2	2 1/2	46	94FM10509STRL
	12	3 1/2	6000	15 1/2	2 1/2	67 1/2	94FM12609STRL

\*Roller (01) and Precision Ball (28) bearings available. Change "09" to other bearing code. Roller example: 94FM08501STRL.

**Ductile Iron V-Groove Tread (09 Tapered Roller Bearing)**

VM	Wheel Diameter (inches)	Tread Width (inches)	Capacity (lbs)	Overall Height (inches)	Swivel Lead (inches)	Approx. Wt. (lbs)	Caster Number+
	6	2 1/2	3500	8 1/2	2 1/2	34	94VM06409STRL
	6	3	6000	8 1/2	2 1/2	35	94VM06509STRL
	8	3	6000	10 1/2	2 1/2	41	94VM08509STRL
	10	3	6000	12 1/2	2 1/2	46	94VM10509STRL

\*Roller (01) and Precision Ball (28) bearings available. Change "09" to other bearing code. Roller example: 94VM08501STRL.

94TRL SERIES • CAPACITY TO 10000

HEAVY DUTY KINGPIN

# 95

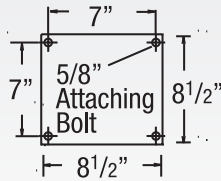
## 95 BBL Super Duty Casters (Ball Load Swivel)

CAPACITY TO 8000

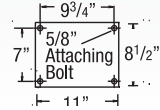


This popular caster series has a ball load swivel (ball load swivel = "BBL") and is precision machined and heat treated to provide long life with greater capacity for that very rugged application. Made from AISI 1045 forged steel.

### MOUNTING OPTIONS Standard Plate



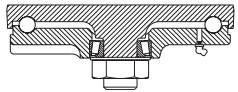
### Special Order Plate Optional T Plate



### TYPICAL APPLICATIONS

- Die carts
- Towed trailers
- Automotive plants
- Aerospace industry
- Work stations
- Steel mills
- Aircraft maintenance

### SWIVEL CROSS SECTION



+ For Rigid models change "SBBL" to "RBBL" to end of base caster number.

Wheel Diameter (Inches)	Tread Width (Inches)	Capacity (Lbs) (Rate for manual operation)	Overall Height (Inches)	Swivel Lead (Inches)	Approx. Wt. (Lbs)	Caster Number+
-------------------------	----------------------	--	-------------------------	----------------------	-------------------	----------------

### Moldon Rubber on Cast Iron (01 Roller Bearing)

MR	Wheel Diameter (Inches)	Tread Width (Inches)	Capacity (Lbs)	Overall Height (Inches)	Swivel Lead (Inches)	Approx. Wt. (Lbs)	Caster Number+
	10	4	1400	13	2 1/2	64 3/4	95MR10701SBBL
	12	4	1600	15 1/2	2 1/2	55 3/4	95MR12701SBBL
	16	5	2570	19	3	105 1/4	95MR16801SBBL

### Polyurethane on Cast Iron (09 Tapered Roller Bearing)\*

PY	Wheel Diameter (Inches)	Tread Width (Inches)	Capacity (Lbs)	Overall Height (Inches)	Swivel Lead (Inches)	Approx. Wt. (Lbs)	Caster Number+
	10	4	4200	13	2 1/2	71	95PY10709SBBL
	10	5	5000	13	2 1/2	82	95PY10809SBBL
	12	3 1/2	4110	15 1/2	2 1/2	73 1/2	95PY12609SBBL
	12	4	4800	15 1/2	2 1/2	76 1/4	95PY12709SBBL
	12	5	6000	15 1/2	2 1/2	90	95PY12809SBBL
	16	4	5970	19	3	111 1/2	95PY16709SBBL
	16	5	7700	19	3	126 1/4	95PY16809SBBL

\*Roller Bearings (01) available. To order change bearing code. Example 95PY08701SBBL.

### Trionix™ High Impact Polymer (28 Precision Ball Bearing)

NX	Wheel Diameter (Inches)	Tread Width (Inches)	Capacity (Lbs)	Overall Height (Inches)	Swivel Lead (Inches)	Approx. Wt. (Lbs)	Caster Number+
	6	2 1/2	7200	9	2 1/4	36	95NX06428SBBL
	6	3	7200	9	2 1/4	37 1/4	95NX06528SBBL
	8	2 1/2	7200	11	2 1/4	41	95NX08428SBBL
	8	3	7200	11	2 1/4	41	95NX08528SBBL
	10	2 1/2	7200	13	2 1/2	45 1/2	95NX10428SBBL
	10	3	7200	13	2 1/2	45 1/2	95NX10528SBBL



Premium Quality



Towing^



Environmentally Friendly

### FEATURES

- **Top Plate and Yoke Base:** 5/8" thick 1045 AISI drop-forged steel for extended use
- **Swivel Load Bearings:** 7" diameter machined and hardened raceway for smooth movement and extended wear
- **Component Thrust Bearing:** 1-1/4" tapered roller bearing
- **Legs:** 1/2" formed steel plate welded inside and out to yoke base
- **King Bolt:** Integrally forged with top plate
- **Axle:** 1-1/4" solid axle with locking nut
- Alternate or custom caster configurations available

### RIG OPTIONS

- **Sealed swivel** section specify **NS95**

### BRAKE OPTIONS

To order, add brake code below to end of model. Example: 95PY10709SBBLP

**Poly Cam** specify **P**

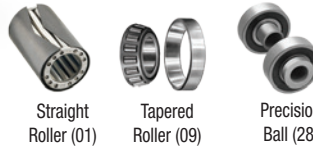


**Face Contact** specify **F**

**Welded Swivel Lock** specify **L**



### BEARING OPTIONS



Straight Roller (01)

Tapered Roller (09)

Precision Ball (28)

Hand operated field installable **Swivel Lock** order **SL954600** separately (Yokes must be notched)

+ For Rigid models change "SBBL" to "RBBL" to end of base caster number.

Wheel Diameter (Inches)	Tread Width (Inches)	Capacity (Lbs) (Rate for manual operation)	Overall Height (Inches)	Swivel Lead (Inches)	Approx. Wt. (Lbs)	Caster Number+
-------------------------	----------------------	--	-------------------------	----------------------	-------------------	----------------

### Thick Tread Polyurethane (09 Tapered Roller Bearing)\*

PX	Wheel Diameter (Inches)	Tread Width (Inches)	Capacity (Lbs)	Overall Height (Inches)	Swivel Lead (Inches)	Approx. Wt. (Lbs)	Caster Number+
	8	4	3850	11	2 1/4	63	95PX08709SBBL
	10	4	4620	13	2 1/2	71	95PX10709SBBL
	12	4	5280	15 1/2	2 1/2	76 1/4	95PX12709SBBL
	12	5	6600	15 1/2	2 1/2	90	95PX12809SBBL
	16	4	6570	19	3	111 1/2	95PX16709SBBL
	16	5	8470	19	3	126 1/4	95PX16809SBBL

\*Roller Bearings (01) available. To order change bearing code. Example 95PX08701SBBL.

### Phenolic (09 Tapered Roller Bearing)

TM	Wheel Diameter (Inches)	Tread Width (Inches)	Capacity (Lbs)	Overall Height (Inches)	Swivel Lead (Inches)	Approx. Wt. (Lbs)	Caster Number+
	8	6*	5000	11	2 1/2	54 1/2	95TM08909SBBL
	10	3	2900	13	2 1/2	27	95TM10509SBBL
	10	6*	5800	13	2 1/2	54	95TM10909SBBL
	12	4	8000	15 1/2	2 1/2	67 1/2	95TM12709SBBL

\*2 wheels bolted together.

### Laminated Phenolic (01 Roller Bearing/09 Tapered Roller Bearing)\*

TL	Wheel Diameter (Inches)	Tread Width (Inches)	Capacity (Lbs)	Overall Height (Inches)	Swivel Lead (Inches)	Approx. Wt. (Lbs)	Caster Number+
	6	5	8000	9	2 1/4	46	95TL06809SBBL
	8	6**	5000	11	2 1/2	54	95TL08909SBBL
	10	6**	5800	13	2 1/2	61 1/4	95TL10909SBBL
	12	3 1/2	4000	15 1/2	2 1/2	58 3/4	95TL12601SBBL
	16	4	8000	19	3	79 3/4	95TL16701SBBL

\*Tapered Roller Bearings (09) available. To order change bearing code. Example 95TL08709SBBL. \*\*2 wheels bolted together.

### Drop Forged Steel (01 Roller or 09 Tapered Roller Bearing)

FS	Wheel Diameter (Inches)	Tread Width (Inches)	Capacity (Lbs)	Overall Height (Inches)	Swivel Lead (Inches)	Approx. Wt. (Lbs)	Caster Number+
	6	3	6000	9	2 1/4	60 1/4	95FS06501SBBL
	6	3	8000	9	2 1/4	59 1/2	95FS06509SBBL
	8	4	8000	11	2 1/4	61 1/2	95FS08701SBBL
	8	4	8000	11	2 1/4	72 1/2	95FS08709SBBL
	10	3	5000	13	2 1/2	78 1/2	95FS10501SBBL
	10	4	8000	13	2 1/2	86 1/4	95FS10701SBBL
	10	4	8000	13	2 1/2	86 1/2	95FS10709SBBL

### Ductile Iron (09 Tapered Roller Bearing)\*

FM	Wheel Diameter (Inches)	Tread Width (Inches)	Capacity (Lbs)	Overall Height (Inches)	Swivel Lead (Inches)	Approx. Wt. (Lbs)	Caster Number+
	12	3 1/2	6000	15 1/2	2 1/2	83 1/2	95FM12609SBBL

\*Roller Bearings (01) available. To order change "09" to other bearing code. Example: 95FM12601SBBL.

# 95

## 95 TRL Super Duty Casters (Tapered Thrust Swivel Section)

CAPACITY TO 17000

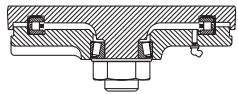


This popular caster series has a precision roller bearing load and thrust swivel section (thrust swivel section = "TRL"). Rigs are precision machined to provide long life with greater capacity for that very rugged application. Made from AISI 1045 drop forged steel.

### TYPICAL APPLICATIONS

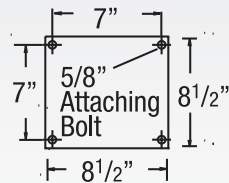
- Die carts
- Towed trailers
- Automotive plants

### SWIVEL CROSS SECTION



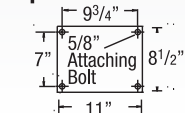
### MOUNTING OPTIONS

#### Standard Plate



#### Special Order Plate

#### Optional T Plate



+ For Rigid models change "STRL" to "RTRL" to end of base caster number.

### Moldon Rubber on Cast Iron (01 Roller)

MR	Wheel Diameter (inches)	Tread Width (inches)	Capacity (Lbs) (Rated for manual operation)	Overall Height (inches)	Swivel Lead (inches)	Approx. Wt. (Lbs)	Caster Number+
	10	4	1400	13	2 1/2	64 3/4	95MR10701STRL
	12	4	1600	15 1/2	2 1/2	55 3/4	95MR12701STRL
	16	5	2570	19	3	105 1/4	95MR16801STRL

### Polyurethane on Cast Iron (09 Tapered Roller Bearing)\*

PY	Wheel Diameter (inches)	Tread Width (inches)	Capacity (Lbs) (Rated for manual operation)	Overall Height (inches)	Swivel Lead (inches)	Approx. Wt. (Lbs)	Caster Number+
	8	4	3800	11	2 1/4	63	95PY08709STRL
	10	4	4200	13	2 1/2	71	95PY10709STRL
	10	5	5000	13	2 1/2	82	95PY10809STRL
	12	3 1/2	4110	15 1/2	2 1/2	73 1/2	95PY12609STRL
	12	4	4800	15 1/2	2 1/2	76 1/4	95PY12709STRL
	12	5	6000	15 1/2	2 1/2	90	95PY12809STRL
	16	4	5970	19	3	111 1/2	95PY16709STRL
	16	5	7700	19	3	126 1/4	95PY16809STRL

\*Roller (01) bearings available. To order change "09" to other bearing code. Example: 95PY08701STRL.



Premium Quality



Towing^



Environmentally Friendly

### FEATURES

- **Top Plate and Yoke Base:** 5/8" thick AISI 1045 drop-forged steel precision machined for bearings
- **Swivel Load Bearings:** 7" diameter machined raceway with a precision tapered roller bearing which is protected by a forged labyrinth skirt
- **Component Thrust Bearing:** 1-1/4" tapered roller bearing
- **Legs:** 1/2" steel plate formed for greater strength and welded to yoke base both inside and outside
- **King Bolt:** 1-1/4" integrally forged with top plate machined and threaded
- **Axle:** 1-1/4" solid axle and lock nut
- Alternate or custom caster configurations available

### RIG OPTIONS

- **Sealed swivel** section specify **NS95**

### BRAKE OPTIONS

To order, add brake code below to end of model. Example: 95PY08709STRLP

**Poly Cam** specify **P**



**Face Contact** specify **F**

**Welded Swivel Lock** specify **L**



### BEARING OPTIONS



Straight Roller (01)



Tapered Roller (09)



Precision Ball (28)



Hand operated field installable **Swivel Lock** order **SL954600** separately (Yokes must be notched)

+ For Rigid models change "STRL" to "RTRL" to end of base caster number.

Wheel Diameter (inches)	Tread Width (inches)	Capacity (Lbs) (Rated for manual operation)	Overall Height (inches)	Swivel Lead (inches)	Approx. Wt. (Lbs)	Caster Number+
-------------------------	----------------------	---	-------------------------	----------------------	-------------------	----------------

### Thick Tread Polyurethane (09 Tapered Roller Bearing)\*

PX	Wheel Diameter (inches)	Tread Width (inches)	Capacity (Lbs) (Rated for manual operation)	Overall Height (inches)	Swivel Lead (inches)	Approx. Wt. (Lbs)	Caster Number+
	8	4	3850	11	2 1/4	63	95PX08709STRL
	10	4	4620	13	2 1/2	71	95PX10709STRL
	12	4	5280	15 1/2	2 1/2	76 1/4	95PX12709STRL
	12	5	6600	15 1/2	2 1/2	90	95PX12809STRL
	16	4	6570	19	3	111 1/2	95PX16709STRL
	16	5	8470	19	3	126 1/4	95PX16809STRL

\*Roller (01) bearings available. To order change "09" to other bearing code. Example: 95PX08701STRL.

Continue on next page >>

+ For Rigid models change "STRL" to "RTRL" to end of base caster number.

	Wheel Diameter (Inches)	Tread Width (Inches)	Capacity (Lbs) (Based on manual operation)	Overall Height (Inches)	Swivel Lead (Inches)	Approx. Wt. (Lbs)	Caster Number+
<b>Phenolic (09 Tapered Roller Bearing)</b>							
TM	8	6*	5000	11	2 1/2	54 1/2	95TM08909STRL
	10	6*	5800	13	2 1/2	54	95TM10909STRL
	12	4	8000	15 1/2	2 1/2	67 1/2	95TM12709STRL
*2 wheels bolted together.							

	Wheel Diameter (Inches)	Tread Width (Inches)	Capacity (Lbs) (Based on manual operation)	Overall Height (Inches)	Swivel Lead (Inches)	Approx. Wt. (Lbs)	Caster Number+
<b>Laminated Phenolic (01 Roller Bearing/09 Tapered Roller Bearing)**</b>							
TL	6	5	8000	9	2 1/4	46	95TL06809STRL
	8	6*	5000	11	2 1/2	54	95TL08909STRL
	10	6*	5800	13	2 1/2	61 1/4	95TL10909STRL
	12	3 1/2	4000	15 1/2	2 1/2	58 3/4	95TL12601STRL
	16	4	8000	19	3	79 3/4	95TL16701STRL
*2 wheels bolted together.							
**Tapered Roller Bearings (09) available. To order change "01" to other bearing code. Example: 95TL06801STRL.							

	Wheel Diameter (Inches)	Tread Width (Inches)	Capacity (Lbs) (Based on manual operation)	Overall Height (Inches)	Swivel Lead (Inches)	Approx. Wt. (Lbs)	Caster Number+
<b>Drop Forged Steel (01 Roller or 09 Tapered Roller Bearing)</b>							
FS	6	3	6000	9	2 1/4	60 1/4	95FS06501STRL
	6	3	10000	9	2 1/4	59 1/2	95FS06509STRL
	8	4	8000	11	2 1/4	61 1/2	95FS08701STRL
	8	4	10000	11	2 1/4	72 1/2	95FS08709STRL
	10	3	6500	13	2 1/2	78 1/2	95FS10509STRL
	10	4	8350	13	2 1/2	86 1/4	95FS10701STRL
	10	4	10000	13	2 1/2	86 1/2	95FS10709STRL

+ For Rigid models change "STRL" to "RTRL" to end of base caster number.

	Wheel Diameter (Inches)	Tread Width (Inches)	Capacity (Lbs) (Based on manual operation)	Overall Height (Inches)	Swivel Lead (Inches)	Approx. Wt. (Lbs)	Caster Number+
<b>Large Bore Drop Forged Steel (09 Tapered Roller Bearing)</b>							
FH	6	3	17000	9	2 1/4	59 1/2	95FH06509STRL
	8	4	17000	11	2 1/4	72 1/2	95FH08709STRL
	10	3	6000	13	2 1/2	78 1/2	95FH10509STRL
	10	4	17000	13	2 1/2	86 1/2	95FH10709STRL

	Wheel Diameter (Inches)	Tread Width (Inches)	Capacity (Lbs) (Based on manual operation)	Overall Height (Inches)	Swivel Lead (Inches)	Approx. Wt. (Lbs)	Caster Number+
<b>V-Groove Drop Forged Steel (01 Roller Bearing/09 Tapered Roller Bearing)</b>							
VF	6	3	6000	9	2 1/4	59 1/2	95VF06501STRL
	6	3	6500	9	2 1/4	45	95VF06509STRL
	8	4	8350	11	2 1/4	61 1/2	95VF08701STRL
	10	3	6000	13	2 1/2	67 3/4	95VF10501STRL
	10	3	6000	13	2 1/2	67 3/4	95VF10509STRL
	10	4	8350	13	2 1/2	89 1/2	95VF10701STRL

	Wheel Diameter (Inches)	Tread Width (Inches)	Capacity (Lbs) (Based on manual operation)	Overall Height (Inches)	Swivel Lead (Inches)	Approx. Wt. (Lbs)	Caster Number+
<b>Large Bore V-Groove Drop Forged Steel (09 Tapered Roller Bearing)</b>							
VH	6	3	10000	9	2 1/4	45	95VH06509STRL
	8	4	15000	11	2 1/4	61 1/2	95VH08709STRL
	10	4	15000	13	2 1/2	86 1/4	95VH10709STRL

	Wheel Diameter (Inches)	Tread Width (Inches)	Capacity (Lbs) (Based on manual operation)	Overall Height (Inches)	Swivel Lead (Inches)	Approx. Wt. (Lbs)	Caster Number+
<b>Ductile Iron (01 Roller Bearing)</b>							
FM	12	3 1/2	6000	15 1/2	2 1/2	83 1/2	95FM12601STRL

# Sometimes Even HEAVY DUTY CASTERS Need Protection from the Elements.

- Prevent corrosion and increase your caster life
- Maintain clean and safe operations
- Keep rolling in the toughest environments



**04 SERIES**  
Page 77



**05 SERIES**  
Pages 78 - 79



**120 KINGPINLESS**  
Pages 80 - 81



**330 KINGPINLESS**  
Page 84



**E5 ECONOMY SERIES**  
Pages 85 - 86

**ALBION**  
the caster experts