

# AIR CARGO AND AVIATION

CAPACITY RANGE 375-450 LBS



**Cargo Conveyor Casters**

## Common Applications:

- Aviation Industry
- Cargo Industry
- Automotive Industry
- Conveyor Systems



**Albion 03 Air Cargo/Conveyor**  
Capacity to 450 ..... 119



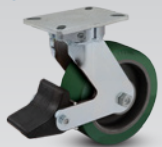
**Faultless Air Cargo/Conveyor**  
Capacity to 375 ..... 120



**Jarvis Air Cargo/Conveyor**  
Capacity to 400 ..... 121

## Before you fly, you need to roll! View Our Popular Aviation Caster Series:

### LASER CUT INTEGRATED BRAKES



New PLB brakes are now available for aviation industry casters (pages 48-51).

### LONGER LASTING KINGPINLESS CASTERS



If you need casters that will be impacted or shock-loaded ... or casters more suited for power-towed applications, see the Heavy Duty Kingpinless Section (pages 41-58).

### DUAL WHEELS FOR ULTIMATE STABILITY



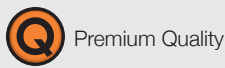
Looking to gain higher load ratings with low overall heights, better product stability and floor protection, or softer wheel options while maintaining high load ratings? View all of our dual wheel options (pages 100-112).

### SPRING LOADED CASTERS



If you need casters that offer spring loaded protection from damaging shock, unwanted vibration and reduced noise levels, see the Spring Loaded Section (pages 87-99).

# 03



## Air Cargo/Conveyor Casters

CAPACITY TO 450



Priority Economy

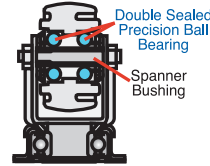
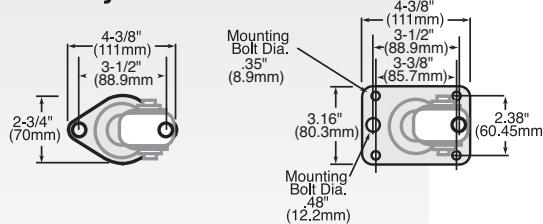
Priority with Optional Toe Guard

Three quality levels to meet all of your air cargo conveyor needs.

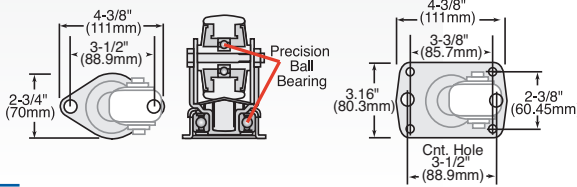
**Priority Premier™** is built to exceptional manufacturing standards. **Priority** features precision bearings in wheel and raceway. **Priority Economy** casters provide dependability on a budget.

### MOUNTING OPTIONS

#### Priority Premier™ Models



#### Priority and Priority Economy Models



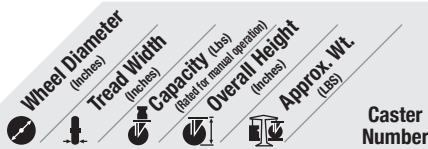
### TOE GUARD OPTIONS



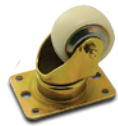
106mm Specify T0-106 120mm Specify T0-120 145mm Specify T0-145

### TYPICAL APPLICATIONS

- Cargo Conveyor Equipment



#### Priority Premier™ Rectangular Plate Yellow Dichromate Finish



2 1/4 (58mm)	1 3/4 (34mm)	450	3 3/4 (96mm)	1 3/4	03XN02028S004C
Double sealed precision ball bearing.					

#### Priority Premier™ Rectangular Plate Yellow Dichromate Metal Toe Guard



2 1/4 (58mm)	1 3/4 (34mm)	450	3 3/4 (96mm)	1 3/4	03XN02028S001C
Double sealed precision ball bearing.					

### FEATURES

#### Priority Premier™

- Sealed precision ball bearing in swivel section and wheel
- 1/8" formed steel construction
- Additional O-ring seal in swivel section prevents contamination
- Shock resistant premium nylon wheel
- Zinc plated finish on diamond plate models, yellow dichromate finish on rectangular plate models
- Optional Integral toe guard on 2 1/4" models
- Metal Thread Guards

#### Priority

- Sealed precision ball bearing in swivel section and wheel
- 1/8" formed steel construction
- White nylon thread guards
- Shock resistant wheels
- Zinc plated finish

#### Priority Economy

- Semi-precision unsealed ball bearings
- 1/8" formed steel construction
- Black polypropylene thread guards
- Shock resistant wheels
- Zinc plated finish



#### Priority Diamond Plate Zinc Finish



2 1/4 (58mm)	1 11/32 (34mm)	450	3 3/4 (96mm)	1 3/4	03PR02028S
2 3/4 (70mm)	1 11/32 (34mm)	450	4 (102mm)	1 3/4	03PR03028S

#### Priority Rectangular Plate Zinc Finish



2 1/4 (58mm)	1 11/32 (34mm)	450	3 3/4 (96mm)	1 3/4	03PR02028S004
2 3/4 (70mm)	1 11/32 (34mm)	450	4 (102mm)	1 3/4	03PR03028S004

#### Priority Economy Diamond Plate Zinc Finish



2 1/4 (58mm)	1 11/32 (34mm)	450	3 3/4 (96mm)	1 3/4	03PE02028S
2 3/4 (70mm)	1 11/32 (34mm)	450	4 (102mm)	1 3/4	03PE03028S

#### Priority Economy Rectangular Plate Zinc Finish



2 1/4 (58mm)	1 11/32 (34mm)	450	3 3/4 (96mm)	1 3/4	03PE02028S004
2 3/4 (70mm)	1 11/32 (34mm)	450	4 (102mm)	1 3/4	03PE03028S004

# Faultless Precision, Heavy Duty Air Cargo/Conveyor Caster

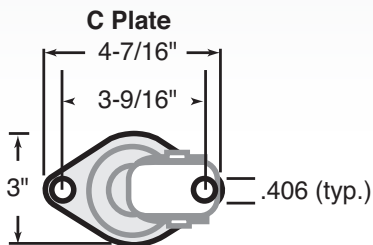
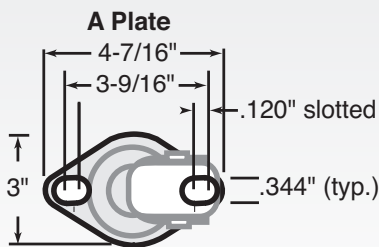


CAPACITY TO 375



Designed for inverted applications, these Faultless conveyor casters are designed for easy installation and replacement in the field. Special dust-and-grease cap and special all-temperature lubricant are standard along with precision bearing swivel and needle bearing wheels. Corrosive-resistant zinc dichromate finish is standard.

## MOUNTING OPTIONS



## TYPICAL APPLICATIONS

- Cargo Conveyor Equipment

## FEATURES

- **Raceways:** Fully sealed raceways for low maintenance and protection of the swivel head in outdoor environments
- **Swivel Bearings:** Precision bearing swivel
- **Wheel Bearings:** Need bearings or ball bearings; thread guards standard for longer life
- **Finish:** Corrosion-resistant zinc dichromate or powder coated finishes
- **Suggested Temperature Range:** 20°F to +180°F
- **Special Top Plates Available:** For specific installation requirements, consult factory

	Wheel Diameter (Inches)	Tread Width (Inches)	Capacity (Lbs) (rated for manual operation)	Overall Height (Inches)	Swivel Radius (Inches)	Caster Number
<b>Polyflex Brown (Needle Bearing) with A Plate</b>	2-3/4	13/8	375	4 1/32	23/8	27015



<b>Polyflex Brown (Needle Bearing) with C Plate</b>	3	15/6	270	325/32	25/8	25675
	3	15/6	300	41/32	215/32	25696



<b>Polyflex Grey with Toe Guard (Needle Bearing) with A Plate</b>	2-3/4	13/8	375	4 1/32	23/16	27016
---	-------	------	-----	--------	-------	-------



<b>Polyflex Brown with Toe Guard (Needle Bearing) with A Plate</b>	2-3/4	13/8	375	4 1/32	2 13/16	26381
--	-------	------	-----	--------	---------	-------



# Jarvis Air Cargo/Conveyor Casters

CAPACITY TO 400

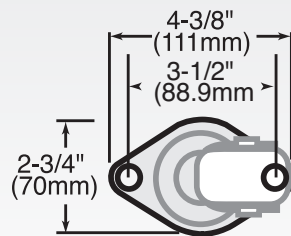


## FEATURES

- Dual ball bearing for increased rollability and weight capacity
- 1/8" formed steel construction
- Quiet operation
- Corrosion resistant and durable attractive yellow dichromate finish
- Metal thread guards to prevent debris from entering bearing
- Full swivel seals for longer life

This air cargo caster is manufactured to withstand the day after day abuse of the air cargo industry. Designed for use on cargo sorting decks and trailers, the premium grade nylon wheel is designed to withstand heavy shock impacts and the dual ball bearings provide smooth rolling under the most abusive environments.

## MOUNTING OPTIONS



## TYPICAL APPLICATIONS

- Cargo Conveyor Equipment

Wheel Diameter (Inches)	Tread Width (Inches)	Capacity (Lbs) (Rated for manual operation)	Overall Height (Inches)	Swivel Lead (Inches)	Approx. Wt. (Lbs)	Caster Number
3	1 1/4	400	4	15/32	1 3/4	FG3NYLONAIR

