




POLYURETHANE TREAD WHEELS





Vulkollan® Wheels

-  Vulkollan® Premium Polyurethane (VY, VX)...148-150




Polyurethane on Iron Wheels

-  Polyurethane on Iron (PY, PH, PI).....151-152, 154
-  Polyurethane on Iron (Thick Tread) (PX).....153
-  Polyurethane on Heavy Duty Cast Iron (PF).....154



Polyurethane on Aluminum Wheels

-  Polyurethane on Aluminum (PA, PD).....155
-  Polyurethane Round Tread on Aluminum (PM, PM 80A).....156
-  Polyurethane Round Tread on Aluminum (AX).....156
-  Magnum Round Tread Polyurethane on Aluminum (UA).....157




Polyurethane Solid Elastomer Wheels

-  Polyurethane X-treme® Plus (XP).....159-160
-  Polyurethane X-treme® (XI).....159-160
-  Polyurethane Solid Elastomer (SE).....161



Polyurethane on Polypropylene Wheels

-  Polyurethane on Polypropylene (XA)161
-  Eagle Polyurethane on Polypropylene (EG).....162

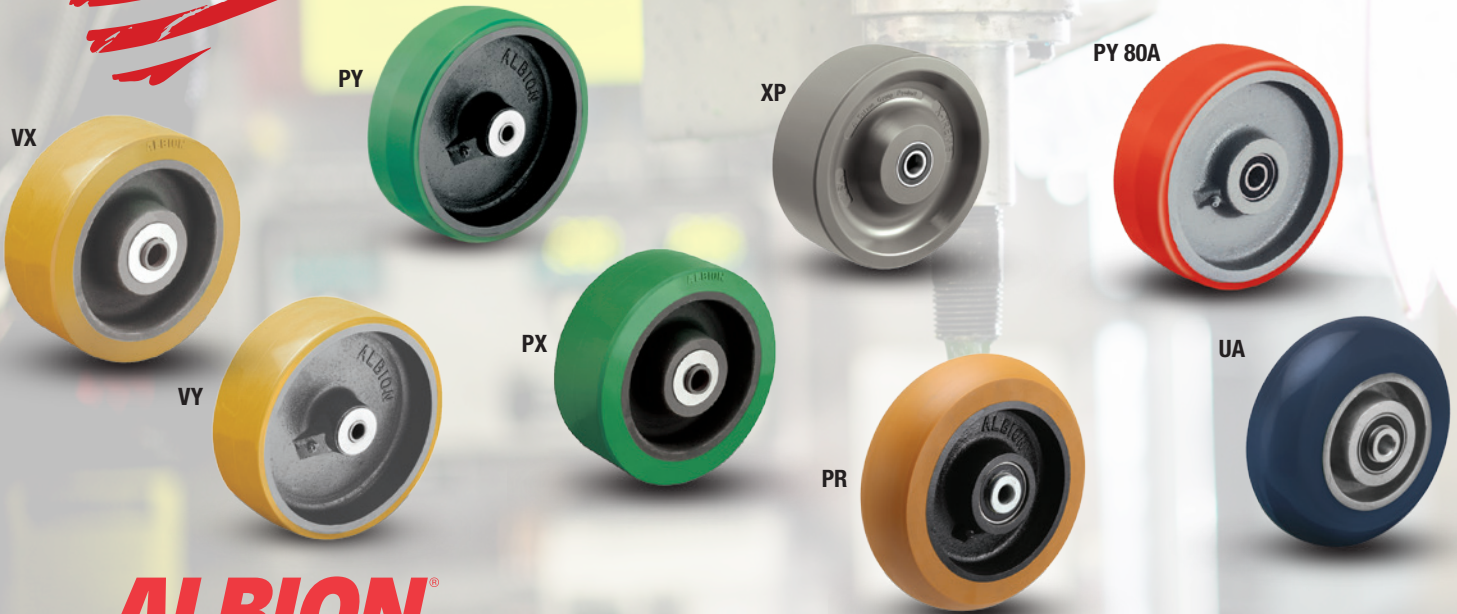
Polyurethane Specialty Wheels

-  Polyurethane Reactive (PR).....155
-  Polyurethane Swivel-EAZ® (EY, EZ).....158
-  Polyurethane V-Groove (XV).....165

Polyurethane Press-On Wheels

-  Polyurethane Press-On (OG).....163-165
-  Polyurethane Press-On Mini (OG).....165

POLYURETHANE EXPERTS



- **Strong tread bond for long life**
- **Close tolerance cores for precise manufacturing and quality control**
- **Superior material blends for the highest quality treads**

ALBION
the caster experts

Albion offers an expansive range of polyurethane wheels, with various material blends designed to deliver specific features and application benefits (see pages 146-165 for full offering)

Our popular **80A** and **95A** durometer wheels are **designed and proven for industrial use**—many offering a **3 year warranty**

New formulas and tread profiles continue to be developed to **enhance ergonomics (AX, PF, and UA wheels)**

Standard and custom keyway inserts are available

Custom machining and crown facing

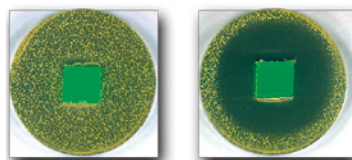
Cutter bars, brakes, and sound dampening pads available

Custom colors available (minimums may apply)

Specialty Wheel Development – Albion’s team of engineers has significant experience designing and developing new wheels for specialty applications in virtually any industry. Contact factory with your needs!

Anti-Microbial Additives – Bacterial inhibitors are available in many of our urethane products. If your food, medical, or laboratory application requires additional peace of mind, this is a great wheel solution.

PREVENZ™ ANTIMICROBIAL*



*Please contact factory for ordering information.

VULKOLLAN® WHEELS (VY/VX)

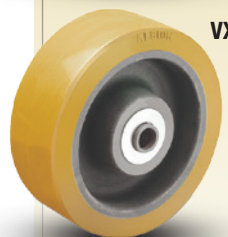
- **Highest quality** polyurethane in the world
- **Superior** in load capacity, reliability, strength, and life
- **Reduce** your downtime and maintenance costs with Vulkollan!



Tear Resistance

Standard Polyurethane

Vulkollan® Polyurethane Is Much Harder to Tear



Product Life

Standard Polyurethane

Vulkollan® Polyurethane Last up to 40% Longer!

See next page for more details



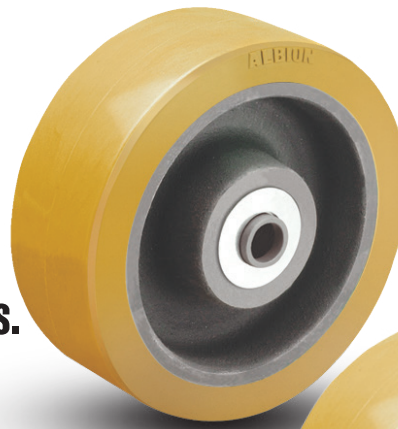
VULKOLLAN®

THE ULTIMATE ELASTOMER

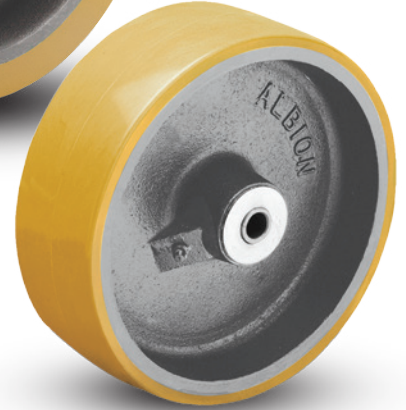


We are one of the very few companies licensed to produce Vulkollan Polyurethane Raw Materials.

Now the highest quality polyurethane in the world is available from the highest quality caster company in the world. Beware of imitators; competitors will produce knockoff wheels that look like Vulkollan®, but do not match its performance. Albion guarantees authentic Vulkollan®. If you are looking for unmatched performance and legendary durability, look to Albion – your source for the best polyurethane wheels in the world.



Thick Tread VX



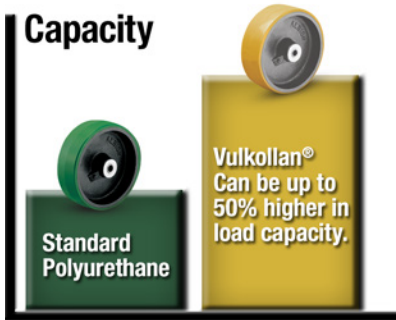
Standard Tread VY

FEATURES

The Vulkollan® raw materials are superior and the processes take longer, but as you can see from the features, some things are worth waiting for:

- Superior tear resistance
- Superior rebound resilience
- Superior ozone, grease and oils resistance
- Superior dynamic load capacity
- Superior reliability
- Superior wear resistance
- Superior structural strength
- Low permanent deformation
- Reduced downtime and maintenance costs
- Bottom line: wheel may last 40% longer than most polyurethane wheels especially in extreme conditions

Capacity



Product Life



Tear Resistance



APPLICATIONS



VY



Ergonomic



Premium Quality



Towing[^]

Vulkollan[®]

on Cast Iron

Made in the USA



Vulkollan are the highest quality polyurethane wheels with unmatched performance and durability.

FEATURES

- **Thickness:** 1/2" thick polyurethane tread
- **Wheel Face:** Tapered 3° Crown
- **Finish:** Orange/Brown tread on cast iron core
- **Hardness:** 95 Shore A
- **Temperature Range:** -40°F to +180°F

WHEEL OPTIONS

- Note: Select bearings featured are recommended for standard applications. For special applications or alternate bearings consult factory. See bearing information on page 13
- For customization & special application options, please consult factory

Note: Vulkollan is a registered trademark of Bayer MaterialScience

Vulkollan Value Quotient:

- Highest Quality Polyurethane in the World
- Extremely Durable
- High Load Capacity
- Ergonomic - Easy to Roll
- High Abrasion Resistance



Depending on diameter and tread width, cores may be spoked, solid

Wheel Diameter (Inches)	Tread Width (Inches)	Capacity (Lbs) (Based on manual operation)	Hub Length (Inches)	Bore ID (Inches)	Bearing ID (Inches)	Approx. Wt. (Lbs)	Wheel Number Roller Bearing (01,05)	Wheel Number Tapered Bearing (09)	Wheel Number Precision Ball (28)
Vulkollan on Cast Iron									
4	2	1100	2-3/16	1-3/16	1/2	5	VY0420112		
5	2	1400	2-3/16	1-3/16	1/2	6			VY0522808
5	2	1400	2-3/16	1-3/16	3/4	6	VY0520112		
6	2	1500	2-3/16	1-3/16	1/2	8			VY0622808
6	2	1500	2-3/16	1-3/16	3/4	8	VY0620112		
6	2-1/2	2350	3-1/4	1-15/16	1	10-1/2	VY0640116		
6	2-1/2	2350	3-1/4	1-15/16	1-1/4	10-1/2	VY0640120		
6	2-1/2	2350	2-3/4	1-15/16	1	11	VY0640516		
6	3	3000	3-1/2	2.04	3/4	13-3/4			VY0652812
6	3	3000	3-1/4	1-15/16	1	13-3/4	VY0650116		
6	3	3000	3-1/4	1-15/16	1-1/4	13-3/4	VY0650120		
6	3	3000	3-1/2	1-15/16	3/4	13-1/4		VY0650912	
6	3	3000	3-1/2	1.98	1	13-1/4		VY0650916	
8	2	2000	2-3/16	1-3/16	1/2	9			VY0822808
8	2	2000	2-3/16	1-3/16	3/4	9	VY0820112		
8	2-1/2	2900	3-1/4	1-15/16	1	13	VY0840116		
8	2-1/2	2900	3-1/4	1-15/16	1-1/4	13	VY0840120		
8	2-1/2	2900	2-3/4	1-15/16	1	13	VY0840516		
8	3	4000	3-1/2	2.04	3/4	16			VY0852812
8	3	4000	3-1/2	2-7/16	25mm	16			VY0852816
8	3	4000	3-1/4	1-15/16	1	16	VY0850116		
8	3	4000	3-1/4	1-15/16	1-1/4	16	VY0850120		
8	3	4000	3-1/2	1-15/16	3/4	15-3/4		VY0850912	
8	3	4000	3-1/2	1.98	1	15-3/4		VY0850916	
8	3	4000	3-1/2	2.33	1-1/4	15-3/4		VY0850920	
8	4	5050	4-1/4	2-7/16	1-1/4	23-3/4	VY0870120		
8	4	5050	4-1/2	2-7/16	1	22-1/2		VY0870916	
8	4	5050	4-1/2	2-7/16	1-1/4	22-1/2		VY0870920	
10	2-1/2	3450	3-1/4	1-15/16	1	17-1/4	VY1040116		
10	2-1/2	3450	3-1/4	1-15/16	1-1/4	17-1/4	VY1040120		
10	2-1/2	3450	2-3/4	1-15/16	1	17-1/2	VY1040516		
10	3	5000	3-1/2	2.04	3/4	20-1/2			VY1052812
10	3	5000	3-1/2	2-7/16	25mm	20-1/2			VY1052816
10	3	5000	3-1/4	1-15/16	1	20-1/2	VY1050116		
10	3	5000	3-1/4	1-15/16	1-1/4	20-1/2	VY1050120		
10	3	5000	3-1/2	1-15/16	3/4	20		VY1050912	
10	3	5000	3-1/2	1.98	1	20		VY1050916	
10	3	5000	3-1/2	2.33	1-1/4	20		VY1050920	
10	4	6050	4-1/4	2-7/16	1-1/4	30-1/4	VY1070120		
10	4	6050	4-1/2	2-7/16	1	29		VY1070916	
10	4	6050	4-1/2	2-7/16	1-1/4	29		VY1070920	
12	3	5300	3-1/4	1-15/16	1	28-1/4	VY1250116		
12	3	5300	3-1/4	1-15/16	1-1/4	28-1/4	VY1250120		
12	3	5300	3-1/2	1-15/16	3/4	28		VY1250912	
12	3	5300	3-1/2	1.98	1	28		VY1250916	
12	3	5300	3-1/2	2.33	1-1/4	28		VY1250920	
12	4	6925	4-1/4	2-7/16	1-1/4	36-3/4	VY1270120		
12	4	6925	4-1/2	2-7/16	1	35-1/2		VY1270916	
12	4	6925	4-1/2	2-7/16	1-1/4	35-1/2		VY1270920	

IMPORTANT: The color of Vulkollan will change over time and exposure to UV rays from an off-white to a very dark brown.

VULKOLLAN[®] MODELS • UP TO 6925

[^]Towing: Consult factory prior to ordering to ensure selection supports your towing requirement



Ergonomic



Premium Quality



Towing[^]

Thick Tread Vulkollan® on Cast Iron

Made in the USA

Vulkollan are the highest quality polyurethane wheels with unmatched performance and durability.

FEATURES

- **Thickness:** 1" thick polyurethane tread
- **Wheel Face:** Flat
- **Finish:** Orange/Brown tread on cast iron core
- **Hardness:** 95 Shore A
- **Temperature Range:** -40°F to +180°F

WHEEL OPTIONS

- Note: Select bearings featured are recommended for standard applications. For special applications or alternate bearings consult factory. See bearing information on page 13
- For customization & special application options, please consult factory

Note: Vulkollan is a registered trademark of Bayer MaterialScience

Vulkollan Value Quotient:

- Highest Quality Polyurethane in the World
- Extremely Durable
- High Load Capacity
- Ergonomic - Easy to Roll
- High Abrasion Resistance

Wheel Diameter (Inches)	Tread Width (Inches)	Capacity (Lbs) (Based on manual operation)	Hub Length (Inches)	Bore ID (Inches)	Bearing ID (Inches)	Approx. Wt. (Lbs)	Wheel Number Roller Bearing (01,05)	Wheel Number Tapered Bearing (09)	Wheel Number Precision Ball (28) Pedestal Precision Ball (29)
Thick Tread Vulkollan on Cast Iron									
6	2-1/2	2350	3-1/4	1-15/16	1	10-1/2	VX0640116		
6	2-1/2	2350	3-1/4	1-15/16	1-1/4	10-1/2	VX0640120		
6	2-1/2	2350	2-3/4	1-15/16	1	11	VX0640516		
6	3	3000	3-1/2	2.04	3/4	13-3/4			VX0652812
6	3	3000	3-1/2	2.04	3/4	13-3/4			VX0652912
6	3	3000	3-1/4	1-15/16	1	13-3/4	VX0650116		
6	3	3000	3-1/4	1-15/16	1-1/4	13-3/4	VX0650120		
6	3	3000	3-1/2	1-15/16	3/4	13-1/4		VX0650912	
6	3	3000	3-1/2	1.98	1	13-1/4		VX0650916	
8	2-1/2	2900	3-1/4	1-15/16	1	13	VX0840116		
8	2-1/2	2900	3-1/4	1-15/16	1-1/4	13	VX0840120		
8	2-1/2	2900	2-3/4	1-15/16	1	13	VX0840516		
8	3	4000	3-1/2	2.04	3/4	16			VX0852812
8	3	4000	3-1/2	2.04	3/4	16			VX0852912
8	3	4000	3-1/4	1-15/16	1	16	VX0850116		
8	3	4000	3-1/4	1-15/16	1-1/4	16	VX0850120		
8	3	4000	3-1/2	1-15/16	3/4	15-3/4		VX0850912	
8	3	4000	3-1/2	1.98	1	15-3/4		VX0850916	
8	3	4000	3-1/2	2.33	1-1/4	15-3/4		VX0850920	
10	2-1/2	3450	3-1/4	1-15/16	1	17-1/4	VX1040116		
10	2-1/2	3450	3-1/4	1-15/16	1-1/4	17-1/4	VX1040120		
10	2-1/2	3450	2-3/4	1-15/16	1	17-1/2	VX1040516		
10	3	5000	3-1/2	2.04	3/4	20-1/2			VX1052812
10	3	5000	3-1/2	2.04	3/4	20-1/2			VX1052912
10	3	5000	3-1/4	1-15/16	1	20-1/2	VX1050116		
10	3	5000	3-1/4	1-15/16	1-1/4	20-1/2	VX1050120		
10	3	5000	3-1/2	1-15/16	3/4	20		VX1050912	
10	3	5000	3-1/2	1.98	1	20		VX1050916	
10	3	5000	3-1/2	2.33	1-1/4	20		VX1050920	

IMPORTANT: The color of Vulkollan will change over time and exposure to UV rays from an off-white to a very dark brown.

PY/PH



Polyurethane on Cast Iron Core



Made in the USA

These wheels are composed of a polyurethane elastomer, open cast on clean, close tolerance cores. Polyurethane tread is chemically bonded to a cast iron core. High capacity polyurethane protects floors, is non-marking and delivers quieter operation than standard metal wheels.

FEATURES

- **Thickness:** 1/2" thick polyurethane tread
- **Wheel Face:** Available in flat or 3° crown
- **Hardness:** 95 Shore A
- **Finish:** Green tread on black core
- **Temperature Range:** -40°F to +180°F

WHEEL OPTIONS

- **80 Shore A** durometer option available (20% capacity reduction) Red-orange tread on light grey core
- **70 Shore D** durometer option available (20% capacity increase) Black tread on black core
- Note: Select bearings featured are recommended for standard applications. For special applications or alternate bearings consult factory. See bearing information on page 13
- For customization & special application options, please consult factory
- Tapered bearings or precision ball bearings are recommended for towing applications

Depending on size, cores may be spoked or solid.

70 Shore D Models

Capacity increases 20% for 70 Shore D durometer models (To order, add 70D to end of wheel number)



Ergonomic Option 80 Shore A Models

Capacity decreases 20% for 80 Shore A durometer models (To order, add 80A to end of wheel number)

Wheel Diameter (Inches)	Tread Width (Inches)	95A Capacity (Lbs) (Rated for normal operation)	80A Capacity (Lbs) (Rated for normal operation)	70D Capacity (Lbs) (Rated for normal operation)	Hub Length (Inches)	Bore ID (Inches)	Bearing ID (Inches)	Approx. Wk. (Lbs)	Wheel Num. Roller Brg. (01,05,07)	Wheel Number Tapered Bearing (09)	Wheel Number Precision Ball (28)
-------------------------	----------------------	---	---	---	---------------------	------------------	---------------------	-------------------	-----------------------------------	-----------------------------------	----------------------------------



Polyurethane on Cast Iron Core (PY, PH)											
3-1/4	1-5/8	420	330	500	1-5/8	1-3/16	1/2	1	PY0310108		
3-1/4	1-5/8	420	330	500	1-5/8	1-3/16	5/8	1	PY0310110		
3-1/4	1-5/8	420	330	500	1-5/8	1-3/16	3/4	1	PY0310112		
3-1/4	2-3/16	540	430	640	2-3/16	1-3/16	1/2	1-1/4	PY0320108		
3-1/4	2-3/16	540	430	640	2-3/16	1-3/16	5/8	1-1/4	PY0320110		
3-1/4	2-3/16	540	430	640	2-3/16	1-3/16	3/4	1-1/4	PY0320112		
3-1/4	3-1/4	850	680	1020	3-1/4	1-15/16	1	3	PY0350116		
3-1/4	3-1/4	850	680	1020	3-1/4	1-15/16	1-1/4	3	PY0350120		
3-1/4	4-1/4	1100	880	1320	4-1/4	1-15/16	1	3-3/4	PY0370116		
3-1/4	4-1/4	1100	880	1320	4-1/4	1-15/16	1-1/4	3-3/4	PY0370120		
3-1/4	4-1/4	1100	880	1320	4-1/2	1-15/16	3/4	3-3/4		PY0370912	
4	2	750	600	900	2-3/16	1-3/16	1/2		PY0420112		
5	2	1050	840	1250	2-3/16	1-3/16	1/2		PY0520112		
5	2-1/2	1300	1050	1500	2-3/4	1-15/16	1	8	PY0540516		PY0522808~
5	2-1/2	1300	1050	1500	3-1/4	1-15/16	1	8-1/2	PY0540116		
5	2-1/2	1300	1050	1500	3-1/4	1-15/16	1-1/4	8-1/2	PY0540120		
5	3	1500	1220	1750	3-1/4	1-15/16	1	9	PY0550116		
5	3	1500	1220	1750	3-1/4	1-15/16	1-1/4	9	PY0550120		
5	3	1500	1220	1750	3-1/2	1-15/16	3/4	8-1/2		PY0550912	
6	2	1200	960	1440	2-3/16	1-3/16	1/2		PY0620112		PY0622808~^
6	1-1/2	840	670	1000	1-5/8	1-3/16	1/2	4	PY0610108		
6	1-1/2	840	670	1000	1-5/8	1-3/16	5/8	4	PY0610110		
6	1-1/2	840	670	1000	1-5/8	1-3/16	3/4	4	PY0610112		
6	2	1200	960	1440	2-3/16	1-7/16	7/8	6	PH0620114		
6	2	1200	960	1440	2-3/16	1-7/16	1	6	PH0620116		
6	2-1/2	1600	1300	1900	2-3/4	1-3/16	3/4	6-3/4	PY0640712		
6	2-1/2	1600	1300	1900	2-3/4	1-15/16	1	11	PY0640516		
6	2-1/2	1600	1300	1900	3-1/4	1-15/16	1	10-1/2	PY0640116		
6	2-1/2	1600	1300	1900	3-1/4	1-15/16	1-1/4	10-1/2	PY0640120		
6	2-1/2	1600	1300	1900	3-1/2	1-15/16	3/4	10-1/2		PY0640912	
6	3	2000	1600	2350	3-1/4	1-15/16	1	13-3/4	PY0650116		
6	3	2000	1600	2350	3-1/4	1-15/16	1-1/4	13-3/4	PY0650120		
6	3	2000	1600	2350	3-1/2	1-15/16	3/4	13-1/4		PY0650912	
6	3	2000	1600	2350	3-1/2	1.98	1	13-1/4		PY0650916	
8	2	1500	1200	1750	2-3/16	1-3/16	1/2		PY0820112		PY0822808~
8	2-1/2	2000	1600	2400	3-1/4	1-15/16	1	13	PY0840116		
8	2-1/2	2000	1600	2400	3-1/4	1-15/16	1-1/4	13	PY0840120		
8	2-1/2	2000	1600	2400	2-3/4	1-15/16	1	13	PY0840516		
8	2-1/2	2000	1600	2400	2-3/4	1-3/16	3/4	9-3/4	PY0840712		
8	2-1/2	2000	1600	2400	3-1/2	1-15/16	3/4	12-3/4		PY0840912	
8	3	2500	2000	3000	3-1/4	1-15/16	1	16	PY0850116		
8	3	2500	2000	3000	3-1/4	1-15/16	1-1/4	16	PY0850120		
8	3	2500	2000	3000	3-1/2	1-15/16	3/4	15-3/4		PY0850912	
8	3	2500	2000	3000	3-1/2	1.98	1	15-3/4		PY0850916	
8	3	2500	2000	3000	3-1/2	2.33	1-1/4	15-3/4		PY0850920	
8	3	2500	2000	3000	3-1/4	2-7/16	1-1/4	15-1/2	PH0850120		
8	3	2500	2000	3000	3-1/4	2-7/16	1-1/2	15-1/2	PH0850124		
8	4	3800	3000	4300	4-1/4	2-7/16	1-1/4	23-3/4	PY0870120		
8	4	3800	3000	4300	4-1/4	2-7/16	1-1/2	23-3/4	PY0870124		
8	4	3800	3000	4300	4-1/2	2-7/16	1	22-1/2		PY0870916	
8	4	3800	3000	4300	4-1/2	2-7/16	1-1/4	22-1/2		PY0870920	
10	2-1/2	2300	1840	2760	3-1/4	1-15/16	1	17-1/4	PY1040116		
10	2-1/2	2300	1840	2760	3-1/4	1-15/16	1-1/4	17-1/4	PY1040120		
10	2-1/2	2300	1840	2760	2-3/4	1-15/16	1	17-1/2	PY1040516		
10	3	3000	2400	3600	3-1/4	1-15/16	1	20-1/2	PY1050116		
10	3	3000	2400	3600	3-1/4	1-15/16	1-1/4	20-1/2	PY1050120		
10	3	3000	2400	3600	3-1/2	1-15/16	3/4	20		PY1050912	

~ Pedestal Precision Ball (29) bearings also available. To order change "28" to "29". Example: PY0522908

^ Bearing ID is 3/4" for these models with Precision Ball bearings

PY/PH

PY/PH Continued



See previous page for PY/PH description and product details.



Depending on diameter and tread width, cores may be spoked, solid spoked or solid.

Wheel Diameter (Inches)	Tread Width (Inches)	95A Capacity (Lbs) (Rated for manual operation)	80A Capacity (Lbs) (Rated for manual operation)	70D Capacity (Lbs) (Rated for manual operation)	Hub Length (Inches)	Bore ID (Inches)	Bearing ID (Inches)	Approx. Wt. (Lbs)	Wheel Num. Roller Brg. (01,05,07)	Wheel Number Tapered Bearing (09)	Wheel Number Precision Ball (28)
-----------------------------------	--------------------------------	---	---	---	-------------------------------	----------------------------	-------------------------------	-----------------------------	---	---	--

Polyurethane on Cast Iron Core (PY, PH)

10	3	3000	2400	3600	3-1/2	1.98	1	20		PY1050916	
10	3	3000	2400	3600	3-1/2	2.33	1-1/4	20		PY1050920	PY1052812~^
10	3	3000	2400	3600	3-1/4	2-7/16	1-1/4	19-3/4	PH1050120		
10	3	3000	2400	3600	3-1/4	2-7/16	1-1/2	19-3/4	PH1050124		
10	4	4200	3350	5000	4-1/4	2-7/16	1-1/4	30-1/4	PY1070120		
10	4	4200	3350	5000	4-1/4	2-7/16	1-1/2	30-1/4	PY1070124		
10	4	4200	3350	5000	4-1/2	2-7/16	1	29		PY1070916	
10	4	4200	3350	5000	4-1/2	2-7/16	1-1/4	29		PY1070920	
10	5	5000	4000	6000	5-1/4	2-7/16	1-1/4	41-1/4	PY1080120		
10	5	5000	4000	6000	5-1/4	2-7/16	1-1/2	41-1/4	PY1080124		
10	5	5000	4000	6000	5-1/2	2-7/16	1	39-1/4		PY1080916	
10	5	5000	4000	6000	5-1/2	2-7/16	1-1/4	39-1/4		PY1080920	
12	2-1/2	2700	2160	3240	3-1/4	1-15/16	1	22-3/4	PY1240116		
12	2-1/2	2700	2160	3240	3-1/4	1-15/16	1-1/4	22-3/4	PY1240120		
12	2-1/2	2700	2160	3240	2-3/4	1-15/16	1	22	PY1240516		
12	3	3500	2800	4200	3-1/4	1-15/16	1	28-1/4	PY1250116		
12	3	3500	2800	4200	3-1/4	1-15/16	1-1/4	28-1/4	PY1250120		
12	3	3500	2800	4200	3-1/2	1-15/16	3/4	28		PY1250912	
12	3	3500	2800	4200	3-1/2	1.98	1	28		PY1250916	
12	3	3500	2800	4200	3-1/2	2.33	1-1/4	28		PY1250920	
12	3	3500	2800	4200	3-1/4	2-7/16	1-1/4	27-1/2	PH1250120		
12	3	3500	2800	4200	3-1/4	2-7/16	1-1/2	27-1/2	PH1250124		
12	3-1/2	4110	3280	4900	4-1/4	2-7/16	1-1/4	31-1/2	PY1260120		
12	3-1/2	4110	3280	4900	4-1/4	2-7/16	1-1/2	31-1/2	PY1260124		
12	3-1/2	4110	3280	4900	4-1/2	2-7/16	1	30-1/2		PY1260916	
12	3-1/2	4110	3280	4900	4-1/2	2-7/16	1-1/4	30-1/2		PY1260920	
12	4	4800	3840	5760	4-1/4	2-7/16	1-1/4	36-3/4	PY1270120		
12	4	4800	3840	5760	4-1/4	2-7/16	1-1/2	36-3/4	PY1270124		
12	4	4800	3840	5760	4-1/2	2-7/16	1	35-1/2		PY1270916	
12	4	4800	3840	5760	4-1/2	2-7/16	1-1/4	35-1/2		PY1270920	
12	5	6000	4800	7200	5-1/4	2-7/16	1-1/4	48	PY1280120		
12	5	6000	4800	7200	5-1/4	2-7/16	1-1/2	48	PY1280124		
12	5	6000	4800	7200	5-1/2	2-7/16	1	47		PY1280916	
12	5	6000	4800	7200	5-1/2	2-7/16	1-1/4	47		PY1280920	
14	4	5000	4000	6000	4-1/4	2-7/16	1-1/4	48-1/2	PY1470120		
14	4	5000	4000	6000	4-1/4	2-7/16	1-1/2	48-1/2	PY1470124		
14	4	5000	4000	6000	4-1/2	2-7/16	1	47-1/2		PY1470916	
14	4	5000	4000	6000	4-1/2	2-7/16	1-1/4	47-1/2		PY1470920	
16	3	4260	3400	5100	4-1/4	2-7/16	1-1/4	51	PY1650120		
16	3	4260	3400	5100	4-1/4	2-7/16	1-1/2	51	PY1650124		
16	3	4260	3400	5100	4-1/2	2-7/16	1	49-3/4		PY1650916	
16	3	4260	3400	5100	4-1/2	2-7/16	1-1/4	49-3/4		PY1650920	
16	4	5970	4770	7160	5-1/4	2-7/16	1-1/4	65	PY1670120		
16	4	5970	4770	7160	5-1/4	2-7/16	1-1/2	65	PY1670124		
16	4	5970	4770	7160	5-1/4	3-1/16	1-3/4	65	PY1670128		
16	4	5970	4770	7160	5-1/2	2-7/16	1-1/4	63		PY1670920	
16	5	7700	6160	9240	5-1/4	2-7/16	1-1/4	100	PY1680120		
16	5	7700	6160	9240	5-1/4	2-7/16	1-1/2	100	PY1680124		
16	5	7700	6160	9240	5-1/4	3-1/16	1-3/4	100	PY1680128		
16	5	7700	6160	9240	5-1/4	3-1/4	2	100	PY1680132		
16	5	7700	6160	9240	5-1/2	2-7/16	1-1/4	100		PY1680920	
18	3	4600	3680	5520	4-1/4	2-7/16	1-1/4	59	PY1850120		
18	3	4600	3680	5520	4-1/4		1-1/2	59	PY1850124		
18	3	4600	3680	5520	4-1/2	2-7/16	1-1/4	57-3/4		PY1850920	
18	4	6500	5200	7800	5-1/4	2-7/16	1-1/4	83	PY1870120		
18	4	6500	5200	7800	5-1/4		1-1/2	83	PY1870124		
18	4	6500	5200	7800	5-1/2	2-7/16	1-1/4	81-3/4		PY1870920	
18	5	8400	6720	10080	5-1/4	2-7/16	1-1/2	89	PY1880124		
18	5	8400	6720	10080	5-1/4	3-1/16	1-3/4	89	PY1880128		
18	5	8400	6720	10080	5-1/4	3-1/4	2	89	PY1880132		
18	5	8400	6720	10080	5-1/2	2-9/16	1-1/2	87-3/4		PY1880924	

PX Thick Tread Polyurethane on Cast Iron Core

Premium Quality

Towing[^]



Made in the USA

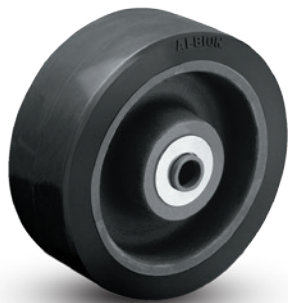
PX wheels are composed of a polyurethane elastomer, open cast on clean, precision tolerance cores. Polyurethane tread is chemically bonded to a cast iron core. High capacity polyurethane protects floors, is non-marking and delivers quieter operation than standard metal wheels.

FEATURES

- **Thickness:** 1" thick polyurethane tread
- **Wheel Face:** Available in flat or 3° crown
- **Hardness:** 95 Shore A
- **Finish:** Green tread on black core
- **Temperature Range:** -40°F to +180°F

WHEEL OPTIONS

- **80 Shore A** durometer option available (20% capacity reduction). Provides more debris resistance. Red-orange on black core
- **70 Shore D** durometer option available (20% capacity increase). Black tread on black core.
- **Note:** Select bearings featured are recommended for standard applications. For special applications or alternate bearings consult factory. See bearing information on page 13
- For customization & special application options, please consult factory
- Tapered bearings are recommended for towing applications



70 Shore D Models
Capacity increases 20% for 70 Shore D durometer models
(To order, add 70D to end of wheel number)



Ergonomic Option 80 Shore A Models
Capacity decreases 20% for 80 Shore A durometer models
(To order, add 80A to end of wheel number)

Wheel Diameter (Inches)	Tread Width (Inches)	Capacity (Lbs) (Rate for manual operation)	Hub Length (Inches)	Bore ID (Inches)	Bearing ID (Inches)	Approx. Wt. (Lbs)	Wheel Number Roller Bearing (01)	Wheel Number Tapered Roller Bearing (09)
6	3	2250	3-1/4	1-15/16	1	13-3/4	PX0650116	
6	3	2250	3-1/4	1-15/16	1-1/4	13-3/4	PX0650120	
6	3	2250	3-1/2	1-15/16	3/4	13-1/4		PX0650912
6	3	2250	3-1/2	1.98	1	13-1/4		PX0650916
8	2-1/2	2200	3-1/4	1-15/16	1	13	PX0840116	
8	2-1/2	2200	3-1/4	1-15/16	1-1/4	13	PX0840120	
8	2-1/2	2200	3-1/2	1-15/16	3/4	12-3/4		PX0840912
8	3	2780	3-1/4	1-15/16	1	16	PX0850116	
8	3	2780	3-1/4	1-15/16	1-1/4	16	PX0850120	
8	3	2780	3-1/2	1-15/16	3/4	15-3/4		PX0850912
8	3	2780	3-1/2	1.98	1	15-3/4		PX0850916
8	4	3850	4-1/4	2-7/16	1-1/4	23-3/4	PX0870120	
8	4	3850	4-1/4	2-7/16	1-1/2	23-3/4	PX0870124	
8	4	3850	4-1/2	2-7/16	1	22-1/2		PX0870916
8	4	3850	4-1/2	2-7/16	1-1/4	22-1/2		PX0870920
10	2-1/2	2600	3-1/4	1-15/16	1	17-1/4	PX1040116	
10	2-1/2	2600	3-1/4	1-15/16	1-1/4	17-1/4	PX1040120	
10	3	3300	3-1/4	1-15/16	1	20-1/2	PX1050116	
10	3	3300	3-1/4	1-15/16	1-1/4	20-1/2	PX1050120	
10	3	3300	3-1/2	1-15/16	3/4	20		PX1050912
10	3	3300	3-1/2	1.98	1	20		PX1050916
10	3	3300	3-1/2	2.33	1-1/4	20		PX1050920
10	4	4620	4-1/4	2-7/16	1-1/4	30-1/4	PX1070120	
10	4	4620	4-1/4	2-7/16	1-1/2	30-1/4	PX1070124	
10	4	4620	4-1/2	2-7/16	1	29		PX1070916
10	4	4620	4-1/2	2-7/16	1-1/4	29		PX1070920
10	5	5500	5-1/4	2-7/16	1-1/4	41-1/4	PX1080120	
10	5	5500	5-1/4	2-7/16	1-1/2	41-1/4	PX1080124	
10	5	5500	5-1/2	2-7/16	1	39-1/4		PX1080916
10	5	5500	5-1/2	2-7/16	1-1/4	39-1/4		PX1080920
12	3	3760	3-1/4	1-15/16	1	28-1/4	PX1250116	
12	3	3760	3-1/4	1-15/16	1-1/4	28-1/4	PX1250120	
12	3	3760	3-1/2	1-15/16	3/4	28		PX1250912
12	3	3760	3-1/2	1.98	1	28		PX1250916
12	3	3760	3-1/2	2.33	1-1/4	28		PX1250920
12	4	5280	4-1/4	2-7/16	1-1/4	36-3/4	PX1270120	
12	4	5280	4-1/4	2-7/16	1-1/2	36-3/4	PX1270124	
12	4	5280	4-1/2	2-7/16	1	35-1/2		PX1270916
12	4	5280	4-1/2	2-7/16	1-1/4	35-1/2		PX1270920
12	5	6600	5-1/4	2-7/16	1-1/4	48	PX1280120	
12	5	6600	5-1/4	2-7/16	1-1/2	48	PX1280124	
12	5	6600	5-1/2	2-7/16	1	47		PX1280916
12	5	6600	5-1/2	2-7/16	1-1/4	47		PX1280920
12	6	8250	6-1/2	2.33	1-1/4	25-3/4		PX1290920
16	3	4680	4-1/4	2-7/16	1-1/4	51	PX1650120	
16	3	4680	4-1/4	2-7/16	1-1/2	51	PX1650124	
16	3	4680	4-1/2	2-7/16	1	49-3/4		PX1650916
16	3	4680	4-1/2	2-7/16	1-1/4	49-3/4		PX1650920
16	4	6570	4-1/4	2-7/16	1-1/4	65	PX1670120	
16	4	6570	4-1/4	2-7/16	1-1/2	65	PX1670124	
16	4	6570	4-1/2	2-7/16	1-1/4	63		PX1670920
16	5	8470	5-1/4	2-7/16	1-1/4	85	PX1680120	
16	5	8470	5-1/4	2-7/16	1-1/2	85	PX1680124	
16	5	8470	5-1/2	2-7/16	1-1/4	85		PX1680920

POLYURETHANE ON CAST IRON • UP TO 8470

[^]Towing: Consult factory prior to ordering to ensure selection supports your towing requirement

PF



Ergonomic



Maintenance Free



Premium Quality



Towing[^]

Polyurethane on Heavy Duty Cast Iron



Ergonomic polyurethane tread is firmly bonded to precision machined cast iron core and features precision ball bearings for smooth, reliability mobility in both hand operated or towed applications.

FEATURES

- **Hardness:** 95 Shore A
- **Wheel Face:** Radius tread
- **Finish:** Yellow on black core
- **Temperature Range:** -40°F to +180°F

WHEEL OPTIONS

- Note: Select bearings featured are recommended for standard applications. For special applications or alternate bearings consult factory. See bearing information on page 13
- For customization & special application options, please consult factory

Wheel Diameter (Inches)	Tread Width (Inches)	Capacity (Lbs) (Based on manual operation)	Hub Length (Inches)	Bore ID (Inches)	Bearing ID (Inches)	Approx. Wt. (Lbs)	Wheel Number Precision Ball Bearing (28)	Wheel Number Tapered Roller Bearing (09)
Polyurethane on Heavy Duty Cast Iron (PF)								
6	2	2000	2-7/16	47mm	1/2		PF0622808	
6	2-1/2	2900	3	52mm	3/4		PF064281201	
6	2-1/2	2900	3-1/2	52mm	3/4		PF0642812	
8	2	2200	2-7/16	47mm	1/2		PF0822808	
8	2-1/2	3100	3-1/2	52mm	3/4		PF0842812	
8	2-1/2	3100	3	52mm	3/4		PF084281201	
8	3	4000	3-1/2	62mm	3/4		PF0852812	
10	2-1/2	3300	3-1/2	52mm	3/4		PF1042812	
10	2-1/2	3300	3	52mm	3/4		PF104281201	
10	3	4200	3-1/2	62mm	3/4		PF1052812	
10	5	8000	5-1/2	2-7/16"	1-1/4			PF1280920
12	3	4400	3-1/2	62mm	3/4		PF1252812	
12	5	10000	5-1/2	2-7/16"	1-1/4			PF1280920
16	5	10500	5-1/2	2-7/16"	1-1/4			PF1680920

PI



Economical

Polyurethane on Cast Iron



PI wheels are composed of a polyurethane elastomer, open cast or injection molded, on clean, close tolerance cores. Polyurethane tread is chemically bonded to a cast iron core. High capacity polyurethane protects floors, is non-marking and delivers quieter operation than standard metal wheels.

FEATURES

- **Hardness:** 95 Shore A
- **Wheel Face:** Available in flat tread
- **Finish:** Green tread on silver painted core
- **Temperature Range:** -40 °F to +180°F

WHEEL OPTIONS

- Note: Select bearings featured are recommended for standard applications. For special applications or alternate bearings consult factory. See bearing information on page 13
- For customization & special application options, please consult factory

Wheel Diameter (Inches)	Tread Width (Inches)	Capacity (Lbs) (Based on manual operation)	Hub Length (Inches)	Bore ID (Inches)	Bearing ID (Inches)	Approx. Wt. (Lbs)	Wheel Number Roller Bearing (01)	Wheel Number Plain Bearing (00)
Polyurethane on Cast Iron (PI)								
6	2-1/2	1600	2-3/4	1-3/16	3/4			PI0640019
6	2-1/2	1600	3-1/4	1-15/16	1		PI0640116	
6	3	2000	3-1/4	1-15/16	3/4			PI0650031
6	3	2000	3-1/4	1-15/16	1		PI0650116	
8	2-1/2	2000	3-1/4	1-15/16	3/4			PI0840031
8	2-1/2	2000	3-1/4	1-15/16	1		PI0840116	
8	3	2500	3-1/4	1-15/16	1		PI0850116	
8	3	2500	3-1/4	1-15/16	3/4			PI0850031
10	2-1/2	2200	3-1/4	1-15/16	1		PI1040116	
10	2-1/2	2200	3-1/4	1-15/16	3/4			PI1040031
10	3	3000	3-1/4	1-15/16	1		PI1050116	
10	3	3000	3-1/4	1-15/16	3/4			PI1050031
12	2-1/2	2500	3-1/4	1-15/16	3/4			PI1240031
12	3	3500	3-1/4	1-15/16	1		PI1250116	
12	3	3500	3-1/4	1-15/16	3/4			PI1250031

PR



Premium Quality



Ergonomic



Maintenance Free

Polyurethane Reactive



This special polyurethane material is resistant to picking up metal chips. Wheels are quiet rolling and provide easy turning.

FEATURES

- **Wheel Face:** Round tread
- **Finish:** Reddish brown tread on black core
- **Temperature Range:** -40°F to +180°F
- **Hardness:** 80 Shore A

WHEEL OPTIONS

- Note: Select bearings featured are recommended for standard applications. For special applications or alternate bearings consult factory. See bearing information on page 13
- For customization & special application options, please consult factory

Wheel Diameter (Inches)	Tread Width (Inches)	Capacity (Lbs) (rated for manual operation)	Hub Length (Inches)	Bore ID (Inches)	Bearing ID (Inches)	Approx. Wt. (Lbs)	Wheel Number Roller Bearing (01)	Wheel Number Precision Ball Bearing (28)
Polyurethane Reactive on Cast Iron (PR)								
10	3	2400	3-1/2	1-15/16	3/4			PR1052812
10	3	2400	3-1/4	1-15/16	1		PR1050116	
12	3	2800	3-1/2	1-15/16	3/4			PR1252812
12	3	2800	3-1/4	1-15/16	1		PR1250116	

PA/PD



Premium Quality

Polyurethane on Aluminum Core



Composed of a polyurethane elastomer, open cast on clean, close tolerance cores. Polyurethane tread is chemically bonded to aluminum core. High capacity polyurethane protects floors, is non-marking and delivers quieter operation than standard metal wheels. PA wheels feature cast aluminum cores. PD wheels feature die cast aluminum cores.

FEATURES

- **Finish:** Green tread on aluminum core
- **Temperature Range:** -40°F to +180°F
- **Hardness:** PA 95 Shore A
PD 60 Shore D

WHEEL OPTIONS

- Note: Select bearings featured are recommended for standard applications. For special applications or alternate bearings consult factory. See bearing information on page 13
- For customization & special application options, please consult factory

Wheel Diameter (Inches)	Tread Width (Inches)	Capacity (Lbs) (rated for manual operation)	Hub Length (Inches)	Bore ID (Inches)	Bearing ID (Inches)	Approx. Wt. (Lbs)	Wheel Number Roller Bearing (01,09)	Wheel Number Precision Ball Bearing (28)
Polyurethane on Aluminum Core (PA, PD)								
4	1-1/2	600	1-5/8	1-3/16	1/2	1	PD0410108	
4	1-1/2	600	1-5/8	1-3/16	5/8	1	PD0410110	
4	1-1/2 [^]	600	1-5/8	1-3/16	3/4	1	PD0410112~	
4	2	700	2-3/16	1-3/16	1/2	1-1/2	PD0420108	
4	2	700	2-3/16	1-3/16	5/8	1-1/2	PD0420110	
4	2	700	2-3/16	1-3/16	3/4	1-1/2	PD0420112~	
4	3-1/4	1200	3-1/4	1-15/16	1	3-1/4	PA0450116	
4	3-1/4	1200	3-1/4	1-15/16	1-1/4	3-1/4	PA0450120	
4	4-1/4	1600	4-1/4	1-15/16	1	4-1/4	PA0470116	
4	4-1/4	1600	4-1/4	1-15/16	1-1/4	4-1/4	PA0470120	
5	1-1/2	720	1-5/8	1-3/16	1/2	1-1/2	PD0510108	
5	1-1/2	720	1-5/8	1-3/16	5/8	1-1/2	PD0510110	
5	1-1/2 [^]	720	1-5/8	1-3/16	3/4	1-1/2	PD0510112~	
5	2	1050	2-3/16	1-3/16	1/2	1-3/4	PD0520108	
5	2	1050	2-3/16	1-3/16	5/8	1-3/4	PD0520110	
5	2	1050	2-3/16	1-3/16	3/4	1-3/4	PD0520112	
6	2	1230	2-3/16	1-3/16	1/2	2-1/4	PD0620108	
6	2	1230	2-3/16	1-3/16	5/8	2-1/4	PD0620110	
6	2	1230	2-3/16	1-3/16	3/4	2-1/4	PD0620112~	
8	2	1500	2-3/16	1-3/16	1/2	3-1/4	PD0820108	
8	2	1500	2-3/16	1-3/16	5/8	3-1/4	PD0820110	
8	2	1500	2-3/16	1-3/16	3/4	3-1/4	PD0820112~	
8	2-1/2	2010	3-1/4	1-15/16	1	4	PD0840116	
8	2-1/2	2010	3-1/2	2	3/4	4		PD0842812
8	3	2520	3-1/4	1-15/16	1	4-1/4	PD0850116	
8	3	2520	3-1/4	1-15/16	1-1/4	4-1/4	PD0850120	
8	3	2520	3-1/2	2	3/4	4-1/4		PD0852812
10	2-1/2	2370	3-1/4	1-15/16	1	4-3/4	PD1040116	
10	2-1/2	2370	3-1/2	2	3/4	4-3/4		PD1042812
10	3	3000	3-1/4	1-15/16	1	5	PD1050116	
10	3	3000	3-1/4	1-15/16	1	5	PD1050116	
10	3	3000	3-1/4	1-15/16	1-1/4	5	PD1050120	
10	3	3000	3-1/4	1-15/16	3/4	5		PD1052812
12	6	7500	6-1/2	2.33	1-1/4	25-3/4	PA1290920	

~ Wheels are complete with spanner bushing and nylon sealed retaining/thrust washer.
[^] 27/16" spanner and spacers included.

PM Round Tread Polyurethane on Aluminum Core



Ergonomic



Premium Quality



Maintenance Free



95 Shore A Models



80 Shore A Models

Composed of a polyurethane elastomer, open cast on clean, close tolerance cores. Wheels feature a chemical and mechanical lock of tread to the core. High capacity polyurethane protects floors, is non-marking and delivers quieter operation than standard metal wheels.

FEATURES

- **Wheel face:** Round tread
- **Finish:** Green tread on aluminum core
- **Temperature Range:** -40°F to +180°F
- **Hardness:** 95 Shore A (green) or 80 Shore A (butterscotch)
- Wheels are complete with top hat and spacers

WHEEL OPTIONS

- Available in **80 Shore A** consult factory.
- Note: Select bearings featured are recommended for standard applications. For special applications or alternate bearings consult factory. See bearing information on page 13
- For customization & special application options, please consult factory



Tread is mechanically and chemically bonded through a patented process to a lightweight durable aluminum core

Wheel Diameter (inches)	Tread Width (inches)	Capacity (Lbs) (Rating for manual operation)	Hub Length (inches)	Bore ID (inches)	Bearing ID (inches)	Approx. Wt. (Lbs)	Wheel Number Precision Ball (28)
Round Tread Polyurethane on Aluminum Core (PM 95A)							
5	2	1000	2-7/16	1-9/16	1/2	2	PM0522808
6	2	1250	2-7/16	1-9/16	1/2	3	PM0622808
8	2	1500	2-7/16	1-9/16	1/2	4	PM0822808

Wheel Diameter (inches)	Tread Width (inches)	Capacity (Lbs) (Rating for manual operation)	Hub Length (inches)	Bore ID (inches)	Bearing ID (inches)	Approx. Wt. (Lbs)	Wheel Number Precision Ball (28)
Round Tread Polyurethane on Aluminum Core (PM 80A)							
5	2	1000	2-7/16	1-9/16	1/2	2	PM052280880A
6	2	1250	2-7/16	1-9/16	1/2	3	PM062280880A
8	2	1500	2-7/16	1-9/16	1/2	4	PM082280880A

CG-MAX Maximum Efficiency Wheel™



Ergonomic



Maintenance Free



Premium Quality



Towing^



The CG-MAX wheel was designed and formulated to outperform, outlast, and take customer efficiency to the MAX. With best-in-class ergonomics and durability, this versatile polyurethane on aluminum wheel will drive new value into your operations. From improved material flow to safer workplaces, we encourage you to experience the real impact CG-MAX wheels will have on your business today!

- Our most advanced polyurethane wheel
- ANSI:ICWM tested to outlast and outperform the competition
- Best-in-class ergonomics increase user safety and reduce fatigue
- Patent pending self-retaining top hats reduce environmental and assembly waste
- Debris resistant



Wheel Diameter (inches)	Tread Width (inches)	Capacity (Lbs) (Rating for manual operation)	Hub Length (inches)	Bore ID (inches)	Bearing ID (inches)	Approx. Wt. (Lbs)	Wheel Number Precision Ball (28)
CG-MAX Polyurethane on Aluminum Core (Orange)							
4	2	800	2-7/16	1-9/16	1/2	1-1/2	AN0422808MAX
5	2	1000	2-7/16	1-9/16	1/2	2	AN0522808MAX
6	2	1250	2-7/16	1-9/16	1/2	3	AN0622808MAX
8	2	1500	2-7/16	1-9/16	1/2	4	AN0822808MAX

Wheel Diameter (inches)	Tread Width (inches)	Capacity (Lbs) (Rating for manual operation)	Hub Length (inches)	Bore ID (inches)	Bearing ID (inches)	Approx. Wt. (Lbs)	Wheel Number Precision Ball (28)
CG-MAX Polyurethane on Aluminum Core (Maroon)							
4	2	800	2-7/16	1-9/16	1/2	1-1/2	AX0422808MAX
5	2	1000	2-7/16	1-9/16	1/2	2	AX0522808MAX
6	2	1250	2-7/16	1-9/16	1/2	3	AX0622808MAX
8	2	1500	2-7/16	1-9/16	1/2	4	AX0822808MAX

FEATURES

- **Wheel face:** Round tread
- **Finish:** Orange or Maroon on aluminum core
- **Temperature Range:** -40°F to +180°F
- **Hardness:** 85 Shore A
- Wheels feature patent pending top hats



Patent Pending Top Hats Reduce Waste



Tread is mechanically and chemically bonded through a patented process to a lightweight durable aluminum core

Visit albioncasters.com/CG-MAX for additional information and CAD models.

^Towing: Consult factory prior to ordering to ensure selection supports your towing requirement

UA



Ergonomic



Premium Quality



Maintenance Free



Towing[^]

Magnum Round Tread Polyurethane on Aluminum Core



Made in the USA

Magnum polyurethane wheels are designed to meet today's most stringent ergonomic needs. These premium polyurethane wheels are standard with crowned treads, sealed precision ball bearings and top hat reducing bushings for optimum rollability. Magnum wheels will perform well in both manual and power-towed material handling applications.

FEATURES

- **Wheel face:** Round tread
- **Finish:** Blue, Red, Orange or Black on Aluminum
- **Temperature Range:** -40°F to +180°F
- **Hardness:** Standard blue 95 Shore A
- Wheels are complete with top hat and spacers

WHEEL OPTIONS

- Note: Select bearings featured are recommended for standard applications. For special applications or alternate bearings consult factory. See bearing information on page 13
- For customization & special application options, please consult factory



95 Shore A



80 Shore A



73 Shore D



70 Shore A

Wheel Diameter (Inches)	Tread Width (Inches)	Capacity (Lbs) (Rate for manual operation)	Hub Length (Inches)	Bore ID (Inches)	Bearing ID (Inches)	Approx. Wt. (Lbs)	Wheel Number Precision Ball (28)
-------------------------	----------------------	--	---------------------	------------------	---------------------	-------------------	----------------------------------

Blue Round Tread Polyurethane on Aluminum Core (UA)							
4	2	700	2-7/16	1-9/16	1/2	2	UA0422808
6	2	750	2-7/16	1-9/16	1/2	3	UA0622808
8	2	900	2-7/16	1-9/16	1/2	4	UA0822808

Red Round Tread Polyurethane on Aluminum Core (UA 80A)							
4	2	500	2-7/16	1-9/16	1/2	2	UA042280880A
6	2	500	2-7/16	1-9/16	1/2	3	UA062280880A
8	2	800	2-7/16	1-9/16	1/2	4	UA082280880A

Orange Round Tread Polyurethane on Aluminum Core (UA 73D)							
4	2	900	2-7/16	1-9/16	1/2	2	UA042280873D
6	2	1000	2-7/16	1-9/16	1/2	3	UA062280873D
8	2	1200	2-7/16	1-9/16	1/2	4	UA082280873D

Black Round Tread Polyurethane on Aluminum Core (UA 70A)							
4	2	400	2-7/16	1-9/16	1/2	2	UA042280870A
6	2	410	2-7/16	1-9/16	1/2	3	UA062280870A
8	2	500	2-7/16	1-9/16	1/2	4	UA082280870A

POLYURETHANE ON ALUMINUM • UP TO 1200

Excellent in automotive manufacturing applications!



[^]Towing: Consult factory prior to ordering to ensure selection supports your towing requirement

EY/EZ



Ergonomic



Maintenance Free

Aubin Industries Swivel-EAZ® Crown/Flat Tread

Made in the USA



Dual wheels give the Swivel-EAZ® extremely high rollability and durability. Capacities range from 500 lbs to 4800 lbs depending on wheel size and durometer. Also available in 70A, 80A, 60D, and 75D. Made in the USA.



FEATURES

- **Wheel face:** Dual wheel crowned tread (EZ) or flat tread (EY)
- **Finish:** Standard Blue on aluminum
- **Temperature Range:** -40°F to +180°F
- **Hardness:** Standard blue 95 Shore A

WHEEL OPTIONS

- Note: Select bearings featured are recommended for standard applications. For special applications or alternate bearings consult factory. See bearing information on page 13
- For other available durometers please consult factory

Wheel Diameter (Inches)	Tread Width (Inches)	Capacity (Lbs) (Based on manual operation)	Hub Length (Inches)	Bore ID (Inches)	Bearing ID (Inches)	Approx. Wt. (Lbs)	Wheel Number Precision Ball (28)
-------------------------	----------------------	--	---------------------	------------------	---------------------	-------------------	----------------------------------

Swivel-EAZ Crowned Tread (EY)							
4	2	675	2-1/2	N/A	1/2		EY0422808
5	2	900	2-1/2	N/A	1/2		EY0522808
6	2	1425	2-1/2	N/A	1/2		EY0622808
6	3	2137	3-1/2	N/A	3/4		EY0652812
8	2	2400	2-1/2	N/A	1/2		EY0822808
8	3	3250	3-1/2	N/A	3/4		EY0852812
10	3	3800	3-1/2	N/A	3/4		EY1052812

Swivel-EAZ Flat Tread (EZ)							
4	2	900	2-1/2	N/A	1/2		EZ0422808
5	2	1400	2-1/2	N/A	1/2		EZ0522808
6	2	1900	2-1/2	N/A	1/2		EZ0622808
6	3	2850	3-1/2	N/A	3/4		EZ0652812
8	2	3000	2-1/2	N/A	1/2		EZ0822808
8	3	4000	3-1/2	N/A	3/4		EZ0852812
10	3	4800	3-1/2	N/A	3/4		EZ1052812

95A durometer is standard; for optional durometers please consult factory.

About Swivel-EAZ®

Swivel-EAZ® By Aubin Industries is a revolutionary rolling system. Available in more than 350 patented sizes and configurations with more being added regularly. The Swivel-EAZ is the "New Standard for Logistics" in the Material Handling Industry.

Durometer Options



70A (Black)



80A (Red)



95A (Blue)



60D (Gray)



75D (Black)

Wheel capacities are lower for 70A and 80A. Consult factory.

Wheel capacities are higher for 60D and 75D. Consult factory.



ALBION[®]

the caster experts

New Proprietary Poured Mold Techniques
for a Smoother, Cleaner Wheel with no Parting Lines

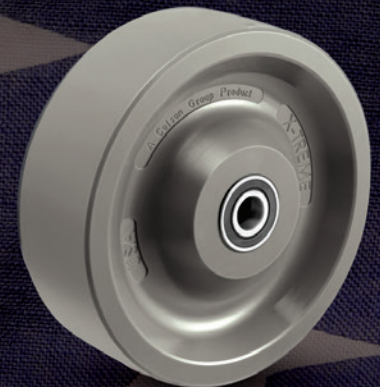
Solid Polyurethane X-treme Wheels



 **USA**
Made in the



X-treme



X-treme Plus

See Page 160

- Specifically designed for applications involving: chemicals, solvents, and water
- Low rolling resistance and crowned tread for ergonomics
- Solid elastomer construction for no tread failures
- Non-marking and floor protective

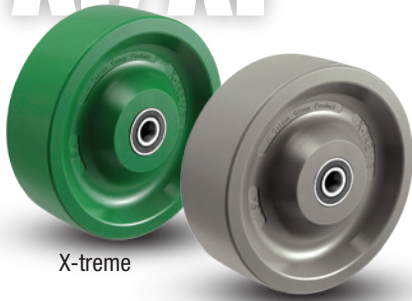


THE GLOBAL LEADER IN CASTERS AND WHEELS.

Made in the **USA**



XI/XP X-Treme Solid Polyurethane



X-treme

X-treme Plus

Albion X-treme and X-treme Plus wheels have been a very popular solid polyurethane choice for years, but now Albion has taken the wheels to a new level. Instead of compression molding, Albion now uses a proprietary poured mold technique that results in a cleaner, smoother looking wheel. These wheels are designed specifically for high-capacity manual applications involving chemicals, solvents or water. X-tremely low rolling resistance and the crowned tread make this wheel your choice for ergonomic applications. One-piece construction affords freedom from tread separation with an exceptionally long life. The solid polyurethane material is non-marking and provides floor protection.

FEATURES

- **Hardness:**
X-treme: 70 Shore D
X-treme Plus: 60 Shore D
- **Wheel face:** Crowned tread
- **Finish:**
X-treme: Green
X-treme Plus: Grey
- **Temperature Range:**
Up to +180°F

WHEEL OPTIONS

- Note: Select bearings featured are recommended for standard applications. For special applications or alternate bearings consult factory. See bearing information on page 13
- For customization & special application options, please consult factory

X-Treme Solid Polyurethane (XI)									
Wheel Diameter (Inches)	Tread Width (Inches)	Capacity (Lbs) (Based on manual operation)	Hub Length (Inches)	Bore ID (Inches)	Bearing ID (Inches)	Approx. Wt. (Lbs)	Wheel Number Roller Bearing (01)	Wheel Number Delrin Bearing (51)	Wheel Number Precision Ball (28)*
3-1/4	2	900	2-3/16	1-3/16	3/4	1	XI0320112	XI0325112	
3-1/4	2	900	2-7/16	1-9/16	1/2	1			XI0322808
4	2	1000	2-3/16	1-3/16	3/4	1	XI0420112	XI0425112	
4	2	1000	2-7/16	1-9/16	1/2	1			XI0422808
5	2	1000	2-3/16	1-3/16	3/4	1-1/2	XI0520112	XI0525112	
5	2	1000	2-7/16	1-9/16	1/2	1-1/2			XI0522808
6	2	1000	2-3/16	1-3/16	3/4	1-3/4	XI0620112	XI0625112	
6	2	1000	2-7/16	1-9/16	1/2	1-3/4			XI0622808
8	2	1000	2-3/16	1-3/16	3/4	4	XI0820112	XI0825112	
8	2	1000	2-7/16	1-9/16	1/2	4			XI0822808

X-Treme Plus Solid Polyurethane (XP)									
Wheel Diameter (Inches)	Tread Width (Inches)	Capacity (Lbs) (Based on manual operation)	Hub Length (Inches)	Bore ID (Inches)	Bearing ID (Inches)	Approx. Wt. (Lbs)	Wheel Number Roller Bearing (01)	Wheel Number Delrin Bearing (51)	Wheel Number Precision Ball (28)*
3-1/4"	2	900	2-3/16	1-3/16	3/4	1	XP0320112	XP0325112	
3-1/4"	2	900	2-7/16	1-9/16	1/2	1			XP0322808
4	2	1400	2-3/16	1-3/16	3/4	1	XP0420112	XP0425112	
4	2	1400	2-7/16	1-9/16	1/2	1			XP0422808
5	2	1200	2-3/16	1-3/16	3/4	1-1/2	XP0520112	XP0525112	
5	2	1200	2-7/16	1-9/16	1/2	1-1/2			XP0522808
6	2	1400	2-3/16	1-3/16	3/4	1-3/4	XP0620112	XP0625112	
6	2	1400	2-7/16	1-9/16	1/2	1-3/4			XP0622808
6	3	1700	3-1/2	2-7/16	3/4	5	XP0650112	XP0655112	
6	3	1700	3-1/2	2-7/16	3/4	5			XP0652812
8	2	1200	2-3/16	1-3/16	3/4	4	XP0820112	XP0825112	
8	2	1200	2-7/16	1-9/16	1/2	4			XP0822808
8	2-1/2	2000	3-1/2	2-7/16	3/4	5	XP0840112	XP0845112	
8	2-1/2	2000	3-1/2	2-7/16	3/4	5			XP0842812
8	3	2000	3-1/2	2-7/16	3/4	6	XP0850112	XP0855112	
8	3	2000	3-1/2	2-7/16	3/4	6			XP0852812
10	2-1/2	2500	3-1/2	2-7/16	3/4	7	XP1040112	XP1045112	
10	2-1/2	2500	3-1/2	2-7/16	3/4	7			XP1042812
10	3	2500	3-1/2	2-7/16	3/4	8	XP105112	XP1055112	
10	3	2500	3-1/2	2-7/16	3/4	8			XP1052812

Roller bearings are complete with spanner bushing & nylon sealed retaining washers.

* Pedestal Precision Ball (29) bearings also available. To order change "28" to "29".

Example: XI0322908

X-Treme Advantages

- Specifically designed for applications involving: Chemicals, Solvents, and Water
- USA made for fast deliveries
- No parting lines in the middle of the tread, providing a smooth roll and clean appearance
- Low rolling resistance and crowned tread for ergonomics
- Solid polyurethane construction for no tread failures
- Non-marking and floor protective

SE



Solid Elastomer

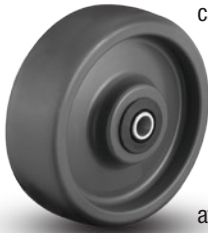


Ergonomic



Maintenance Free

Made in the USA



Designed specifically for high-capacity manual applications involving chemicals, solvents or water. Low rolling resistance provides the ergonomic qualities you demand. One-piece construction affords freedom from tread separation with an exceptionally long life. Non-marking, floor protective tread.

FEATURES

- **Wheel Face:** Moderate crown
- **Finish:** Grey
- **Temperature Range:** up to +230°F
- **Hardness:** 63(±5) Shore D

WHEEL OPTIONS

- Note: Select bearings featured are recommended for standard applications. For special applications or alternate bearings consult factory. See bearing information on page 13
- For customization & special application options, please consult factory

Wheel Diameter (Inches)	Tread Width (Inches)	Capacity (Lbs) (Based on manual operation)	Hub Length (Inches)	Bore ID (Inches)	Bearing ID (Inches)	Approx. Wt. (Lbs)	Wheel Number Delrin Bearing (51)	Ergonomic Wheel Number Precision Ball (28)	Wheel Number Roller Bearing (01)
Solid Elastomer Polyurethane (SE)									
4	2	1000	2-3/16	1-3/16	3/4	1	SE0425112		SE0420112~
4	2	1000	2-7/16	-	1/2	1		SE0422808	
5	2	1000	2-3/16	1-3/16	3/4	1-1/2	SE0525112		SE0520112~
5	2	1000	2-7/16	-	1/2	1-1/2		SE0522808	
6	2	1100	2-3/16	1-3/16	3/4	1-3/4	SE0625112		SE0620112~
6	2	1100	2-7/16	-	1/2	1-3/4		SE0622808	
8	2	1200	2-3/16	1-3/16	3/4	4	SE0825112		SE0820112~
8	2	1200	2-7/16	-	1/2	4		SE0822808	

~ Wheels are complete with spanner bushing & nylon sealed retaining washers.
• Hub length is 2-3/8" for Delrin models.

XA



Economical

Polyurethane on Polypropylene Core



This wheel has excellent properties where washdown of material handling equipment is required. Tread is mechanically locked to an injection molded polymer core to prevent separation. Polyurethane wheels offer greater load capacity than rubber. They offer excellent floor protection. These wheels resist chemicals, acids, caustics and oils. Color is grey on grey core.

FEATURES

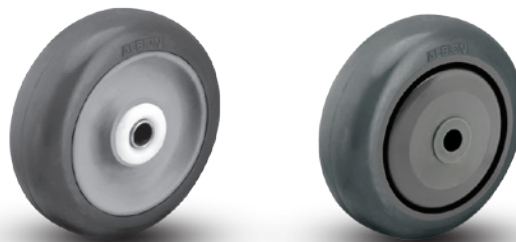
- **Wheel Face:** Moderate crown
- **Finish:** Grey tread on grey core
- **Temperature Range:** -40°F to +180°F
- **Hardness:** 63(±5) Shore D

WHEEL OPTIONS

- Prevenz™ Antimicrobial wheel available, specify **PREV**
- Note: Select bearings featured are recommended for standard applications. For special applications or alternate bearings consult factory. See bearing information on page 13
- For customization & special application options, please consult factory

Wheel Diameter (Inches)	Tread Width (Inches)	Capacity (Lbs) (Based on manual operation)	Hub Length (Inches)	Bore ID (Inches)	Bearing ID (Inches)	Approx. Wt. (Lbs)	Wheel Number Roller Bearing (01, 31)	Wheel Number Precision Ball Bearing (28)
Polyurethane on Polypropylene (XA)								
3	1-1/4	300	1-1/2	-	3/8	3/8	XA0303106	XA0302806*
3-1/2	1-1/4	360	1-1/2	-	3/8	3/8	XA03X3106	XA03X2806*
4	1-1/4	400	1-1/2	-	3/8	1/2	XA0403106	XA0402806*
4	2	600	2-3/16	1-3/16	3/4	1/2	XA0420112~	
5	1-1/4	440	1-1/2	-	3/8	3/4	XA0503106	XA0502806*
5	2	750	2-3/16	1-3/16	3/4	1-3/4	XA0520112~	
6	2	900	2-3/16	1-3/16	3/4	2-1/2	XA0620112~	
8	2	1000	2-3/16	1-3/16	3/4	2-3/4	XA0820112~	
10	2-1/2	1500	3-1/4	1-15/16	1	3	XA1040116	

~ Wheels are complete with spanner bushing and nylon sealed retaining thrust washer.
*Complete with thread guard spacer.



*Precision Bearing models come standard with thread guards.

SOLID POLYURETHANE & TPU • UP TO 1500



Eagle Polyurethane on Polypropylene

Albion's Eagle (EG) wheel is suited for a wide range of industrial applications and can withstand load capacities of 600 to 1,200 lbs. This wheel's unique, interlocking polyurethane tread on heavy duty polypropylene core offers superior adhesion for medium to heavy duty weight capacities.

Wheel Diameter (Inches)	Tread Width (Inches)	Capacity (Lbs) (Based on manual operation)	Hub Length (Inches)	Bore ID (Inches)	Bearing ID (Inches)	Approx. Wt. (Lbs)	Wheel Number Roller Bearing (01)	Wheel Number Delrin Bearing (51)	Wheel Number Pedestal Precision Ball Bearing (29)
Eagle Polyurethane on Polypropylene (EG)									
4	2	600	2-3/16	1-3/16	3/4		EG0420112	EG0425112	
4	2	600	2-3/16	1-3/16	1/2				EG0422908
5	2	900	2-3/16	1-3/16	3/4		EG0520112	EG0525112	
5	2	900	2-3/16	1-3/16	1/2				EG0522908
6	2	1100	2-3/16	1-3/16	3/4		EG0620112	EG0625112	
6	2	1100	2-3/16	1-3/16	1/2				EG0622908
8	2	1200	2-3/16	1-3/16	3/4		EG0820112	EG0825112	
8	2	1200	2-3/16	1-3/16	1/2				EG0822908

FEATURES

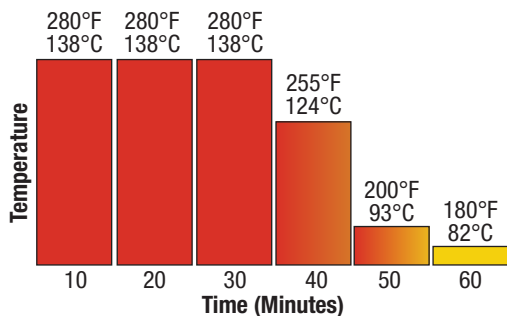
- **Wheel Face:** Crowned tread
- **Finish:** Blue on black core
- **Temperature Range:** -40°F to +180°F. See intermittent chart below for higher temp applications
- **Hardness:** 95 Shore A

- Excellent for clean applications
- Offers superior durability

WHEEL OPTIONS

- Note: Select bearings featured are recommended for standard applications. For special applications or alternate bearings consult factory. See bearing information on page 13
- For customization & special application options, please consult factory

MAXIMUM AMBIENT WHEEL TEMPERATURE VERSUS TIME

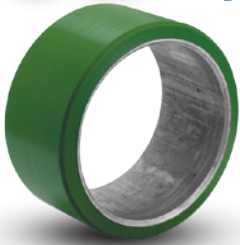


OG



Premium Quality

Polyurethane Press-On Tires



Polyurethane tires reduce operating cost because the high wear resistance of this material minimizes replacement. Polyurethane offers easier rollability, higher wear resistance, and greater capacity than rubber. Use press-on polyurethane as an alternative to standard mold-on polyurethane when greater cushioning or speed is involved. These wheels are also the perfect replacement wheel for many forklift brands.

FEATURES

- **Load Capacity:** 1.54 times greater than rubber
- Chunk and cut resistance
- Abrasion resistance
- Energy conservative design
- **Wheel Face:** as specified
- **Finish:** Green polyurethane or steel band
- **Temperature Range:** -40°F to +180°F
- **Hardness:** 95 Shore A

WHEEL OPTIONS

- Note: Select bearings featured are recommended for standard applications. For special applications or alternate bearings consult factory. See bearing information on page 13
- For customization & special application options, please consult factory



- Heavy Duty
- High Wear Resistance

OD x Width x ID (Inches)	Tire Number	Tread Style	Capacity (6 mph) (lbs)	Capacity (10 mph) (lbs)	Approx. Wt. (lbs)
8-1/2 x 4 x 4	OG0870016	Flat	2200	1940	12
8-1/2 x 4 x 4	OG087001601	Crown	2200	1940	12
9 x 5 x 5	OG0980020	Flat	3020	2680	16
9 x 5 x 5	OG098002001	Crown	3020	2680	16
9 x 5 x 5	OG098002002	Groove	3020	2680	16
10 x 3 x 6-1/4	OG1050025	Flat	1690	1490	10
10 x 3 x 6-1/4	OG105002501	Crown	1690	1490	10
10 x 4 x 5	OG1070020	Flat	2480	2190	18
10 x 4 x 5	OG107002001	Crown	2480	2190	18
10 x 4 x 6-1/4	OG1070025	Flat	2460	2190	14
10 x 4 x 6-1/4	OG107002501	Crown	2460	2190	14
10 x 4 x 6-1/2	OG1070026	Flat	2490	2190	14
10 x 4 x 6-1/2	OG107002601	Crown	2490	2190	14
10 x 5 x 5	OG1080020	Flat	3210	2870	15
10 x 5 x 5	OG108002001	Crown	3210	2870	15
10 x 5 x 5	OG108002002	Groove	3210	2870	15
10 x 5 x 6-1/4	OG1080025	Flat	3270	2890	16
10 x 5 x 6-1/4	OG108002501	Crown	3270	2890	16
10 x 5 x 6-1/4	OG108002502	Groove	3270	2890	16
10 x 5 x 6-1/2	OG1080026	Flat	3190	2830	19
10 x 5 x 6-1/2	OG108002601	Crown	3190	2830	19
10 x 5 x 6-1/2	OG108002602	Groove	3190	2830	19
10 x 6 x 6-1/4	OG1090025	Flat	3960	3540	22
10 x 6 x 6-1/4	OG109002501	Crown	3960	3540	22
10 x 6 x 6-1/4	OG109002502	Groove	3960	3540	22
10 x 6 x 6-1/2	OG1090026	Flat	3940	3520	22
10 x 6 x 6-1/2	OG109002601	Crown	3940	3520	22
10 x 6 x 6-1/2	OG109002602	Groove	3940	3520	22
10 x 7 x 6-1/4	OG109002503	Flat	4770	4240	26
10 x 7 x 6-1/4	OG109002504	Groove	4770	4240	26
10 x 7 x 6-1/2	OG109002603	Flat	4750	4290	26
10 x 7 x 6-1/2	OG109002604	Groove	4750	4290	26
10 x 3 x 8	OG1050032	Flat	2000	1850	15
10-1/2 x 3 x 8	OG105003201	Groove	2000	1850	15
10-1/2 x 4 x 5	OG107002002	Flat	2170	1940	19
10-1/2 x 4 x 5	OG107002003	Crown	2170	1940	19
10-1/2 x 4 x 6-1/2	OG107002602	Flat	2130	2260	15
10-1/2 x 4 x 6-1/2	OG107002603	Crown	2130	2260	15
10-1/2 x 4-1/2 x 8	OG107003202	Flat	2820	2500	18
10-1/2 x 4-1/2 x 8	OG107003203	Crown	2820	2500	18
10-1/2 x 5 x 5	OG108002003	Flat	3470	3060	19
10-1/2 x 5 x 5	OG108002004	Crown	3470	3060	19
10-1/2 x 5 x 5	OG108002005	Groove	3470	3060	19
10-1/2 x 5 x 6-1/4	OG108002503	Flat	3330	2970	20
10-1/2 x 5 x 6-1/4	OG108002504	Crown	3330	2970	20
10-1/2 x 5 x 6-1/4	OG108002505	Groove	3330	2970	20
10-1/2 x 5 x 6-1/2	OG108002603	Flat	3380	2990	20
10-1/2 x 5 x 6-1/2	OG108002604	Crown	3380	2990	20
10-1/2 x 5 x 6-1/2	OG108002605	Groove	3380	2990	20

OD x Width x ID (Inches)	Tire Number	Tread Style	Capacity (6 mph) (lbs)	Capacity (10 mph) (lbs)	Approx. Wt. (lbs)
Polyurethane Press-On Tires (OG)					
10-1/2 x 6 x 5	OG1090020	Flat	4400	3900	24
10-1/2 x 6 x 5	OG109002001	Crown	4400	3900	24
10-1/2 x 6 x 5	OG109002002	Groove	4400	3900	24
10-1/2 x 6 x 6-1/4	OG109002505	Flat	4330	3870	23
10-1/2 x 6 x 6-1/4	OG109002506	Crown	4330	3870	23
10-1/2 x 6 x 6-1/4	OG109002507	Groove	4330	3870	23
10-1/2 x 6 x 6-1/2	OG109002605	Flat	4310	3850	23
10-1/2 x 6 x 6-1/2	OG109002606	Crown	4310	3850	23
10-1/2 x 6 x 6-1/2	OG109002607	Groove	4310	3850	23
10-1/2 x 7 x 6-1/2	OG109002608	Flat	5040	4450	27
10-1/2 x 7 x 6-1/2	OG109002609	Groove	5040	4450	27
10-1/2 x 8 x 6-1/2	OG109002610	Flat	5690	5080	31
10-1/2 x 8 x 6-1/2	OG109002611	Groove	5690	5080	31
12 x 3-1/2 x 8	OG1260032	Flat	2390	2110	11
12 x 3-1/2 x 8	OG126003201	Crown	2390	2110	11
12 x 4 x 8	OG1270032	Flat	2840	2510	13
12 x 4 x 8	OG127003201	Crown	2840	2510	13
12 x 4-1/2 x 8	OG127003202	Flat	3300	2910	15
12 x 4-1/2 x 8	OG127003203	Crown	3300	2910	15
12 x 5 x 8	OG1280032	Flat	3770	3300	17
12 x 5 x 8	OG128003201	Crown	3770	3300	17
12 x 5 x 8	OG128003202	Groove	3770	3300	17
12 x 5-1/2 x 8	OG12900320	Flat	4080	3710	19
12 x 5-1/2 x 8	OG129003201	Crown	4080	3710	19
12 x 5-1/2 x 8	OG129003202	Groove	4080	3710	19
12 x 6 x 8	OG129003203	Flat	4520	4110	21
12 x 6 x 8	OG129003204	Crown	4520	4110	21
12 x 6 x 8	OG129003205	Groove	4520	4110	21
12 x 6-1/2 x 8	OG129003206	Flat	4960	4510	23
12 x 6-1/2 x 8	OG129003207	Groove	4960	4510	23
12 x 7 x 8	OG129003208	Flat	5300	4900	25
12 x 7 x 8	OG129003209	Groove	5300	4900	25
13 x 3-1/2 x 8	OG1360032	Flat	2480	2200	20
13 x 3-1/2 x 8	OG136003201	Crown	2480	2200	20
13 x 4-1/2 x 8	OG1370032	Flat	3540	3130	27
13 x 4-1/2 x 8	OG137003201	Crown	3540	3130	27
13 x 5-1/2 x 8	OG1390032	Flat	3600	3240	33
13 x 5-1/2 x 8	OG139003201	Crown	3600	3240	33
13 x 5-1/2 x 8	OG139003202	Groove	3600	3240	33
13-1/2 x 4-1/2 x 8	OG137003202	Flat	3620	3200	28
13-1/2 x 4-1/2 x 8	OG137003203	Crown	3620	3200	28
13-1/2 x 5-1/2 x 8	OG138003203	Flat	4740	4200	34
13-1/2 x 5-1/2 x 8	OG138003204	Crown	4740	4200	34
13-1/2 x 5-1/2 x 8	OG138003205	Groove	4740	4200	34
14 x 4-1/2 x 8	OG1470032	Flat	3680	3260	31
14 x 4-1/2 x 8	OG147003201	Crown	3680	3260	31
15 x 5 x 11-1/4	OG1580045	Flat	4390	3880	33
15 x 5 x 11-1/4	OG158004501	Crown	4390	3880	33
15 x 5 x 11-1/4	OG158004502	Groove	4390	3880	33

OD x Width x ID (Inches)	Tire Number	Tread Style	Capacity (6 mph) (lbs)	Capacity (10 mph) (lbs)	Approx. Wt. (lbs)
Polyurethane Press-On Tires (OG)					
15 x 6 x 11-1/4	OG1590045	Flat	5440	4800	40
15 x 6 x 11-1/4	OG159004501	Crown	5440	4800	40
15 x 6 x 11-1/4	OG159004502	Groove	5440	4800	40
15 x 7 x 11-1/4	OG159004503	Flat	6480	5730	47
15 x 7 x 11-1/4	OG159004504	Groove	6480	5730	47
15 x 8 x 11-1/4	OG159004505	Flat	7530	6650	53
15 x 8 x 11-1/4	OG159004506	Groove	7530	6650	53
15 x 9 x 11-1/4	OG159004507	Flat	8700	7700	60
15 x 9 x 11-1/4	OG159004508	Groove	8700	7700	60
15-1/2 x 5 x 10	OG1580040	Flat	4640	4110	39
15-1/2 x 5 x 10	OG158004001	Crown	4640	4110	39
15-1/2 x 5 x 10	OG158004002	Groove	4640	4110	39
15-1/2 x 6 x 10	OG1590040	Flat	5880	5210	46
15-1/2 x 6 x 10	OG159004001	Crown	5880	5210	46
15-1/2 x 6 x 10	OG159004002	Groove	5880	5210	46
16 x 5 x 10-1/2	OG1680042	Flat	4760	4200	40
16 x 5 x 10-1/2	OG168004201	Crown	4760	4200	40
16 x 5 x 10-1/2	OG168004202	Groove	4760	4200	40
16 x 6 x 10-1/2	OG1690042	Flat	6040	5330	48
16 x 6 x 10-1/2	OG169004201	Crown	6040	5330	48
16 x 6 x 10-1/2	OG169004204	Groove	6040	5330	48
16 x 7 x 10-1/2	OG169004203	Flat	7320	6470	57
16 x 7 x 10-1/2	OG169004204	Groove	7320	6470	57
16-1/4 x 4 x 11-1/4	OG1670045	Flat	3560	3140	32
16-1/4 x 4 x 11-1/4	OG167004501	Crown	3560	3140	32
16-1/4 x 5 x 11-1/4	OG1680045	Flat	4800	4250	40
16-1/4 x 5 x 11-1/4	OG168004501	Crown	4800	4250	40
16-1/4 x 5 x 11-1/4	OG168004502	Groove	4800	4250	40
16-1/4 x 6 x 11-1/4	OG1690045	Flat	6050	5360	48
16-1/4 x 6 x 11-1/4	OG169004501	Crown	6050	5360	48
16-1/4 x 6 x 11-1/4	OG169004502	Groove	6050	5360	48
16-1/4 x 7 x 11-1/4	OG169004503	Flat	7300	6450	56
16-1/4 x 7 x 11-1/4	OG169004504	Groove	7300	6450	56
18 x 5 x 12-1/8	OG1880049	Flat	5170	4590	43
18 x 5 x 12-1/8	OG188004901	Crown	5170	4590	43
18 x 6 x 12-1/8	OG1890049	Flat	6610	5850	52
18 x 6 x 12-1/8	OG189004901	Crown	6610	5850	52
18 x 7 x 12-1/8	OG189004902	Flat	8040	7110	63
18 x 7 x 12-1/8	OG189004903	Groove	8040	7110	63
18 x 8 x 12-1/8	OG189004904	Flat	9470	8380	71
18 x 8 x 12-1/8	OG189004905	Groove	9470	8380	71
18 x 9 x 12-1/8	OG189004906	Flat	10900	9660	82
18 x 9 x 12-1/8	OG189004907	Groove	10900	9660	82
18 x 4 x 14	OG1870056	Flat	3850	3400	32
18 x 4 x 14	OG187005601	Crown	3850	3400	32
18 x 5 x 14	OG1880056	Flat	5070	4480	40
18 x 5 x 14	OG188005601	Crown	5070	4480	40
18 x 7 x 14	OG1890056	Flat	7530	6650	58
18 x 7 x 14	OG189005601	Groove	7530	6650	58

OG Premium Quality Press-On Mini Polyurethane



Polyurethane tires will reduce operating cost because the high wear resistance of this material minimizes replacement. Polyurethane offers easier rollability, higher wear resistance, and greater capacity than rubber. Use press-on polyurethane as an alternative to standard mold-on polyurethane when greater cushioning or speed is involved.

FEATURES

- **Wheel Face:** Flat
- **Finish:** Green tread on grey hub
- **Temperature Range:** -40°F to +180°F
- **Hardness:** 95 Shore A

WHEEL OPTIONS

- Note: Select bearings featured are recommended for standard applications. For special applications or alternate bearings consult factory. See bearing information on page 13
- For customization & special application options, please consult factory

Wheel Diameter (Inches)	Tread Width (Inches)	Tire ID, Core OD (Inches)	Capacity (Lbs) (Ride for manual operation)	Hub Length (Inches)	Bore ID (Inches)	Bearing ID (Inches)	Approx. Wt. (Lbs)	Wheel Number Roller Bearing (01)	Wheel Number Over Spacers (09)
Press-on Mini Polyurethane (OG)									
5	4	3	2240	4-1/4	1-15/16	1-1/4	10	OG057012001	
5	4	3	2240	4-1/2	2	1	10		OG057091601
5	5	3	2800	5-1/4	1-15/16	1-1/4	13	OG058012001	
5	5	3	2800	5-1/2	2	1	13		OG058091601
6	4	4	2990	4-1/4	1-15/16	1-1/4	18-1/2	OG067012001	
6	4	4	2990	4-1/2	2	1	18-1/2		OG067091601
6	5	4	3700	4-1/4	1-15/16	1-1/4	20	OG068012001	
6	5	4	3700	5-1/2	2	1	20		OG068091601
6	6	4	4400	6-1/2	2	1	23		OG069091601
7	4	5	3040	4-1/2	2	1	22		OG077091601
7	5	5	3800	5-1/2	2	1	27-1/2		OG078091601
7	6	5	4550	6-1/2	2-7/16	1-1/4	33		OG079092001
8	3	6	2640	3-1/2	1-15/16	3/4	18		OG085091201
8	4	6	3670	4-1/2	2	1	20		OG087091601
8	5	6	4590	5-1/2	2-7/16	1-1/4	25		OG088092001
8	6	6	5500	6-1/2	2-7/16	1-1/4	36		OG089092001
10	3	8	3000	3-1/2	1-15/16	3/4	26		OG105091201
10	4	8	4000	4-1/2	2-7/16	1	31		OG107091601
10	5	8	5000	5-1/2	2	1	41		OG108091601
10	6	8	6000	6-1/2	2-7/16	1-1/4	64		OG109092001
10-1/2	3	8	3300	3-1/2	1-15/16	3/4	27		OG105091202
10-1/2	4	8	4400	4-1/2	2-7/16	1	32-1/2		OG107091602
10-1/2	5	8	5500	5-1/2	2-11/32	1-1/4	43		OG108092001
10-1/2	6	8	6600	6-1/2	2-7/16	1-1/4	66		OG109092002

POLYURETHANE PRESS-ON & V-GROOVE • UP TO 6500

XV Premium Quality Polyurethane V-Groove



Made in the USA

Wheel face and "V"-groove are machined from heavy duty polyurethane. A relief groove at the base of the "V" tends to equalize the load to each face of the angle track when in operation. Wheel face and bore are machined for concentricity to proper tracking. These wheels can be used not only on track but flat surfaces as well.

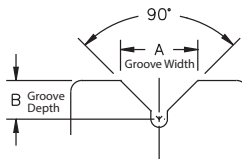
FEATURES

- **Wheel Face:** V-groove
- **Finish:** Green
- **Temperature Range:** -40°F to +180°F
- **Hardness:** 60 Shore D

WHEEL OPTIONS

- Note: Select bearings featured are recommended for standard applications. For special applications or alternate bearings consult factory. See bearing information on page 11
- For customization & special application options, please consult factory

Wheel Diameter (Inches)	Tread Width (Inches)	Capacity (Lbs) (Ride for manual operation)	Hub Length (Inches)	Bore ID (Inches)	Bearing ID (Inches)	Groove Width "A" (Inches)	Groove Depth "B" (Inches)	Approx. Wt. (Lbs)	Wheel Number Roller Bearing (02)
Polyurethane V-Groove (XV)									
4	2	300	2-3/16	1-3/16	3/4	7/8	7/16	1	XV042012
5	2	300	2-3/16	1-3/16	3/4	7/8	7/16	1-1/2	XV052012
6	2	300	2-3/16	1-3/16	3/4	7/8	7/16	1-3/4	XV062012
8	2	300	2-3/16	1-3/16	3/4	7/8	7/16	2-3/4	XV082012



Letters match to chart descriptions

Please note: Track alignment is critical when utilizing v-groove wheels.