





CASTER ACCESSORIES

Caster Brakes

 Brakes for Light Duty Casters.....	179
 Brakes for Medium & Heavy Duty Casters.....	179-180
Brakes Kits.....	181


Swivel Locks/Pads/Jacks

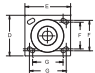
 Swivel Locks.....	182
 Quick-Release Caster Pads.....	182
 Leveling Jacks.....	182

Floor Locks

 16 Series ERGO (LE).....	183
 Cast Iron (LF).....	183
 02 Series (LF).....	184
 Standard (LF).....	184
 E-Line.....	185

 Turntables.....	185
---	-----

 Bumpers.....	186
--	-----

 Optional Plates.....	187
--	-----

 Caster and Wheel Replacement Parts.....	188-191
---	---------

Caster Brakes

Brakes for Light Duty Casters

02/04 Face Contact Brake



Available on 02 & 04 Series.

02 Part #	Dia.	04 Part #	Dia.
FB020300	3"	FB040300	3"
FB020350	3.5"	FB040350	3.5"
FB020400	4"	FB040400	4"
FB020500	5"	FB040500	5"

P2 Face Contact Brake



Available on P2 Series.

Part #	Dia.
FBDC0300	3"
FBDC0350	3.5"
FBDC0400	4"
FBDC0500	5"

02 Grip Lock Brake



Available on 02 Series.

Corrosion resistant brake features rugged thermoplastic construction.

Part #	Dia.
GL020300	3"
GL020350	3.5"
GL020400	4"
GL020500	5"

02 Total Lock Brake



Available on 02 Series.
Locks wheel and swivel with simple press of toe lever. Add **T** to end of part number for factory orders.

P2 Total Lock Brake



Available on P2 Series.
Locks wheel and swivel with simple press of toe lever. Add **T** to end of part number for factory orders.

LASER CUT INTEGRATED BRAKES



New PLB brakes are now available for medium to heavy duty casters, consult factory.

LASER CUT INTEGRATED TOE GUARDS



New Integrated toe guards are now available for medium to heavy duty casters, consult factory.

Brakes for Medium and Heavy Duty Casters

12/16 FBA Face Brake



Available on 12 and 16 Series.
Step down to engage and release brake. Will not work with swivel locks.

Part #	Dia.
FB140400	4"
FB140500	5"
FB140600	6"
FB140800	8"

FBB Face Brake



Available on 12, 16, 18, 60, 61, 62, 71, 72, 110, 170, 310, 410 Series.

Part #	Arm Angle	Dia.
WK040202WA	55°	4"
WK050202WA	55°	5"
WK060202WA	55°	6"
WK080202W	75°	8"

FBC Face Brake



Available on 18, 100, 110, and 170 Series.

Part #	Dia.
FB180400	4"
FB180500	5"
FB180600	6"
FB180800	8"

FBD Stainless Steel Face Brake



Available on E5, and 120 Series.
FB12000 includes rubber pad on brake arm.

05 Series		E5, 120 Series	
Part #	Dia.	Part #	Dia.
FB050400	4"	FB120400	4"
FB050500	5"	FB120500	5"
FB050600	6"	FB120600	6"
FB050800	8"	FB120800	8"

Caster Brakes

Brakes for Medium and Heavy Duty Casters (continued)

FBE Face Brake



Available on 12, 16, 18, 60, 61, 62, 71, 110 and 170 Series.
Works on 6" and 8" rigid casters.

Part #	Dia.
FB160400	4"
FB160500	5"
FB160600	6"
FB160800	8"

FBF Stainless Steel Face Brake



Available on E5 Series.
Works on swivel and rigid casters.

Part #	Dia.
WKE50400	4"
WKE50500	5"
WKE50600	6"
WKE50800	8"

FBG Stainless Steel Face Brake



Available on E5, and 120 Series stainless steel. Works on 6" and 8" rigid casters.

Part #	Dia.
WK1200400	4"
WK1200500	5"
WK1200600	6"
WK1200800	8"

Cam Brake



Available on 12, 16, 18, 60, 61, 62, 71, 72, 110 and 170 Series.

Works on swivel or rigid casters.
Can be used with roller, Delrin, and Oilex bearings. May appear different on other series. Please note: Not all brake / bearing combinations will work – please consult factory.

Part #	
WK405101	Long pedal
WK405104	Short pedal

CB Stainless Steel Cam Brake



Available on E5 and 05 Series.
Works only on swivel casters.
Can be used with roller, Delrin, and Oilex bearings. May appear different on other series. Please note: Not all brake / bearing combinations will work – please consult factory.

Part #	
WK405200	Short pedal
WK405201	Long pedal

Total Lock Brake



Available on 16 Series.
6" rig requires 7-1/2" HS60 option.

Part #	Dia.
TL160400	4"
TL160500	5"
TL160600	6"
TL160800	8"

Grip Lock Brake



Available on 16 Series.
Does not work with swivel lock.

Part #	Dia.
GL160400	4"
GL160500	5"
GL160600	6"
GL160800	8"

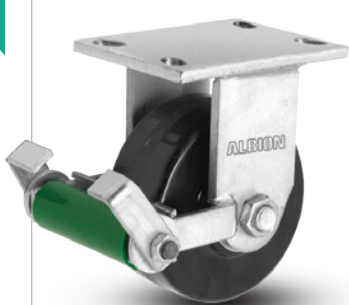
Integrated Poly Lock Brake



Available on 90, 110, 310, 410, 600, 610 and 700 Series.

New laser cut design. Large poly brake pedal engages metal plate against wheel tread for positive braking. Brake can mount trailing or leading position (leading shown).

Poly Cam Brake



Available on all swivel and rigid casters, except stainless steel and spring loaded.
Add **P** to end of the part number for factory orders.

Single Side Brake



Available on all swivel and rigid casters, except stainless.
Right hand installation standard, left hand option available. Add **SSB** to end of part number for factory orders.

Double Side Brake



Available on all swivel and rigid casters, except stainless. Same as Single Side Brake, except brake on both sides. Add **DSB** to end of part number for factory orders.

Face Contact Brake



Available on all swivel and rigid casters, except stainless and spring loaded. Turn lever to apply shoe against wheel tread for positive locking action. Add **F** to end of part number for factory orders.

Caster Brakes

Brakes Kits for Light Duty to Medium Heavy Duty Casters

Kit Number	Series	For Wheel Size	Brake Type	Exceptions
FBDC0300 FBDC0350 FBDC0400 FBDC0500	DC, P2	3" 3.5" 4" 5"	Face contact, pedal on side	
FB020300 FB020350 FB020400 FB020500	02	3" 3.5" 4" 5"	Face contact, pedal on side	
GL020300 GL020350 GL020400 GL020500	02	3" 3.5" 4" 5"	Face contact, pedal trailing	
FB040300 FB040350 FB040400 FB040500	04	3" 3.5" 4" 5"	Face contact, pedal on side	
WK405101 WK405104	12, 16, 61, 62 71, 72, 100, 110	6", 8" 4", 5"	Cam action brake, side pedal	Not for precision or Delrin bearings
WK405200 WK405201	05	4", 5" 6", 8"	Cam action brake, side pedal	Not for precision or Delrin bearings
FB140400 FB140500 FB140600 FB140800	12, 16	4" 5" 6" 8"	Face contact, pedal on side	
FB180400 FB180500 FB180600 FB180800	18, 110	4" 5" 6" 8"	Face contact, pedal on side	
GL160400 GL160500 GL160600 GL160800	12, 16	4" 5" 6" 8"	Face contact, pedal trailing	
ZL04208 ZL05208 ZL06208 ZL08208	12, 16, 18, 61, 62, 71, 72, 78, 100, 110	4" 5" 6" 8"	Face contact, pedal trailing	For use on wheels with 2.438" hub length only.
ZL05408 ZL06408 ZL08408	61, 62, 63, 72, 78	5" 6" 8"	Face contact, pedal trailing	For use on wheels with 2.75" hub length only.

Swivel Locks



Welded Hand Operated



Field Installable
Hand Operated



Field Installable
Foot Operated

Hand activated or foot activated plunger can be disengaged for continuous swiveling or engaged for straight line traveling. Requires notched yoke base. **To order standard swivel lock installed add "L" to end of caster number.** For field installation options see chart.

Series	Factory Install Code	Hand Operated Field Installable Part Numbers	Foot Operated Field Installable Part Numbers
05 to 90 Series Swivel Locks			
16	L	SL160000	SL160002
18*	L	SL160000	SL1000005
40	L	SL160000	N/A
42	L	SL810000	N/A
44	L	SL90000002	N/A
61	L	SL610000	N/A
62	L	SL620000	N/A
63	L	SL620000	N/A
71*	L	SL160000~	SL160002~
72	L	SL720000	N/A
78	L	SL720000	N/A
81*	L	SL810000~	N/A
84	L	SL810000	N/A
90	L	SL900000	N/A
92	L	SL920000	N/A

Series	Factory Install Code	Hand Operated Field Installable Part Numbers	Foot Operated Field Installable Part Numbers
92 to 850 Series Swivel Locks			
94	L	SL940000	N/A
95	L	SL954600	N/A
100*	L	SL160000	SL160002
110*^	L	SL160000	SL160002
120*	L	SL1200000	N/A
300*	L	SL3000000	N/A
310*	L	SL3000000	N/A
330*	L	SL3000000	N/A
400*	L	SL4000000	N/A
410*	L	SL4000000	N/A
600*	L	SL6000000~	N/A
610*	L	SL6000000~	N/A
700*	L	SL7000000~	N/A
850*	L	SL8500000~	N/A

^ SL16000006 if you specify K plate.

* Swivel lock is not attached to caster.
~ Requires notched yoke.

Quick-Release Caster Pads



Albion quick-release caster pads make changing casters fast and easy.

- Simplifies caster replacement
- Install or replace casters with just one nut & bolt
- Unplated for easy welding to carts

Description	Series	Caster Pad Number
Quick Release Caster Pads		
Fits 2-1/2" x 3-5/8" Top Plate	02, P2	PC020000
Fits 4" x 4-1/2" Top Plate	16	PC160000
Fits 4" x 4-1/2" Top Plate	18, 110	PC110000
Fits 4-1/2" x 6-1/4" Top Plate	62, 63, 72, 16 Pattern K, 310	PC620000



Leveling Jacks



- Retractable Folding Hand Crank
- Reinforced rubber pad on base
- Zinc plated for corrosion resistance
- For leveling, stabilizing and elevating portable equipment

Overall Height	Min. Ht. Below Frame of Equipment	Max. Extended Ht. Below Frame of Equipment	Length of Screw Travel	Approx. Weight (lbs)	Part Number
Leveling Jacks					
18"	4-1/2"	13-1/2"	9"	10-1/2	J625
26"	4-1/2"	21-1/2"	17"	12-1/2	J622
30"	4-1/2"	25-1/2"	21"	14	J627

LE 16 Series ERGOnomic Floor Locks



Caster Wheel Diameter (Inches)	Caster Series Number	Caster Height (Inches)	Retracted Clearance (Inches)	Approx. Wt. (Lbs)	Floor Lock Number
LE ERGOnomic Floor Locks					
6	16	7-1/4	1-1/2	3-3/4	16LE0680
8	16	9-1/2	1-1/2	3-3/4	16LE0880
6	110	7-1/2	1-1/2	3-3/4	110LE0680
8	110	10-1/8	1-1/2	3-3/4	110LE0880



Easy to engage. Simply push down on ergonomically designed extended pedal to activate.



Easy to disengage. Simply push down on top pedal to deactivate.

FEATURES

- Ergonomically designed extended pedals make this floor lock the best in the industry!
- Bright Safety Yellow powder coating
- Easy to operate – even with steel toed boots
- Top plate bolt hole spacing: same as 16 Series
- Brake Shoe: Large, non-skid, molded rubber for solid, no-slip contact
- Foot Pedal: Adjusted by slight foot pressure for simple, instant locking
- Finish: Corrosion resistant zinc plate and powder coating for long-use

LF Cast Iron Floor Locks

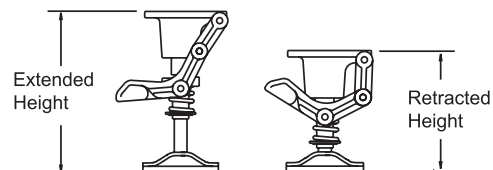
This floor lock allows you to immobilize equipment in any desired location, but does not interfere with its movement when not in use. Platform trucks, fixture dollies or other castered items can be locked in place by a simple press of the foot. Locking action is created when a large, round friction face of nearly 10 sq. inches in area is pressed against the floor with the force of 70 to 100 lbs. This position lock does not lift equipment.



Caster Wheel Diameter (Inches)	Extended Working Height (Inches)	Retracted Height (Inches)	Mounting Plate Size (Inches)	Bolt Hole Spacing (Inches)	Attaching Bolt Size (Inches)	Approx. Wt. (Lbs)	Floor Lock Number
LF Cast Iron Floor Locks							
4	5-5/8	5	3-11/16 x 5-3/8	2-5/8 x 3-5/8	3/8	7-3/4	920LF04548
5	6-1/2	5-7/8	3-11/16 x 5-3/8	2-5/8 x 3-5/8	3/8	8	930LF05650
5	7-9/32	6-21/32	3-11/16 x 5-3/8	2-5/8 x 3-5/8	3/8	8-1/4	930LF05728
5	7-5/8	6-1/2	4-1/2 x 6	2-7/16 x 4-15/16	1/2	10-1/4	930LF05762
6	7-3/8	6-3/4	3-11/16 x 5-3/8	2-5/8 x 3-5/8	3/8	8-1/4	940LF06737
6	7-1/2	6-7/8	3-11/16 x 5-3/8	2-5/8 x 3-5/8	3/8	8-1/4	940LF06750
6	7-1/2	6-3/8	4-1/2 x 6	2-7/16 x 4-15/16	1/2	10-1/2	940LF06751
6	7-25/32	6-21/32	4-1/2 x 6	2-7/16 x 4-15/16	1/2	10-1/2	940LF06778
6	8-1/8	7	4-1/2 x 6	2-7/16 x 4-15/16	1/2	10-1/2	940LF06812
8	9-1/2	8-3/8	4-1/2 x 6	2-7/16 x 4-15/16	1/2	10-1/2	950LF08950
8	9-1/2	8-7/8	3-11/16 x 5-3/8	2-5/8 x 3-5/8	3/8	9-1/2	950LF08951
8	9-7/8	8-3/4	4-1/2 x 6	2-7/16 x 4-15/16	1/2	10-1/2	950LF08987
8	10-5/16	9-3/16	5-3/8 x 7-1/4	3-3/8 x 5-1/4	1/2	15	950LF081031
8	10-1/2	9-5/8	5-3/8 x 7-1/4	3-3/8 x 5-1/4	1/2	15-1/4	950LF081050
10	11-1/2	10-3/8	4-1/2 x 6	2-7/16 x 4-15/16	1/2	11-1/2	980LF101150
10	12-1/2	11-3/8	5-3/8 x 7-1/4	3-3/8 x 5-1/4	1/2	15-1/4	980LF101250

FEATURES

- **Brake Shoe:** Large, non-skid, molded rubber for solid, no-slip contact
- **Foot Pedal:** Adjusted by slight foot pressure for simple, instant locking
- **Finish:** Painted



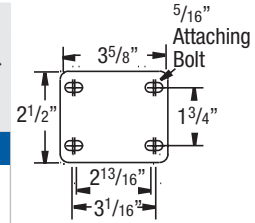
LF

O2 Series Floor Locks



The Albion O2 Series floor locks are designed to hold your portable equipment in a desired location. Intended for use on level surfaces, the floor lock is activated by toe pressure on the extension pedal or released by toe touching one of the dual retractable plates. For best results, units should be used in pairs.

Caster Wheel Diameter (Inches)	Caster Series Number	Caster Height (Inches)	Retracted Clearance (Inches)	Approx. Wt. (Lbs.)	Floor Lock Number
3-1/2	02	4-11/16	3/4	2-3/4	02LF03X80
4	02	5-1/8	3/4	2-3/4	02LF0480
5	02	6-3/16	3/4	2-3/4	02LF0580



FEATURES

- **Top Plate:** dimension matches standard O2 Series caster top plate for easy installation
- **Brake Shoe:** Large, non-skid, molded rubber for solid, no-slip contact
- **Foot Pedal:** Adjusted by slight foot pressure for simple, instant locking
- **Finish:** Corrosion resistant zinc plating for long-use



Floor Lock Engaged



Floor Lock Disengaged

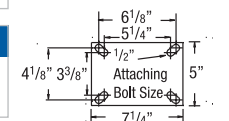
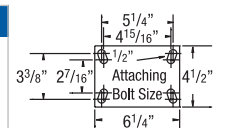
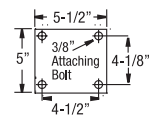
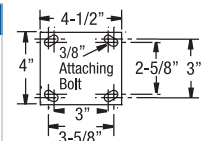
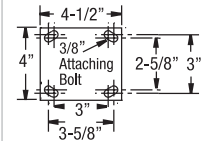
LF

Standard Floor Locks



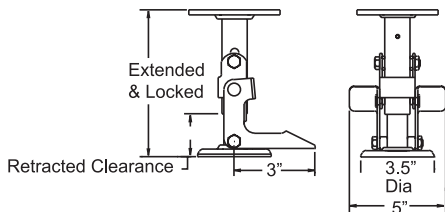
Designed to hold portable equipment in a desired location. Intended for use on level surfaces. Floor lock is activated by toe pressure on the extension pedal or released by toe touching one of the dual retractable plates. The large non-skid brake pad, under high spring compression, holds the portable piece of equipment until released. For best results, units should be used in pairs.

Caster Wheel Diameter (Inches)	Caster Series Number	Caster Height (Inches)	Retracted Clearance	Approx. Wt. (Lbs.)	Floor Lock Number
16/71 Series Floor Locks					
4	16, 71	5-5/8	3/4	3-1/4	16LF0480
5	16, 71	6-1/2	3/4	3-1/2	16LF0580
6	16	7-1/4	3/4	3-1/2	16LF0680
6	71	7-1/2	3/4	3-3/4	71LF0680
8	16	9-1/2	3/4	4	16LF0880
8	71	10-1/8	3/4	4-1/2	71LF0880
05 Stainless Steel Series Floor Locks					
4	05	5-5/8	3/4	3-1/4	05LF0480
5	05	6-1/2	3/4	3-1/2	05LF0580
6	05	7-1/2	3/4	3-3/4	05LF0680
8	05	9-1/2	3/4	4	05LF0880
12/61 Series Floor Locks					
4	12, 61	5-5/8	9/16	4	12LF0480
5	12, 61	6-1/2	1	4-1/4	12LF0580
6	12, 61	7-3/8	1	4-1/4	12LF0680
8	12, 61	9-1/2	1	4-3/4	12LF0880
62, 63, 72, 81 Series Floor Locks					
4	62, 63, 72, 81	5-5/8	9/16	4	62LF0480
5	62, 63, 72, 81	6-1/2	1	4-1/4	62LF0580
6	62, 63, 72, 81	7-1/2	1	4-1/4	62LF0680
8	62, 63, 72, 81	10-1/8	1	4-1/2	62LF0880
90 Series Floor Locks					
6	90	8	1	6	90LF0680
8	90	10-1/2	1	6-1/2	90LF0880



FEATURES

- **Top Plate:** Steel matching regular caster tops for easy installation
- **Brake Shoe:** Large, non-skid, molded rubber for solid, no-slip contact
- **Foot Pedal:** Adjusted by slight foot pressure for simple, instant locking
- **Finish:** Corrosion resistant zinc plating for long-use

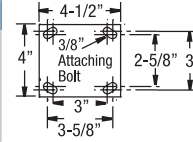


E-Line Floor Locks

Standard Floor Locks



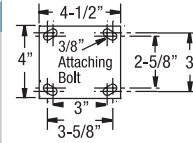
Caster Wheel Diameter (Inches)	Caster Series Number	Caster Height (Inches)	Retracted Clearance	Approx. Wt. (Lbs.)	Floor Lock Number
E-Line Series Floor Locks					
4"	E-Line	5-5/8"	3/4"	3-1/4	FL-4E
5"	E-Line	6-1/2"	3/4"	3-1/2	FL-5E
6"	E-Line	7-1/2"	3/4"	3-3/4	FL-6E
8"	E-Line	9-1/2"	3/4"	4	FL-8E



Double Pedal Floor Locks



Caster Wheel Diameter (Inches)	Caster Series Number	Caster Height (Inches)	Retracted Clearance	Approx. Wt. (Lbs.)	Floor Lock Number
E-Line Series Floor Locks					
4"	E-Line	5-5/8"	1"	3-7/8	FLOCKE40
5"	E-Line	6-1/2"	1"	4	FLOCKE50
6"	E-Line	7-1/2"	1-3/8"	4-1/2	FLOCKE60
8"	E-Line	9-1/2"	1-1/4"	4-3/4	FLOCKE80



FEATURES

- **Top Plate:** dimension matches standard E-Line and 16 Series caster top plate for easy installation
- **Brake Shoe:** Large, non-skid, molded rubber for solid, no-slip contact
- **Foot Pedal:** Adjusted by slight foot pressure for simple, instant locking
- **Finish:** Corrosion resistant zinc plating for long-use

Adaptable to all types of portable equipment, the double pedal floor lock allows for easier floor lock engagement.

Shockmaster and Contender Turntables



Turntable Description	Top Plate Size (Inches)	Overall Height (Inches)	Capacity (Lbs.)	Part Number
Shockmaster Turntables				
1/2" thick mounting plates, 3/4" ball bearings (4-1/2" raceway)	6-1/4" X 7-1/4"	2.75"	10000	TT600000
1/2" thick mounting plates, 3/4" ball bearings (7" raceway)	8-1/2" X 8-1/2"	3.125"	20000	TT700000
Contender Turntables				
1/4" thick mounting plates, 3/8" ball bearings	4" X 4-1/2"	1.53"	1400	TT110000
5/16" mounting plates, 1/2" ball bearings	4-1/2" X 6-1/4"	1.75"	4100	TT310000
3/8" thick mounting plates, 1/2" ball bearings	5-1/4" X 7-1/4"	1.75"	5400	TT410000
1/2" thick mounting plates, 3/4" ball bearings (4-1/2" raceway)	6-1/4" X 7-1/4"	2.78"	9500	TT610000

APPLICATIONS

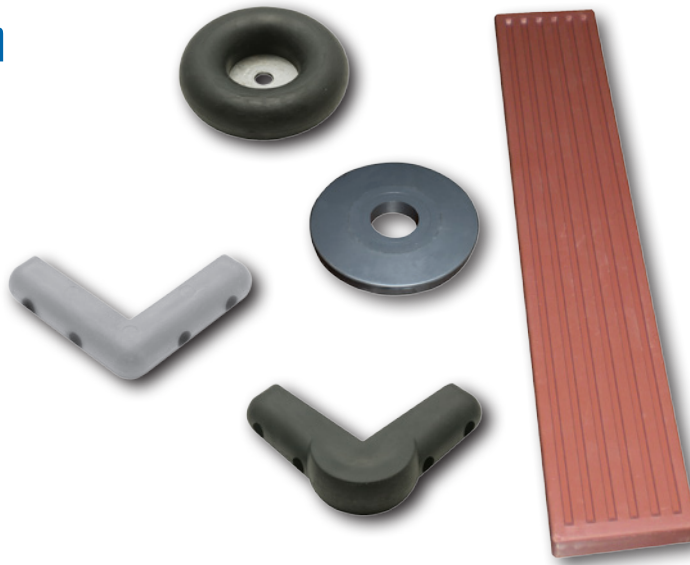
- Manufacturing
- Packaging
- Assembly
- Repairs
- Material Handling
- Displays
- Painting
- More ...

BP Protection Bumpers

Protect your equipment, walls and other structures 24 hours a day ... 7 days a week.

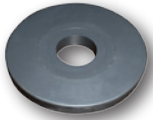
FEATURES

- Protects mobile equipment, stationary equipment, cargo and other structures from damage due to impacts
- Resistant to skidding, staining and marking
- Crack resistant & resilient
- Vibration & shock dampening
- Custom colors available



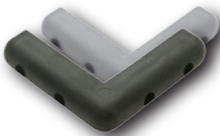
End (Round) Bumpers
Generally used on the ends of tubular handles. Protects equipment, walls, door facings and other structures.

Specifications	Bumper Number
End (Round) Bumpers	
Black 3-1/4" dia. x 7/8" thick. Center mounting bolt size 5/16"	BP30521201
Grey 3-1/4" dia. x 7/8" thick. Center mounting bolt size 5/16"	BP30521202



End (Round) Bumpers
Economical model with no metal inserts.

Specifications	Bumper Number
Economical End (Round) Bumpers	
3-1/2" diameter x 5/8" thick. Center diameter 1"	BP16551001



Corner Bumpers
Protects wide variety of mobile equipment from bumps and scrapes. Steel inserts included for greater durability. Ends of bumpers can be cut at notched area to make square ends.

Specifications	Bumper Number
Corner Bumpers	
Black 7/8" thick x 1" high x 3-1/2" long from inside corner to sides; Holes for #10 screws.	BP08646401
Grey 7/8" thick x 1" high x 3-1/2" long from inside corner to sides; Holes for #10 screws.	BP08646402



Reinforced Corner Bumpers
Similar to corner bumpers above but with extra material in main corner impact area

Specifications	Bumper Number
Reinforced Corner Bumpers	
Black 1" thick x 1-1/16" high x 3-1/16" long from inside corner to sides	BP08707001
Grey 1" thick x 1-1/16" high x 3-1/16" long from inside corner to side	BP08707002



End Cap Bumper Pad
Excellent protection for wood dollies. Easy slip-on installation.

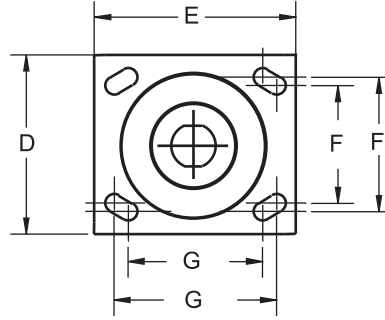
Specifications	Bumper Number
End Cap Bumper Pad	
Inside dimension 18" x 3" (Reddish Brown)	BP040410001

Optional Features

We carry top plates with optional dimensions and bolt hole patterns. As shown in the chart, these will interchange with standard top plates. For an optional top plate not listed, please consult factory. To order, begin with ST (swivel) or RT (Rigid) followed by the caster series number (i.e. 16), then end with the alpha designation (i.e. J).

Example: 16TM06201S
 ST16J
 Swivel top (ST), 16 series (16), bolt hole center (J)

Example: 272PD06201R
 RT272D
 Rigid top (RT), dual wheel (2), 72 series (72), bolt hole center (D)



Top Plate and Bolt Hole Center Chart

F & G Bolt Hole Centers (Inches)	D & E Top Plate Size (Inches)	Attaching Bolt (Inches)	Series 12, 16	Series 71	Series 72	Series 81	Series 94	Series 95	Series 18, 100, 110	Series 310, 410	Series 400
Slotted for 3 x 4 to 2-5/8 x 3-5/8	4 x 5	3/8	J	J							
Slotted for 3-3/8 x 5-1/4 to 2-7/16 x 4-15/16	4-1/2 x 6-1/4	1/2	K						K		
2-1/8 x 4	4 x 5	3/8		G							
3 x 3	4 x 4	3/8		H							
3-1/4 x 6	4-1/2 x 7-1/4	1/2			W	W					
4-1/8 x 4-1/2	5 x 5-1/2	3/8	D		D	D			D (110 only)		
4-7/8 x 6-3/4	Swivel 6-1/2 x 8 Rigid 6 x 8	5/8					C				
7 x 9-3/4	8-1/2 x 11	5/8						T			
Slotted for 4-5/8 x 5-1/2 to 4-3/8 x 5-5/8	6 x 7	1/2								S	N

Optional Overall Heights

Series	Wheel Diameter (Inches)	Optional Height (Inches)	Swivel Lead (Inches)	Swivel Option Number	Rigid Option Number
12, 16, 33	3-1/4	5-1/4	1-11/16	HS42	HR42
12, 16, 33	4	5-1/4	1-11/16	HS86	HR86
12, 16, 33	5	6-1/8	1-11/16	HS-50	HR50
12, 16, 33	5	6-3/4	1-3/4	HS54	HR54
12, 16, 33	6	6-7/8	2-1/2	HS56	HR56
12	6	7-1/4	1-3/4	HS82	HR82
16	6	7-3/8	1-3/4	HS59	HR59
16	6	7-1/2	1-7/8	HS60	HR60
62	6	7-3/4	1-3/4	HS85	HR85
12, 16	8	10	1-3/4	HS81	HR81
34, 62	8	9-1/2	2-1/4	HS76	HR76
34, 62	8	9-3/4	1-3/4	HS83	HR83
63	8	9-1/2	2-1/4	HS84	HR84
100	8	9-1/2	2-1/2	HS89	HR89

Replacement Parts

Axle and Bearing Components for Standard Models (Consult factory for parts not in this chart)

Caster Series	Wheel Hub Length (Inches)	Axle Hollow	Axle Solid	NUT	Spanner Bushing	Lock Washer	Roller Bearing	Plain Retaining Washer	Sealed Retaining Washer	Nylon sealed combowasher	Metal combowasher	Thrust Washer
DC, P2, 02 Series	1.25"	ZJ063502, ZJ063504		NL061600	ZF060824, ZF060826		ZB081718	WA081703				WA082400, WA082406
04 Series	1.25"	ZJ063510		NJ061600	ZF06082401							
05 Series	2.188"	ZJ085600	ZJ085603	NJ081311	ZF081240	WA081401	ZB12193001	WA121904	WA121990	WA121905		WA122603
12,16,18,40, 61,62,71,72, 110	2.188"	ZJ085400	ZJ085403	NL082000	ZF081239		ZB121930	WA121900	WA121990	WA121905	WA121999	WA122600
42,61,62,72, 78 Series	2.75"	ZJ086400	ZJ086403	NL082000	ZF081248		ZB121940	WA121900	WA121990	WA121905	WA121999	WA122600
63 Series	2.75"	ZJ126800		NL121001	ZF121648		ZB163140	WA163103	WA163190		WA163199	WA163900
44,81,84,90, 92,310, 410	3.25"	ZJ127600		NL121001	ZF121657, ZF162057		ZB163148, ZB203948	WA163103, WA203103	WA163190, WA203190		WA163199,	WA163900, WA204800
330 Series	3.25"	ZJ12760009	ZJ128010	NJ121000	ZF12165703	WA122006	ZB16314803	WA16310304	WA16319001		WA163199	WA16390001
600 Series	3.25"		ZJ161496	NL161403	ZF162057		ZB203148, ZB203948	WA203103, WA203903	WA203190, WA203950		WA163199,	WA163900, WA204800
90,92, 600 Series	4.25"	ZJ169601	ZJ161496	NL161403	ZF162073		ZB203964	WA203903	WA203990			WA204800

Axle and Bearing Components for Standard Models (Consult factory for parts not in this chart) (Continued)

Caster Series	Wheel Hub Length (Inches)	Precision Ball Bearing	Delrin Bearing (2 pieces)	Delrin Bearing (1 piece)	Bronze Bearing	Oillex Bearing	Drawn Cup Roller Bearing	Top Hat Spacer
DC, P2, 02 Series	1.25"							
04 Series	1.25"							
05 Series	2.188"		TF121912	TF121934	0H121908	Z0121935		
12,16,18,40, 61,62,71,72, 78,110	2.188"	ZA081903, ZA081904	TF121912	TF121934	0H121908	Z0121935	ZX121930	ZY0812001
42,61,62,72, 78 Series	2.75"		TF121912		0H121908			



Roller Bearing ZB121930 Shown



Spanner Bushing ZF081239 Shown



Metal Step Retaining Thrust Washer



Nylon Sealed Retaining Thrust Washer WA121905 Shown



Sealed Retaining Thrust Washer



Solid Axle & Nut ZJ085409 Shown



Hollow Axle & Nut ZJ085408 Shown

Replacement Parts



Tapered Roller Bearing

Tapered Roller Bearings and Spacers

Kit Number	Cup Only Part Number*	Cone Only Part Number*	Bearing ID (Inches)	Bearing OD (Inches)	Notes	Spacer Number	Spacer ID (Inches)	Spacer OD (Inches)	Spacer Length (Inches)
ZT082200	ZT082201	ZT082202	0.500	1.375		ZM082800	0.500	1.750	0.000
ZT122800	ZT122801	ZT122802	0.750	1.780		ZY121600	0.750	1.000	0.231
ZT123100	ZT123101	ZT123102	0.750	1.938		ZY121600	0.750	1.000	0.231
ZT163200	ZT163202	ZT163101	1.000	1.979		ZY162004	1.000	1.250	0.281
ZT163900	ZT163901	ZT163902	1.000	2.438		ZY162005	1.000	1.250	0.313
ZT203900	ZT163901	ZT203911	1.250	2.438	Wider	ZY202406	1.250	1.500	0.348
ZT203920	ZT203901	ZT203902	1.250	2.438	Narrower	ZY202404	1.250	1.500	0.281
ZT203940	ZT203901	ZT203802	1.250	2.438	Sealed	SD203013	1.250	1.875	0.000
ZT205000	ZT205001	ZT205002	1.250	3.125		ZY202606	1.250	1.625	0.375
ZT244100	ZT244102	ZT244101	1.500	2.563		ZY242806	1.500	1.750	0.375
ZT245000	ZT205001	ZT245001	1.500	3.125		ZY242806	1.500	1.750	0.375

* Purchased as kit only.



Industrial Ball



Pedestal Precision Ball



Precision Ball



Delrin



Bronze



Oil-impregnated Bearing
(Oil impregnated iron)

Other Bearing Types

Bearing Part Number	Description of Bearing	Bearing ID (Inches)	Bearing OD (Inches)	Bearing Length (Inches)	Notes/Suggestions	Requires Part Number
ZA081900	Industrial Ball	0.500	1.188	1.875		
ZA081902	Industrial Ball	0.500	1.188	2.438	Butt Bearing	
ZA081903	Pedestal Precision Ball	0.500	1.188	2.438	Pedestal Bearing	
57703.11	Pedestal Precision Ball	0.500	1.188	1.249	Pedestal Bearing	
57703.14	Stainless Steel Pedestal Precision Ball	0.500	1.188	1.249	Stainless Steel Pedestal Bearing	
ZA081904	Precision Ball	0.500	1.188	2.438	Pedestal Bearing	
ZA122500	Precision Ball	20mm	40mm	Any	6203-2RS	ZY0812001
TF121912	Delrin	0.750	1.188	Any	Not with Cam Brake	
TF121934	Delrin	0.750	1.188	2.438		WA122600 or WA122603
0I121912	Bronze	0.750	1.188	Any		
ZO081722	Oil impregnated iron	0.500	1.063	1.250		
ZO081926	Oil impregnated iron	0.500	1.188	1.875		
ZO081935	Oil impregnated iron	0.500	1.188	2.438		
ZO101926	Oil impregnated iron	0.625	1.188	1.875		
ZO101935	Oil impregnated iron	0.625	1.188	2.438		
ZO121926	Oil impregnated iron	0.750	1.188	1.875		
ZO121935	Oil impregnated iron	0.750	1.188	2.438		

Replacement Parts

Straight Roller Bearing and Retaining Washers

REPLACEMENT PARTS



Roller Bearing

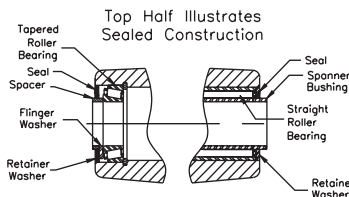


Nylon Sealed Retaining Thrust Washer



Powdered Iron Step Retaining Thrust Washer

Line drawing (below) section view shows typical wheel hub construction with sealed straight and tapered roller bearings. Note spacer tubes are used with tapered roller bearings which increases hub length 1/4" and facilitates proper loading of cup to cone. For non-sealed construction, seal is replaced with retainer and flinger washers.



Part Number	Roller Bearing ID (Inches)	Roller Bearing OD (Inches)	Roller Bearing Length (Inches)	Plain Retaining Washer Number	Rubber Sealed Retaining Washer	Nylon Combo Washer Number	Sintered Iron Combo Washer Number	Washer ID (inches)	Washer OD (inches)
ZB081718	0.500	1.063	1.125	WA081703	WA081790			0.500	1.063
ZB081922	0.500	1.188	1.375	WA121900				0.500	1.188
ZB081930	0.500	1.188	1.875	WA121900				0.500	1.188
ZB081932	0.500	1.188	2.000	WA121900				0.500	1.188
ZB101922	0.625	1.188	1.375	WA121900	WA101990			0.625	1.188
ZB101930	0.625	1.188	1.875	WA121900	WA101990			0.625	1.188
ZB101932	0.625	1.188	2.000	WA121900	WA101990			0.625	1.188
ZB101940	0.625	1.188	2.500	WA121900	WA101990			0.625	1.188
ZB121920	0.750	1.188	1.250	WA121900	WA121990	WA121905	WA121999	0.750	1.188
ZB121930	0.750	1.188	1.875	WA121900	WA121990	WA121905	WA121999	0.750	1.188
ZB12193001*	0.750	1.188	1.875	WA121904		WA121905		0.750	1.188
ZX121930	0.750	1.188	1.875	WA121900	WA121990	WA121905	WA121999	0.750	1.188
ZB121940	0.750	1.188	2.438	WA121900	WA121990	WA121905	WA121999	0.750	1.188
ZB142332	0.875	1.438	2.000	WA162303	WA142390			0.875	1.438
ZB162328	1.000	1.438	1.750	WA162303	WA162390			1.000	1.438
ZB162332	1.000	1.438	2.000	WA162303	WA162390			1.000	1.438
ZB163136	1.000	1.938	2.250	WA163103	WA163190		WA163199	1.000	1.938
ZB163140	1.000	1.938	2.500	WA163103	WA163190		WA163199	1.000	1.938
ZB163148	1.000	1.938	3.000	WA163103	WA163190		WA163199	1.000	1.938
ZB163164	1.000	1.938	4.000	WA163103	WA163190		WA163199	1.000	1.938
ZB183148	1.125	1.938	3.000	WA203103			WA203199	1.250	1.938
ZB203140	1.250	1.938	2.500	WA203103	WA203190		WA203199	1.250	1.938
ZB203148	1.250	1.938	3.000	WA203103	WA203190		WA203199	1.250	1.938
ZB203164	1.250	1.938	4.000	WA203103	WA203190		WA203199	1.250	1.938
ZB203948	1.250	2.438	3.000	WA203903	WA203990			1.250	2.438
ZB203964	1.250	2.438	4.000	WA203903	WA203990			1.250	2.438
ZB203980	1.250	2.438	5.000	WA203903	WA203990			1.250	2.438
ZB243948	1.500	2.438	3.000	WA243903	WA243990			1.500	2.438
ZB243964	1.500	2.438	4.000	WA243903	WA243990			1.500	2.438
ZB243980	1.500	2.438	5.000	WA243903	WA243990			1.500	2.438
ZB284964	1.625	3.063	4.000	WA284903				1.750	3.063
ZB284980	1.625	3.063	5.000	WA284903				1.750	3.063
ZB325264	2.000	3.250	4.000	WA325203				2.000	3.250
ZB325280	2.000	3.250	5.000	WA325203				2.000	3.250

* Stainless Steel

Note: Straight roller bearings include roller assembly with split outer race but does not include the retaining washers. Retaining washers are ordered separately in quantities of 2 per wheel.

Axles and Nuts



Solid Axle & Nut
ZJ085409
Shown



Hollow Axle & Nut
ZJ085408
Shown

Axle Part Number	Type	Matching Nut	Matching Lock Washer	Diameter (Inches)	Length (Inches)	Threads (Per Inch)	Notes
ZJ063502	Hollow	NL061600		0.375	2.188	16	No Grease Zerk
ZJ063504	Hollow	NL061600		0.375	2.188	16	
ZJ083510	Solid	NJ061600		0.375	2.188	16	Stainless Steel
ZJ084500	Hollow	NL082000		0.500	2.813	20	
ZJ085400	Hollow	NL082000		0.500	3.375	20	
ZJ085403	Solid	NL082000		0.500	3.375	20	
ZJ085600	Hollow	NJ081311	WA081401	0.500	3.500	13	Stainless Steel
ZJ085603	Solid	NJ081311	WA081401	0.500	3.500	13	Stainless Steel
ZJ086400	Hollow	NL082000		0.500	4.000	20	
ZJ086403	Solid	NL082000		0.500	4.000	20	
ZJ087200	Solid	NL082000		0.500	4.500	20	
ZJ105610	Hollow	NL101800		0.625	3.500	18	
ZJ126802	Hollow	NL121001		0.750	4.250	12	
ZJ127600	Hollow	NL121001		0.750	4.750	12	
ZJ127603	Solid	NL121001		0.750	4.750	12	
ZJ168000	Solid	NL161403		1.000	5.000	14	
ZJ169601	Hollow	NL161403		1.000	6.000	14	
ZJ169602	Solid	NL161403		1.000	6.000	14	

Hollow axles have zerk fitting for lubrication and solid axles are without lubrication fitting. All axles come complete with lock nut. Consult factory for optional slotted nuts and lock pins.

Replacement Parts

Spanner Bushings & Thrust Washers



Spanner Bushing



Nylon Sealed Retaining Thrust Washer



Powdered Iron Step Retaining Thrust Washer

Part Number	Spanner Bushing ID (Inches)	Spanner Bushing OD (Inches)	Spanner Bushing Length (Inches)	Spanner Material	Lubrication Holes	Matching Thrust Washers	Washer I.D. (Inches)	Washer O.D. (Inches)
ZF060824	0.375	0.500	1.500		1	WA082406	0.500	1.500
ZF06082401	0.375	0.500	1.500	Stainless	1			
ZF060826	0.375	0.500	1.625		1	WA082400	0.500	1.500
ZF081030	0.500	0.625	1.875		2	WA102400	0.625	1.500
ZF081033	0.500	0.625	2.063		2	WA102400	0.625	1.500
ZF081036	0.500	0.625	2.250		2	WA102400	0.625	1.500
ZF081038	0.500	0.625	2.375		2	WA102400	0.625	1.500
ZF081039	0.500	0.625	2.438		2	WA102400	0.625	1.500
ZF081046	0.500	0.625	2.875		2	WA102400	0.625	1.500
ZF081230	0.500	0.750	1.875		2	WA122600	0.750	1.625
ZF081236	0.500	0.750	2.250		2	WA122600	0.750	1.625
ZF081238	0.500	0.750	2.375		2	WA122600	0.750	1.625
ZF081239	0.500	0.750	2.438		2	WA122600	0.750	1.625
ZF081240	0.500	0.750	2.438	Stainless	2	WA122603	0.750	1.625
ZF081248	0.500	0.750	3.000		2	WA122600	0.750	1.625
ZF081264	0.500	0.750	4.000		none	WA122600	0.750	1.625
ZF101239	0.625	0.750	2.438		2	WA122600	0.750	1.625
ZF121648	0.750	1.000	3.000		2	WA163900	1.000	2.438
ZF121657	0.750	1.000	3.500		2	WA163900	1.000	2.438
ZF121664	0.750	1.000	4.000		none	WA163900	1.000	2.438
ZF121677	0.750	1.000	4.812		none	WA163900	1.000	2.438
ZF162057	1.000	1.250	3.563		none	WA203903	1.250	2.438
ZF162073	1.000	1.250	4.563		none	WA204800	1.250	3.000
ZF162089	1.000	1.250	5.563		none	WA204800	1.250	3.000
ZF202458	1.250	1.500	3.563		none	WA245600	1.500	3.500
ZF202473	1.250	1.500	4.563		none	WA245600	1.500	3.500
ZF202489	1.250	1.500	5.563		none	WA245600	1.500	3.500

All spanner bushings are hardened to form precision inner race for roller bearings. Except as noted by "none", all spanner bushings are cross drilled for lubrication through hollow axle. Thrust washers are hardened. They are not part of the spanner bushing assembly and must be ordered separately. Thrust washers are not required with ball bearings, 2 piece Delrin bearings, or with combo washers.