

# 93

## 93 Heavy Duty Casters

CAPACITY TO 7500

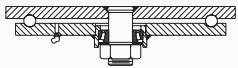


This caster is constructed from 5/8" thick AISI 1045 steel for those rugged applications. Design accommodates wider wheels for ease of use.

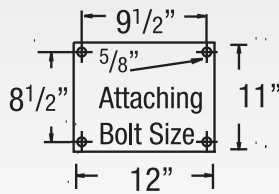
### TYPICAL APPLICATIONS

- Die carts
- Towed trailers
- Workstation
- Aircraft assembly

### SWIVEL CROSS SECTION



### MOUNTING OPTION



Premium Quality



Towing<sup>^</sup>



Environmentally Friendly

### FEATURES

- **Top Plate and Yoke Base:** 5/8" thick 1045 AISI steel plate for superior strength
- **Swivel Raceways:** 7" diameter precision machined load raceway with 5/8" steel balls and a tapered roller thrust bearing for easy swiveling
- **King Bolt:** 1-1/4" diameter bolt and nut heat treated for added strength
- **Legs:** 1/2" formed steel plate welded inside and out for maximum load capacity
- **Lubrication:** Zerk fitting in swivel section and wheel hub for ease of lubrication
- **Axle:** 1-1/4" solid axle
- Alternate or custom caster configurations available

### BRAKE OPTIONS

To order, add brake code below to end of model. Example: 93PY12609SP

**Poly Cam**  
specify **P**



**Face Contact**  
specify **F**

**Welded Swivel Lock**  
specify **L**



### BEARING OPTIONS



Straight  
Roller (01)



Tapered  
Roller (09)

+ For swivel models add "S", for rigid model add "R" to end of base caster number.

Wheel Diameter (Inches)	Tread Width (Inches)	Capacity (Lbs) (Based on normal operation)	Overall Height (Inches)	Swivel Lead (Inches)	Approx. Wt. (Lbs)	Base Caster Number+
-------------------------	----------------------	--	-------------------------	----------------------	-------------------	---------------------

### Vulkollan on Cast Iron (09 Tapered Roller Bearing)

Model	Wheel Diameter	Tread Width	Capacity	Overall Height	Swivel Lead	Approx. Wt.	Base Caster Number
VY	12	3 1/2	5300	15 3/4	4 1/2	93 1/2	93VY12609
	12	4	6925	15 3/4	4 1/2	96	93VY12709



### Phenolic (09 Tapered Roller Bearing)

Model	Wheel Diameter	Tread Width	Capacity	Overall Height	Swivel Lead	Approx. Wt.	Base Caster Number
TM	12	3 1/2	4000	15 3/4	4 1/2	79 1/2	93TM12609
	16	3	4000	19	4 1/2	89	93TM16509
	16	4	7500	19	4 1/2	100	93TM16709



### Laminated Phenolic (09 Tapered Roller Bearing)

Model	Wheel Diameter	Tread Width	Capacity	Overall Height	Swivel Lead	Approx. Wt.	Base Caster Number
TL	12	3 1/2	4000	15 3/4	4 1/2	86 1/2	93TL12609
	16	3	4000	19	4 1/2	88 3/4	93TL16509
	16	4	7500	19	4 1/2	99 1/2	93TL16709



### Cast Iron (09 Tapered Roller Bearing)

Model	Wheel Diameter	Tread Width	Capacity	Overall Height	Swivel Lead	Approx. Wt.	Base Caster Number
CA	12	3 1/2	4000	15 3/4	4 1/2	98 1/2	93CA12609
	16	4	5300	19	4 1/2	129 3/4	93CA16709



### Ductile Iron (01 Roller Bearing)

Model	Wheel Diameter	Tread Width	Capacity	Overall Height	Swivel Lead	Approx. Wt.	Base Caster Number
FM	12	3 1/2	6000	15 3/4	4 1/2	103 1/2	93FM12601



+ For swivel models add "S", for rigid model add "R" to end of base caster number.

### Moldon Rubber on Cast Iron (09 Tapered Roller Bearing)

Model	Wheel Diameter	Tread Width	Capacity	Overall Height	Swivel Lead	Approx. Wt.	Base Caster Number
MR	12	4	1600	15 3/4	4 1/2	92 1/2	93MR12709
	16	4	2000	19	4 1/2	111 3/4	93MR16709
	16	5	2570	19	4 1/2	125	93MR16809
	18	5	2800	21	4 1/2	149	93MR18809



### Polyurethane on Cast Iron (09 Tapered Roller Bearing)

Model	Wheel Diameter	Tread Width	Capacity	Overall Height	Swivel Lead	Approx. Wt.	Base Caster Number
PY	12	3 1/2	4110	15 3/4	4 1/2	93 1/2	93PY12609
	12	4	4800	15 3/4	4 1/2	96	93PY12709
	16	3	4260	19	4 1/2	116 3/4	93PY16509
	16	4	5970	19	4 1/2	131 1/4	93PY16709
	16	5	7500	19	4 1/2	145 3/4	93PY16809
	18	5	7500	21	4 1/2	152	93PY18809



### Thick Tread Polyurethane (09 Tapered Roller Bearing)

Model	Wheel Diameter	Tread Width	Capacity	Overall Height	Swivel Lead	Approx. Wt.	Base Caster Number
PX	12	4	5280	15 3/4	4 1/2	100	93PX12709
	16	3	4680	19	4 1/2	119	93PX16509
	16	4	6570	19	4 1/2	134	93PX16709
	16	5	7500	19	4 1/2	149	93PX16809

