

ALBION[®]

the caster experts

New Proprietary Poured Mold Techniques
for a Smoother, Cleaner Wheel with no Parting Lines

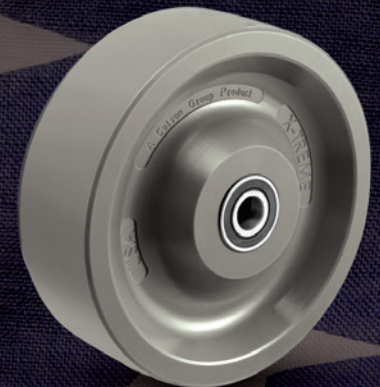
Solid Polyurethane X-treme Wheels



 **USA**
Made in the



X-treme



X-treme Plus

See Page 160

- Specifically designed for applications involving:
chemicals, solvents, and water
- Low rolling resistance and crowned tread for ergonomics
- Solid elastomer construction for no tread failures
- Non-marking and floor protective

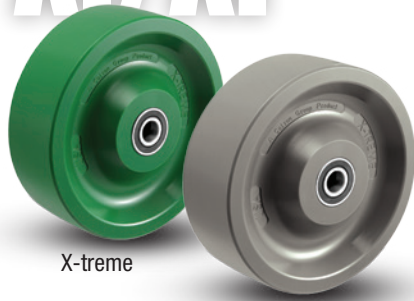


THE GLOBAL LEADER IN CASTERS AND WHEELS.

Made in the **USA**



XI/XP X-Treme Solid Polyurethane



X-treme

X-treme Plus

Albion X-treme and X-treme Plus wheels have been a very popular solid polyurethane choice for years, but now Albion has taken the wheels to a new level. Instead of compression molding, Albion now uses a proprietary poured mold technique that results in a cleaner, smoother looking wheel. These wheels are designed specifically for high-capacity manual applications involving chemicals, solvents or water. X-tremely low rolling resistance and the crowned tread make this wheel your choice for ergonomic applications. One-piece construction affords freedom from tread separation with an exceptionally long life. The solid polyurethane material is non-marking and provides floor protection.

FEATURES

- **Hardness:**
X-treme: 70 Shore D
X-treme Plus: 60 Shore D
- **Wheel face:** Crowned tread
- **Finish:**
X-treme: Green
X-treme Plus: Grey
- **Temperature Range:**
Up to +180°F

WHEEL OPTIONS

- Note: Select bearings featured are recommended for standard applications. For special applications or alternate bearings consult factory. See bearing information on page 13
- For customization & special application options, please consult factory

X-Treme Solid Polyurethane (XI)									
Wheel Diameter (Inches)	Tread Width (Inches)	Capacity (Lbs) (Based on manual operation)	Hub Length (Inches)	Bore ID (Inches)	Bearing ID (Inches)	Approx. Wt. (Lbs)	Wheel Number Roller Bearing (01)	Wheel Number Delrin Bearing (51)	Wheel Number Precision Ball (28)*
3-1/4	2	900	2-3/16	1-3/16	3/4	1	XI0320112	XI0325112	
3-1/4	2	900	2-7/16	1-9/16	1/2	1			XI0322808
4	2	1000	2-3/16	1-3/16	3/4	1	XI0420112	XI0425112	
4	2	1000	2-7/16	1-9/16	1/2	1			XI0422808
5	2	1000	2-3/16	1-3/16	3/4	1-1/2	XI0520112	XI0525112	
5	2	1000	2-7/16	1-9/16	1/2	1-1/2			XI0522808
6	2	1000	2-3/16	1-3/16	3/4	1-3/4	XI0620112	XI0625112	
6	2	1000	2-7/16	1-9/16	1/2	1-3/4			XI0622808
8	2	1000	2-3/16	1-3/16	3/4	4	XI0820112	XI0825112	
8	2	1000	2-7/16	1-9/16	1/2	4			XI0822808

X-Treme Plus Solid Polyurethane (XP)									
Wheel Diameter (Inches)	Tread Width (Inches)	Capacity (Lbs) (Based on manual operation)	Hub Length (Inches)	Bore ID (Inches)	Bearing ID (Inches)	Approx. Wt. (Lbs)	Wheel Number Roller Bearing (01)	Wheel Number Delrin Bearing (51)	Wheel Number Precision Ball (28)*
3-1/4"	2	900	2-3/16	1-3/16	3/4	1	XP0320112	XP0325112	
3-1/4"	2	900	2-7/16	1-9/16	1/2	1			XP0322808
4	2	1400	2-3/16	1-3/16	3/4	1	XP0420112	XP0425112	
4	2	1400	2-7/16	1-9/16	1/2	1			XP0422808
5	2	1200	2-3/16	1-3/16	3/4	1-1/2	XP0520112	XP0525112	
5	2	1200	2-7/16	1-9/16	1/2	1-1/2			XP0522808
6	2	1400	2-3/16	1-3/16	3/4	1-3/4	XP0620112	XP0625112	
6	2	1400	2-7/16	1-9/16	1/2	1-3/4			XP0622808
6	3	1700	3-1/2	2-7/16	3/4	5	XP0650112	XP0655112	
6	3	1700	3-1/2	2-7/16	3/4	5			XP0652812
8	2	1200	2-3/16	1-3/16	3/4	4	XP0820112	XP0825112	
8	2	1200	2-7/16	1-9/16	1/2	4			XP0822808
8	2-1/2	2000	3-1/2	2-7/16	3/4	5	XP0840112	XP0845112	
8	2-1/2	2000	3-1/2	2-7/16	3/4	5			XP0842812
8	3	2000	3-1/2	2-7/16	3/4	6	XP0850112	XP0855112	
8	3	2000	3-1/2	2-7/16	3/4	6			XP0852812
10	2-1/2	2500	3-1/2	2-7/16	3/4	7	XP1040112	XP1045112	
10	2-1/2	2500	3-1/2	2-7/16	3/4	7			XP1042812
10	3	2500	3-1/2	2-7/16	3/4	8	XP105112	XP1055112	
10	3	2500	3-1/2	2-7/16	3/4	8			XP1052812

Roller bearings are complete with spanner bushing & nylon sealed retaining washers.

* Pedestal Precision Ball (29) bearings also available. To order change "28" to "29".

Example: XI0322908

X-Treme Advantages

- Specifically designed for applications involving: Chemicals, Solvents, and Water
- USA made for fast deliveries
- No parting lines in the middle of the tread, providing a smooth roll and clean appearance
- Low rolling resistance and crowned tread for ergonomics
- Solid polyurethane construction for no tread failures
- Non-marking and floor protective