

# 92

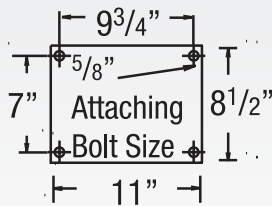
## 92 Heavy Duty Casters

CAPACITY TO 4800



92 Series Casters are designed specifically for power drawn trailers. These casters allow for ease of operation even on poor floor or surface conditions.

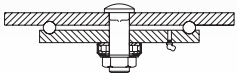
### MOUNTING OPTION



### TYPICAL APPLICATIONS

- Heavy duty trash dumpsters
- Trailer frames
- Automotive plants

### SWIVEL CROSS SECTION



Premium Quality



Towing<sup>^</sup>



Environmentally Friendly

### FEATURES

- **Top Plate and Yoke Base:** 5/8" thick 1045 AISI steel plate for superior strength
- **Swivel Raceways:** 7" diameter precision machined load raceway with 5/8" steel and tapered roller thrust bearing for easy swiveling
- **King Bolt:** 1" diameter bolt and nut heat treated for added strength
- **Legs:** 3/8" x 4" formed steel plate welded inside and out for maximum load capacity
- **Lubrication:** Zerk fitting in swivel section and wheel hub for ease of lubrication
- **Axle:** 3/4" hollow axle with recessed zerk for lubrication
- Alternate or custom caster configurations available

### RIG OPTIONS

- **Flush King Bolt** specify **KB03**

### BRAKE OPTIONS

To order, add brake code below to end of model. Example: 92PY08501SP

**Poly Cam**  
specify **P**



**Single Side** specify **SSB92**. **Double Sided** specify **DSB92**

**Face Contact**  
specify **F**



### BEARING OPTIONS



Straight Roller (01)



Tapered Roller (09)



Precision Ball (28)



**Wrap Around**  
specify **WB92**

**Welded Swivel Lock**  
specify **L**



Hand operated field installable **Swivel Lock** order **SL920000** separately (Yokes must be notched)

	Wheel Diameter (Inches)	Tread Width (Inches)	Capacity (Lbs) (Based on manual operation)	Overall Height (Inches)	Swivel Lead (Inches)	Approx. Wt. (Lbs)	Base Caster Number <sup>+</sup>
<b>Moldon Rubber on Cast Iron (01 Roller Bearing)</b>							
<b>MR</b>	8	3	900	11	3	48	<b>92MR08501</b>
	10	3	1000	12 <sup>7/8</sup>	3	50 <sup>1/2</sup>	<b>92MR10501</b>
	10	4*	1400	12 <sup>7/8</sup>	3 <sup>1/2</sup>	63 <sup>3/4</sup>	<b>92MR10701</b>
	12	3	1200	14 <sup>7/8</sup>	3 <sup>1/2</sup>	56 <sup>1/4</sup>	<b>92MR12501</b>
	12	3 <sup>1/2</sup> *	1500	14 <sup>7/8</sup>	4	63	<b>92MR12601</b>
	12	4*	1600	14 <sup>7/8</sup>	4	68 <sup>1/2</sup>	<b>92MR12701</b>

\*3-1/2" and 4" tread width model has solid axle, all others hollow axle.

	Wheel Diameter (Inches)	Tread Width (Inches)	Capacity (Lbs)	Overall Height (Inches)	Swivel Lead (Inches)	Approx. Wt. (Lbs)	Base Caster Number <sup>+</sup>
<b>Polyurethane on Cast Iron (01 Roller Bearing)</b>							
<b>PY</b>	8	3	2500	11	3	52 <sup>1/2</sup>	<b>92PY08501</b>
	10	3	3000	12 <sup>7/8</sup>	3	56 <sup>1/2</sup>	<b>92PY10501</b>
	10	4*	4200	12 <sup>7/8</sup>	3 <sup>1/2</sup>	67 <sup>3/4</sup>	<b>92PY10701</b>
	12	3	3500	14 <sup>7/8</sup>	3 <sup>1/2</sup>	65	<b>92PY12501</b>
	12	3 <sup>1/2</sup> *	4110	14 <sup>7/8</sup>	3 <sup>1/2</sup>	68 <sup>3/4</sup>	<b>92PY12601</b>
	12	4*	4800	14 <sup>7/8</sup>	3 <sup>1/2</sup>	71 <sup>1/2</sup>	<b>92PY12701</b>

\*3-1/2" and 4" tread width model has solid axle, all others hollow axle.

	Wheel Diameter (Inches)	Tread Width (Inches)	Capacity (Lbs) (Based on manual operation)	Overall Height (Inches)	Swivel Lead (Inches)	Approx. Wt. (Lbs)	Base Caster Number <sup>+</sup>
<b>Polyurethane on Cast Iron (01 Roller Bearing)</b>							
<b>PY 80A</b>	8	3	2000	11	3	52 <sup>1/2</sup>	<b>92PY0850180A</b>
	10	3	2400	12 <sup>7/8</sup>	3	56 <sup>1/2</sup>	<b>92PY1050180A</b>
	10	4*	3350	12 <sup>7/8</sup>	3 <sup>1/2</sup>	67 <sup>3/4</sup>	<b>92PY1070180A</b>
	12	3	2800	14 <sup>7/8</sup>	3 <sup>1/2</sup>	65	<b>92PY1250180A</b>
	12	3 <sup>1/2</sup> *	3280	14 <sup>7/8</sup>	3 <sup>1/2</sup>	68 <sup>3/4</sup>	<b>92PY1260180A</b>
	12	4*	3840	14 <sup>7/8</sup>	3 <sup>1/2</sup>	71 <sup>1/2</sup>	<b>92PY1270180A</b>

To Specify Rigid or Swivel, insert "R" or "S" before "80A". Example: 92PY08501R80A.

\*3-1/2" and 4" tread width model has solid axle, all others hollow axle.

	Wheel Diameter (Inches)	Tread Width (Inches)	Capacity (Lbs)	Overall Height (Inches)	Swivel Lead (Inches)	Approx. Wt. (Lbs)	Base Caster Number <sup>+</sup>
<b>Vulkollan on Cast Iron (09 Tapered Roller Bearing)*</b>							
<b>VY</b>	8	3	4000	11	3	52 <sup>1/2</sup>	<b>92VY08509</b>
	10	3	4800	12 <sup>7/8</sup>	3	56 <sup>1/2</sup>	<b>92VY10509</b>
	12	3	4800	14 <sup>7/8</sup>	3 <sup>1/2</sup>	65	<b>92VY12509</b>

\* Roller (01) and Precision Ball (28) bearings available. Change "09" to other bearing code. Roller example: 92VY08501

Continue on next page >>