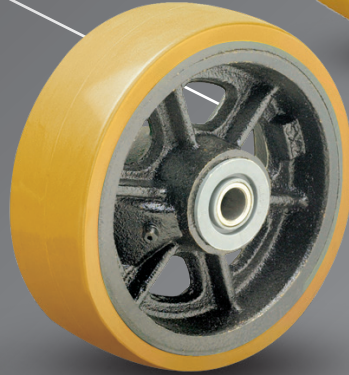


Looking for a **Heavy Duty Wheel**

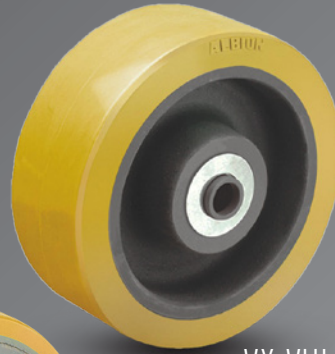
that also **PROTECTS  
YOUR FLOOR?**



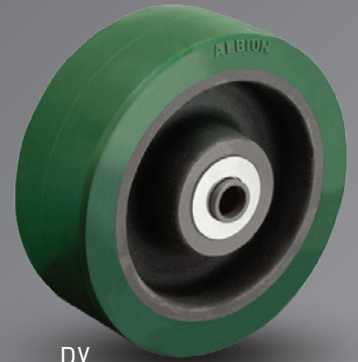
**NX**  
UP TO 7200 LB CAPACITY



**VY VULKOLLAN®**  
UP TO 6925 LB CAPACITY



**VX VULKOLLAN®**  
UP TO 5000 LB CAPACITY



**PX**  
UP TO 7700 LB CAPACITY

**HEAVY DUTY  
WHEELS** BY

**ALBION®**

**VY/VX VULKOLLAN®**  
UP TO 6925 LB CAPACITY



Highest quality polyurethane in the world. Vulkollan® wheels offer superior tear resistance, rebound resilience, dynamic load capacity, reliability, wear resistance, and structural strength. Wheels may last 40% longer than most polyurethane wheels, especially in extreme conditions.

**Features:**

- Hardness: 95 Shore A
- Wheel Face: Flat tread
- Finish: Orange/brown tread on cast iron core with clear coat
- Temperature Range: -40°F to +180°F

**NX** UP TO 7200 LB CAPACITY



Reinforced polymer, straight sided, and higher capacity. Wheels are machined, not injection molded.

**Features:**

- Hardness: 78-82 Shore D
- Wheel Face: Slight radius
- Finish: Black
- Temperature Range: -30°F to +200°F

**PX** UP TO 7700 LB CAPACITY



Polyurethane tread is chemically bonded to a cast iron core. High capacity polyurethane protects floors, is non-marking, and delivers quieter operations than standard metal wheels.

**Features:**

- Hardness: 95 Shore A
- Wheel Face: Flat or crown tread
- Finish: Green tread on black core
- Temperature Range: -40°F up to +180°F