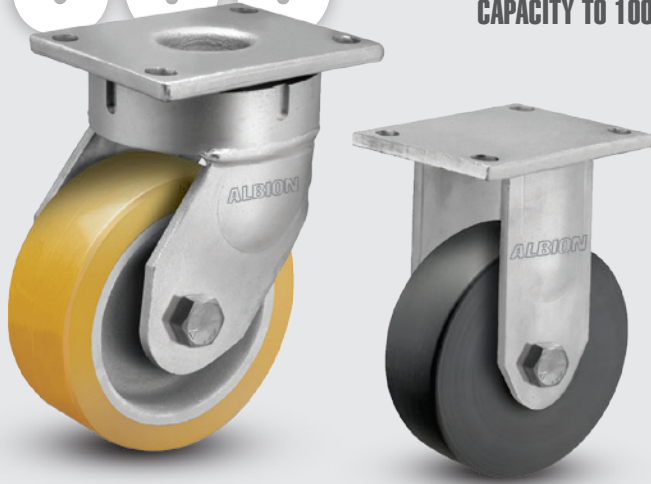


# 600

## Shockmaster™ Kingpinless Casters

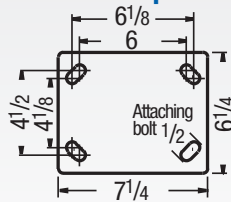
CAPACITY TO 10000



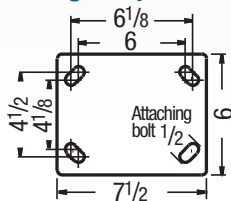
An added step up from the 610 (previous page), constructed of a one-piece forging for ultimate durability and strength. Highly recommended for automotive and aerospace applications. This caster is built to take the punishment of constant swiveling or for service where shock or impact loads would damage less rugged casters.

### MOUNTING OPTIONS

#### Swivel Top Plate



#### Rigid Top Plate



### TYPICAL APPLICATIONS

- Body dolly carts
- Engine dollies
- Material carts
- Chassis rack carts
- Paint line dollies
- Towed trash gondolas

### SWIVEL CROSS SECTION



+ For swivel models add "S", for rigid model add "R" to end of base caster number.

### Moldon Rubber on Cast Iron (09 Tapered Roller Bearing)\*

MR	Wheel Diameter (Inches)	Tread Width (Inches)	Capacity (Lbs) (Based on normal operation)	Overall Height (Inches)	Swivel Lead (Inches)	Base Caster Number+
	6	2 1/2	700	8 1/2	2 1/2	600MR06409
	6	3	750	8 1/2	2 1/2	600MR06509
	8	2 1/2	850	10 1/2	2 1/2	600MR08409
	8	2 1/2**	850	10 1/2	2 1/2	600MH08409
	8	3	900	10 1/2	2 1/2	600MR08509
	10	3	1000	12 1/2	2 1/2	600MR10509
	10	3**	1000	12 1/2	2 1/2	600MH10509
	10	4	1400	12 1/2	2 1/2	600MR10709
	12	3 1/2	1500	15 1/2	2 1/2	600MR12609
	12	4	1600	15 1/2	2 1/2	600MR12709

\*Roller (01) bearings available. Change "09" to "01". Example: 600MR10501.

\*\*Heavy-duty MH version of wheel.



Premium Quality



Towing^



Environmentally Friendly

### FEATURES

- **Top Plate:** 1/2" thick AISI 1045 steel one-piece forging precision machined and for long life
- **Swivel Section:** 3/4" ball bearings mounted in a 4-1/2" precision machined raceway. ZerK in swivel section
- **Legs:** 3/8" thick steel welded to yoke base using 100,000 psi weld filler
- **Axle:** 1" diameter
- Alternate or custom caster configurations available

### RIG OPTIONS

- Spring-loaded, dual wheel models available, consult factory
- Notched yoke base for swivel locks specify **NY600**

### BRAKE OPTIONS

To order, add brake code below to end of model. Example: 600PY08409SP

**Poly Cam** specify **P**



**PLB Integrated** specify **PLB**



**Single Side** specify **SSB610**. **Double Sided** specify **DSB610**



**Face Contact** specify **F**



**Hand Operated Detachable Swivel Lock** specify **L**.



### BEARING OPTIONS



Straight Roller (01)



Tapered Roller (09)



Precision Ball (28)



Radial Ball (27)

+ For swivel models add "S", for rigid model add "R" to end of base caster number.

Wheel Diameter (Inches)	Tread Width (Inches)	Capacity (Lbs) (Based on normal operation)	Overall Height (Inches)	Swivel Lead (Inches)	Base Caster Number+
-------------------------	----------------------	---	-------------------------	----------------------	---------------------

### Polyurethane on Aluminum (01 Roller Bearing)\*

PD	Wheel Diameter (Inches)	Tread Width (Inches)	Capacity (Lbs) (Based on normal operation)	Overall Height (Inches)	Swivel Lead (Inches)	Base Caster Number+
	8	2 1/2	2010	10 1/2	2 1/2	600PD08401
	8	3	2520	10 1/2	2 1/2	600PD08501
	10	2 1/2	2370	12 1/2	2 1/2	600PD10401
	10	3	3000	12 1/2	2 1/2	600PD10501

\*Tapered Roller (09) bearings available. Change "01" to "09". Example: 600PD08409.

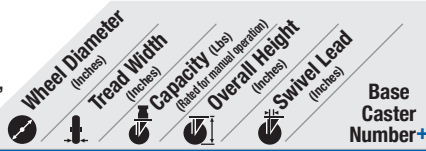
### Polyurethane on Cast Iron (09 Tapered Roller Bearing)\*

PY	Wheel Diameter (Inches)	Tread Width (Inches)	Capacity (Lbs) (Based on normal operation)	Overall Height (Inches)	Swivel Lead (Inches)	Base Caster Number+
	6	2 1/2	1600	8 1/2	2 1/2	600PY06409
	6	3	2000	8 1/2	2 1/2	600PY06509
	8	2 1/2	2000	10 1/2	2 1/2	600PY08409
	8	3	2500	10 1/2	2 1/2	600PY08509
	8	4	3800	10 1/2	2 1/2	600PY08709
	10	3	3000	12 1/2	2 1/2	600PY10509
	10	4	4200	12 1/2	2 1/2	600PY10709
	12	3 1/2	4110	15 1/2	2 1/2	600PY12609
	12	4	4800	15 1/2	2 1/2	600PY12709

\*Roller (01) bearings available. Change "09" to "01". Example: 600PY06401.

Continue on next page >>

+ For swivel models add "S", for rigid model add "R" to end of base caster number.



Thick Tread Polyurethane (09 Tapered Roller Bearing)*						
PX	Wheel Diameter (inches)	Tread Width (inches)	Capacity (lbs) (Based on manual operation)	Overall Height (inches)	Swivel Lead (inches)	Base Caster Number+
	6	3	2250	8 1/2	2 1/2	600PX06509
	8	3	2780	10 1/2	2 1/2	600PX08509
	8	4	3850	10 1/2	2 1/2	600PX08709
	10	3	3300	12 1/2	2 1/2	600PX10509
	10	4	4620	12 1/2	2 1/2	600PX10709
	12	4	5280	15 1/2	2 1/2	600PX12709

\*Roller (01) bearings available. Change "09" to "01".  
Example: 600PX10501.

Vulkollan on Cast Iron (09 Tapered Roller Bearing)*						
VY	Wheel Diameter (inches)	Tread Width (inches)	Capacity (lbs) (Based on manual operation)	Overall Height (inches)	Swivel Lead (inches)	Base Caster Number+
	6	2 1/2	2350	8 1/2	2 1/2	600VY06409
	6	3	3000	8 1/2	2 1/2	600VY06509
	8	2 1/2	2900	10 1/2	2 1/2	600VY08409
	8	3	4000	10 1/2	2 1/2	600VY08509
	10	2 1/2	3450	12 1/2	2 1/2	600VY10409
	10	3	5000	12 1/2	2 1/2	600VY10509

\*Roller (01) bearings available. Change "09" to "01".  
Example: 600VY10501.

Vulkollan Thick Tread Polyurethane (09 Tapered Roller Bearing)*						
VX	Wheel Diameter (inches)	Tread Width (inches)	Capacity (lbs) (Based on manual operation)	Overall Height (inches)	Swivel Lead (inches)	Base Caster Number+
	6	2 1/2	2350	8 1/2	2 1/2	600VX06409
	6	3	3000	8 1/2	2 1/2	600VX06509
	8	2 1/2	2900	10 1/2	2 1/2	600VX08409
	8	3	4000	10 1/2	2 1/2	600VX08509
	10	2 1/2	3450	12 1/2	2 1/2	600VX10409
	10	3	5000	12 1/2	2 1/2	600VX10509

\*Roller (01) bearings available. Change "09" to "01".  
Example: 600VX10501.

X-treme Plus Solid Polyurethane (01 Roller Bearing)*						
XP	Wheel Diameter (inches)	Tread Width (inches)	Capacity (lbs) (Based on manual operation)	Overall Height (inches)	Swivel Lead (inches)	Base Caster Number+
	8	2 1/2	2000	10 1/2	2 1/2	600XP08401
	8	3	2000	10 1/2	2 1/2	600XP08501
	10	3	2500	12 1/2	2 1/2	600XP10501

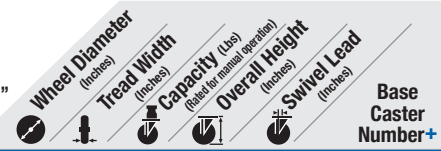
\*Precision Ball (28) bearings available. Change "01" to "28".

Phenolic (01 Roller Bearing)*						
TM	Wheel Diameter (inches)	Tread Width (inches)	Capacity (lbs) (Based on manual operation)	Overall Height (inches)	Swivel Lead (inches)	Base Caster Number+
	6	2 1/2	1600	8 1/2	2 1/2	600TM06401
	6	3	2000	8 1/2	2 1/2	600TM06501
	8	2 1/2	2000	10 1/2	2 1/2	600TM08401
	8	3	2500	10 1/2	2 1/2	600TM08501
	10	3	2900	12 1/2	2 1/2	600TM10501
	12	3 1/2	4000	15 1/2	2 1/2	600TM12601
	12	4	8000	15 1/2	2 1/2	600TM12701

\*Tapered Roller (09) bearings available. Change "01" to "09".  
Example: 600TM10509.

Trionix™ High Impact Polymer (28 Precision Ball Bearing)						
NX	Wheel Diameter (inches)	Tread Width (inches)	Capacity (lbs) (Based on manual operation)	Overall Height (inches)	Swivel Lead (inches)	Base Caster Number+
	6	2 1/2	7200	8 1/2	2 1/2	600NX06428
	6	3	7200	8 1/2	2 1/2	600NX06528
	8	2 1/2	7200	10 1/2	2 1/2	600NX08428
	8	3	7200	10 1/2	2 1/2	600NX08528
	10	2 1/2	7200	12 1/2	2 1/2	600NX10428
	10	3	7200	12 1/2	2 1/2	600NX10528

+ For swivel models add "S", for rigid model add "R" to end of base caster number.



Cast Iron (01 Roller Bearing)*						
CA	Wheel Diameter (inches)	Tread Width (inches)	Capacity (lbs) (Based on manual operation)	Overall Height (inches)	Swivel Lead (inches)	Base Caster Number+
	6	3	2800	8 1/2	2 1/2	600CA06501
	8	2 1/2	2300	10 1/2	2 1/2	600CA08401
	8	3	2800	10 1/2	2 1/2	600CA08501
	8	4	4000	10 1/2	2 1/2	600CA08701
	10	3	2800	12 1/2	2 1/2	600CA10501
	10	4	4000	12 1/2	2 1/2	600CA10701

\*Tapered Roller (09) bearings available. Change "01" to "09".  
Example: 600CA10509.

V-Grooved Cast Iron (01 Roller Bearing)*						
VG	Wheel Diameter (inches)	Tread Width (inches)	Capacity (lbs) (Based on manual operation)	Overall Height (inches)	Swivel Lead (inches)	Base Caster Number+
	6	2 1/2	2500	8 1/2	2 1/2	600VG06401
	8	2 1/2	2500	10 1/2	2 1/2	600VG08401
	8	3	2500	10 1/2	2 1/2	600VG08501

\*Tapered Roller (09) bearings available. Change "01" to "09".  
Example: 600VG06409.

Drop Forged V-Grooved Cast Iron (01 Roller Bearing)*						
VF	Wheel Diameter (inches)	Tread Width (inches)	Capacity (lbs) (Based on manual operation)	Overall Height (inches)	Swivel Lead (inches)	Base Caster Number+
	6	3	6000	8 1/2	2 1/2	600VF06501
	8	4	8350	10 1/2	2 1/2	600VF08701
	10	4	8350	12 1/2	2 1/2	600VF08701

\*Tapered Roller (09) bearings available. Change "01" to "09".  
Example: 600VF06509.  
Note: Capacity increases to 10000 lbs. if specifying tapered roller bearing.

Drop Forged Steel (01 Roller Bearings)*						
FS	Wheel Diameter (inches)	Tread Width (inches)	Capacity (lbs) (Based on manual operation)	Overall Height (inches)	Swivel Lead (inches)	Base Caster Number+
	6	2 1/2	4000	8 1/2	2 1/2	600FS06401
	8	2 1/2	4000	10 1/2	2 1/2	600FS08401
	8	3	4500	10 1/2	2 1/2	600FS08501
	10	3	5000	12 1/2	2 1/2	600FS10501
	10	4	8350	12 1/2	2 1/2	600FS10701

\*Tapered Roller (09) bearings available. Change "01" to "09".  
Example: 600FS10509. 6x2-1/2 capacity increases to 5000, 8x3 capacity increases to 5500, 10x3 capacity increases to 6000, 10x4 capacity increases to 10,000 with use of 09 bearing.

Heavy Duty Drop Forged Steel (01 Roller Bearings)*						
FH	Wheel Diameter (inches)	Tread Width (inches)	Capacity (lbs) (Based on manual operation)	Overall Height (inches)	Swivel Lead (inches)	Base Caster Number+
	8	3	6500	10 1/2	2 1/2	600FH08501
	10	3	6000	12 1/2	2 1/2	600FH10501

\*Tapered Roller (09) bearings available. Change "01" to "09".  
Example: 600FH10509. 10x3 capacity increases to 6500 with use of 09 bearing.

Ductile Iron Crowned Tread (01 Roller Bearing)*						
FR, FM, VM	Wheel Diameter (inches)	Tread Width (inches)	Capacity (lbs) (Based on manual operation)	Overall Height (inches)	Swivel Lead (inches)	Base Caster Number+
	6	2 1/2	3500	8 1/2	2 1/2	600FR06401
	6	3	6000	8 1/2	2 1/2	600FR06501
	8	3	6000	10 1/2	2 1/2	600FR08501
	10	3	6000	12 1/2	2 1/2	600FR10501

\*Tapered Roller (09) available. Change "01" to "09". Example: 600FR08509.  
Ductile Iron Flat Tread (FM) and V-Groove (VM) models available. Change FR wheel code to FM or VM. Example: 600FM08501.

600 SERIES • CAPACITY TO 10000

HEAVY DUTY KINGPINLESS