



Premium Quality

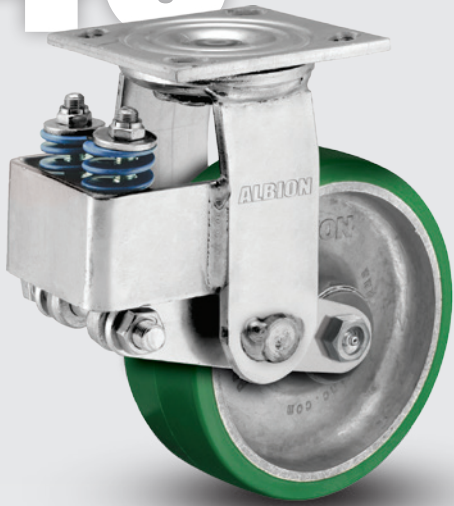


Environmentally Friendly

# 40

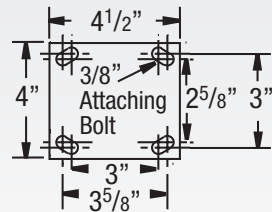
## Medium Duty Spring-Loaded Kingpin Casters

CAPACITY TO 500



Designed with the load in mind, 40 series protects from damaging shocks or unwanted vibration and movement. Noise levels are reduced through the dampening effect of these casters.

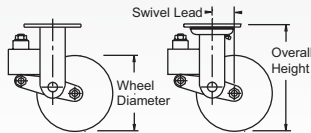
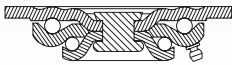
### MOUNTING OPTION



### TYPICAL APPLICATIONS

- Shock sensitive carts
- Aircraft jacks
- Monitoring equipment
- Material handling equipment

### SWIVEL CROSS SECTION



### FEATURES

- **Load Springs:** Maximum rated capacity loads will deflect wheel approximately 3/8" (50%). Different load springs for each series permits wide variation in ride "softness." They can be preloaded to obtain various degrees of deflection
- **Top Plate & Yoke Base:** Made from 1/4" steel plate and unnotched
- **Swivel Section:** Cold formed, hardened double ball bearing raceways minimize ball indentation and wear
- **Legs:** 1/4" steel cold formed to increase strength and welded to the yoke base
- **King Bolt:** 5/8" diameter orbitally spun steel rivet
- **Axle:** 1/2" diameter hollow axle complete with lock nut. Axle is solid for 28 & 29 ball bearings
- **Wheel Seals:** Nylon seal retaining/thrust washers
- Alternate or custom caster configurations available

### RIG OPTIONS

- Neoprene sealed swivel section specify **SS02**
- Hollow axle specify **ZF07**
- Available with **kingpinless** section, consult factory

### BRAKE OPTIONS

**Single Side and Double Sided Brakes** available, consult factory

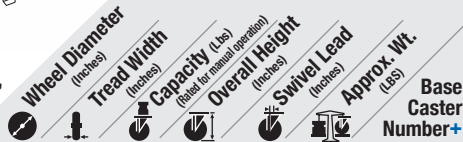
**Swivel Lock** available (welded), consult factory

### BEARING OPTIONS



Note: Wheel capacities can change with each bearing type. Consult factory.

+ For swivel models add "S", for rigid model add "R" to end of base caster number.



#### Neoprene on Aluminum (28 Precision Ball Bearing)

NP	Wheel Diameter (inches)	Tread Width (inches)	Capacity (Lbs)	Overall Height (inches)	Swivel Lead (inches)	Approx. Wt. (Lbs)	Base Caster Number+
5	2	500	8	13/4	10 1/2		40NP05228
6	2	500	8 1/2	13/4	11		40NP06228
8	2	500	10 1/2	13/4	13 1/4		40NP08228

#### Mold-on Rubber on Cast Iron (01 Roller Bearing)\*

MR	Wheel Diameter (inches)	Tread Width (inches)	Capacity (Lbs)	Overall Height (inches)	Swivel Lead (inches)	Approx. Wt. (Lbs)	Base Caster Number+
5	2	450	8	13/4	10 1/2		40MR05201
6	2	500	8 1/2	13/4	11		40MR06201
8	2	500	10 1/2	13/4	13 1/4		40MR08201

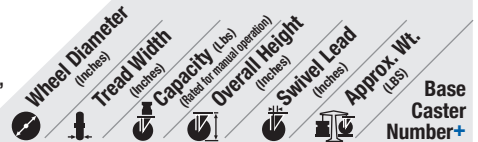
\*Industrial Ball (27) bearings available. To order change "01" to other bearing code. Industrial Ball example: 40MR05227.

#### Heavy Duty Moldon Rubber on Cast Iron (01 Roller Bearing)\*

MH	Wheel Diameter (inches)	Tread Width (inches)	Capacity (Lbs)	Overall Height (inches)	Swivel Lead (inches)	Approx. Wt. (Lbs)	Base Caster Number+
5	2	500	8	13/4	10 1/2		40MH05201
6	2	500	8 1/2	13/4	11		40MH06201
8	2	500	10 1/2	13/4	13 1/4		40MH08201

\*Industrial Ball (27) bearings available. To order change "01" to other bearing code. Industrial Ball example: 40MH05227.

+ For swivel models add "S", for rigid model add "R" to end of base caster number.



#### Mold-on Rubber on Aluminum (01 Roller Bearing)\*

MD	Wheel Diameter (inches)	Tread Width (inches)	Capacity (Lbs)	Overall Height (inches)	Swivel Lead (inches)	Approx. Wt. (Lbs)	Base Caster Number+
5	2	500	8	13/4	8		40MD05201
6	2	500	8 1/2	13/4	9		40MD06201
8	2	500	10 1/2	13/4	10 1/2		40MD08201

\*Industrial Ball (27) bearings available. To order change "01" to other bearing code. Industrial Ball example: 40MD05227.

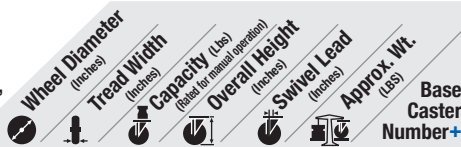
#### X-tra Soft Flat Tread (01 Roller Bearing)\*

XS	Wheel Diameter (inches)	Tread Width (inches)	Capacity (Lbs)	Overall Height (inches)	Swivel Lead (inches)	Approx. Wt. (Lbs)	Base Caster Number+
5	2	500	8	13/4	8		40XS05201
6	2	500	8 1/2	13/4	8 1/2		40XS06201
8	2	500	10 1/2	13/4	9 1/2		40XS08201

Prevenz™ antimicrobial models available. Add PREV to end of caster number. \*Industrial Ball (27) bearings available. To order change "01" to other bearing code. Industrial Ball example: 40XS05227.

Continue on next page >>

+ For swivel models add "S", for rigid model add "R" to end of base caster number.



**X-tra Soft Round Tread (01 Roller Bearing)\***

Model	Wheel Diameter (inches)	Tread Width (inches)	Capacity (lbs) (rated for manual operation)	Overall Height (inches)	Swivel Lead (inches)	Approx. Wt. (lbs)	Base Caster Number+
XR	6	2	450	8 1/2	1 3/4	8 1/2	40XR06201
	8	2	500	10 1/2	1 3/4	9 1/2	40XR08201
	Prevenz™ antimicrobial models available. Add PREV to end of caster number. *Industrial Ball (27) bearings available. To order change "01" to other bearing code. Industrial Ball example: 40XR06227.						

**Monoprene Semi-Pneumatic Black (27 Industrial Ball Bearing)**

Model	Wheel Diameter (inches)	Tread Width (inches)	Capacity (lbs) (rated for manual operation)	Overall Height (inches)	Swivel Lead (inches)	Approx. Wt. (lbs)	Base Caster Number+
SZ	6	2	250	8 1/2	1 3/4	8 1/2	40SZ06227
	8	2	280	10 1/2	1 3/4	9 1/2	40SZ08227

**Monoprene Semi-Pneumatic Grey (28 Precision Ball Bearing)**

Model	Wheel Diameter (inches)	Tread Width (inches)	Capacity (lbs) (rated for manual operation)	Overall Height (inches)	Swivel Lead (inches)	Approx. Wt. (lbs)	Base Caster Number+
SV	6	2	250	8 1/2	1 3/4	8 1/2	40SV06228
	8	2	280	10 1/2	1 3/4	9 1/2	40SV08228

**Polyurethane on Aluminum Flat Tread (01 Roller Bearing)\***

Model	Wheel Diameter (inches)	Tread Width (inches)	Capacity (lbs) (rated for manual operation)	Overall Height (inches)	Swivel Lead (inches)	Approx. Wt. (lbs)	Base Caster Number+
PD	5	2	500	8	1 3/4	9	40PD05201
	6	2	500	8 1/2	1 3/4	8 3/4	40PD06201
	8	2	500	10 1/2	1 3/4	10	40PD08201
*Industrial Ball (27) bearings available. To order change "01" to other bearing code. Industrial Ball example: 40PD05227.							

**Polyurethane on Cast Iron (01 Roller Bearing)\***

Model	Wheel Diameter (inches)	Tread Width (inches)	Capacity (lbs) (rated for manual operation)	Overall Height (inches)	Swivel Lead (inches)	Approx. Wt. (lbs)	Base Caster Number+
PY	5	2	500	8	1 3/4	12 1/4	40PY05201
	6	2	500	8 1/2	1 3/4	12 3/4	40PY06201
	8	2	500	10 1/2	1 3/4	15 1/4	40PY08201
*Industrial Ball (27) bearings available. To order change "01" to other bearing code. Industrial Ball example: 40PY05227.							

**Polyurethane on Aluminum Round Tread (28 Precision Ball Bearing)**

Model	Wheel Diameter (inches)	Tread Width (inches)	Capacity (lbs) (rated for manual operation)	Overall Height (inches)	Swivel Lead (inches)	Approx. Wt. (lbs)	Base Caster Number+
AX	5	2	500	8	1 3/4	11	40AX05228
	6	2	500	8 1/2	1 3/4	12 1/2	40AX06228
	8	2	500	10 1/2	1 3/4	13	40AX08228

85 Shore A

**Polyurethane on Aluminum Round Tread (28 Precision Ball Bearing)**

Model	Wheel Diameter (inches)	Tread Width (inches)	Capacity (lbs) (rated for manual operation)	Overall Height (inches)	Swivel Lead (inches)	Approx. Wt. (lbs)	Base Caster Number+
PM	5	2	500	8	1 3/4	11	40PM05228
	6	2	500	8 1/2	1 3/4	12 1/2	40PM06228
	8	2	500	10 1/2	1 3/4	13	40PM08228

95 Shore A

**Polyurethane on Aluminum Round Tread (28 Precision Ball Bearing)**

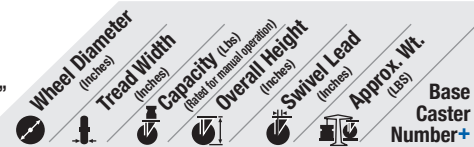
Model	Wheel Diameter (inches)	Tread Width (inches)	Capacity (lbs) (rated for manual operation)	Overall Height (inches)	Swivel Lead (inches)	Approx. Wt. (lbs)	Base Caster Number+
PM 80A	5	2	500	8	1 3/4	11	40PM0522880A
	6	2	500	8 1/2	1 3/4	12 1/2	40PM0622880A
	8	2	500	10 1/2	1 3/4	13	40PM0822880A

80 Shore A To Specify Rigid or Swivel, insert "R" or "S" before "80A." Example: 40PM08228R80A.

**Solid Elastomer (28 Precision Bearing)**

Model	Wheel Diameter (inches)	Tread Width (inches)	Capacity (lbs) (rated for manual operation)	Overall Height (inches)	Swivel Lead (inches)	Approx. Wt. (lbs)	Base Caster Number+
SE	5	2	500	8	1 3/4	7 1/4	40SE05228
	6	2	500	8 1/2	1 3/4	7 3/4	40SE06228
	8	2	500	10 1/2	1 3/4	9 1/4	40SE08228

+ For swivel models add "S", for rigid model add "R" to end of base caster number.



**X-Treme™ Plus Solid Polyurethane (01 Roller Bearing)\***

Model	Wheel Diameter (inches)	Tread Width (inches)	Capacity (lbs) (rated for manual operation)	Overall Height (inches)	Swivel Lead (inches)	Approx. Wt. (lbs)	Base Caster Number+
XP	5	2	500	8	1 3/4	7 1/4	40XP05201
	6	2	500	8 1/2	1 3/4	7 3/4	40XP06201
	8	2	500	10 1/2	1 3/4	9 1/4	40XP08201
*Industrial Ball (27) bearings available. To order change "01" to other bearing code. Industrial Ball example: 40XP05227.							

**Maxim® (01 Roller Bearing)\***

Model	Wheel Diameter (inches)	Tread Width (inches)	Capacity (lbs) (rated for manual operation)	Overall Height (inches)	Swivel Lead (inches)	Approx. Wt. (lbs)	Base Caster Number+
NG	5	2	500	8	1 3/4	9	40NG05201
	6	2	500	8 1/2	1 3/4	9 1/2	40NG06201
	8	2	500	10 1/2	1 3/4	11 1/4	40NG08201
Prevenz™ antimicrobial models available. Add PREV to end of caster number. *Industrial Ball (27) bearings available. To order change "01" to other bearing code. Industrial Ball example: 40NG05227.							

**Trionix™ High Impact Polymer (28 Precision Ball Bearing)**

Model	Wheel Diameter (inches)	Tread Width (inches)	Capacity (lbs) (rated for manual operation)	Overall Height (inches)	Swivel Lead (inches)	Approx. Wt. (lbs)	Base Caster Number+
NX	5	2	500	8	1 3/4	12 1/4	40NX05228
	6	2	500	8 1/2	1 3/4	12 3/4	40NX06228
	8	2	500	10 1/2	1 3/4	15 1/4	40NX08228

**White Nylon (01 Roller Bearing)**

Model	Wheel Diameter (inches)	Tread Width (inches)	Capacity (lbs) (rated for manual operation)	Overall Height (inches)	Swivel Lead (inches)	Approx. Wt. (lbs)	Base Caster Number+
NW	5	2	500	8	1 3/4		40NW05201
	6	2	500	8 1/2	1 3/4		40NW06201
	8	2	500	10 1/2	1 3/4		40NW08201

**Glass Filled Polypropylene (01 Roller Bearing)**

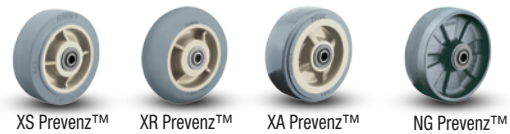
Model	Wheel Diameter (inches)	Tread Width (inches)	Capacity (lbs) (rated for manual operation)	Overall Height (inches)	Swivel Lead (inches)	Approx. Wt. (lbs)	Base Caster Number+
RT	5	2	500	8	1 3/4		40RT05201
	6	2	500	8 1/2	1 3/4		40RT06201
	8	2	500	10 1/2	1 3/4		40RT08201

**Heavy Duty Glass Filled Nylon (01 Roller Bearing)**

Model	Wheel Diameter (inches)	Tread Width (inches)	Capacity (lbs) (rated for manual operation)	Overall Height (inches)	Swivel Lead (inches)	Approx. Wt. (lbs)	Base Caster Number+
DT	5	2	500	8	1 3/4		40DT05201
	6	2	500	8 1/2	1 3/4		40DT06201
	8	2	500	10 1/2	1 3/4		40DT08201

**Prevenz™ Antimicrobial Wheels**

The EPA registered and FDA compliant antimicrobial additive used in Prevenz™ wheels is designed to suppress the growth of a variety of destructive and odor causing microbes including bacteria, molds, mildew and fungi. To order add "PREV" to end of caster number.



40 SERIES • CAPACITY TO 500

SPRING LOADED