



REGENT

BUILT TO
HANDLE IT ALL

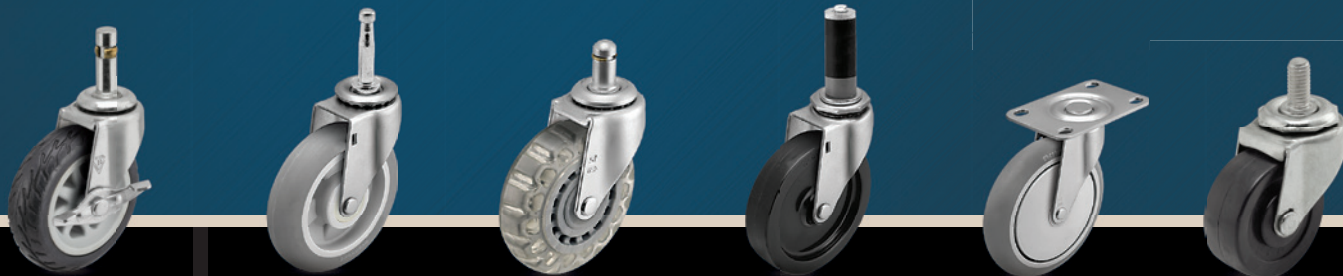
VERSATILE & DEPENDABLE

Shepherd Regent casters are USA-made with high-strength steel rigs for increased strength and durability. Multiple fastenings, wheel types, and finishes exist for the Regent series, providing great flexibility of style and usage.



3D CAD MODELS
AVAILABLE ONLINE

Visit Website for details



Your equipment deserves the best



Consult the NSF listing page on a part specific basis for NSF requirements.

Features

- Industry leading selection and overall value
- Fast deliveries for any order quantity
- High-strength & heat treated steel for increased durability and caster life
- Dual ball raceways
- RoHS compliant zinc plating for corrosion resistance
- Octagon washer on stem models for easy installation
- NSF approved (less thread guards)

Applications

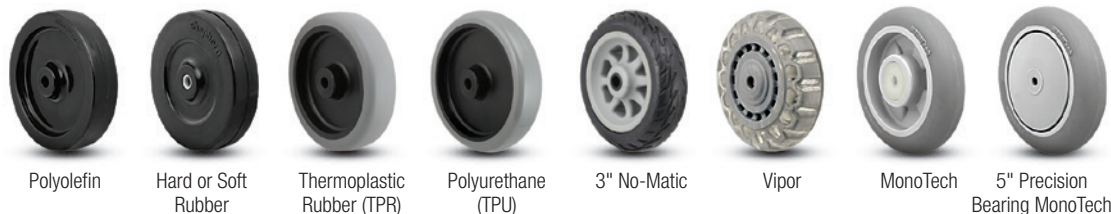
- Store fixtures
- Carts
- Institutional Equipment
- Food Service Equipment
- Furniture
- Janitorial Equipment
- Office Equipment
- Racks and Storage Equipment
- Medical Equipment

Options

- **Brakes:** available on all sizes (see below and product pages for details).
- **Finishes:** Zinc plating standard; optional finishes available (see below).
- **Fastenings & Wheels:** additional fastening sizes and wheel options available. Consult factory.
- **1-5/8" Diameter Models:** see Mighty-Mite on page 34.



Wheel Selection



	Polyolefin	Hard or Soft Rubber	Thermoplastic Rubber (TPR)	Polyurethane (TPU)	3" No-Matic	Vipor	MonoTech	5" Precision Bearing MonoTech
Floor Protection*	✓	✓	✓+	✓+	✓+	✓+	✓+	✓+
Non-Marking	✓	✓	✓+	✓+	✓+	✓+	✓+	✓+
Durability	✓+	✓	✓	✓+	✓	✓+	✓+	✓+
Cushioned Ride		✓+(soft)	✓	✓	✓+	✓	✓+	✓+
Chemical Resistance	✓+	✓	✓	✓+	✓	✓+	✓+	✓+

*See pages 40 for application details.

Brake Selection



Side Brakes for 2", 2-1/2" and 3" models. Add **[B]** at end of model.



Top Lock Brakes 3" and 4" diameter models. Add **[TL]** at end of model. Not compatible with top plate models.



Tread Lock Brakes 4" and 5" models. Add **[B]** at end of model.



Side Brakes 4" and 5" models. Add **[SB]** at end of model.

Finish Options

Replace standard Zinc **[ZN]** in Part Number with appropriate finish code. Minimum order quantities may apply.



Socket Options

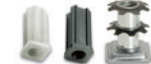
Shepherd has many solutions to help you mount your casters to your equipment quickly and easily. See pages 48-49 for more information.



Connects casters to wood



Connects casters to round tubes



Connects casters to square tubes



Weldable caster mount



Metal T nut



Connect casters to PVC pipe legs



Connect casters to threaded pipes



Corner brackets



Threaded



Grip Neck



Grip Ring



Expanding Adapter

Stem Models

Wheel Diameter (Inches)	Tread Width (Inches)	Mounting Height (Inches)	Swivel Radius (Inches)	Tread Type	Dynamic Load (Pounds)	Base Model Number (Add fastening code)	Fastening Selection*
2"	13/16"	2-5/8"	1-15/16" Side Brake: 2-1/8"	Soft Rubber	80	PRE20...ZN-3R	Threaded: 532, 507, 500, 637, 605, 634 Grip Neck: 302 Grip Ring: 223, 211, 222, 273
				Thermoplastic Rubber	80	PRE20...ZN-TPR	
				Hard Rubber	90	PRE20...ZN-3H	
				Polyurethane	90	PRE20...ZN-TPU	
				Solid Wall Polyolefin	90	PRE20...ZN-3ES	
				Polyolefin	90	PRE20...ZN-3E	
				Vipor	90	PRE20...ZN-VPR01(CG)	
2-1/2"	13/16"	3-1/8"	Swivel & Side Brake: 2-1/8"	Soft Rubber	80	PRE25...ZN-3R	Threaded: 532, 507, 500, 637, 634, 605 Grip Neck: 302 Grip Ring: 223, 211, 222, 273
				Thermoplastic Rubber	80	PRE25...ZN-TPR	
				Hard Rubber	95	PRE25...ZN-3H	
				Polyurethane	95	PRE25...ZN-TPU	
				Polyolefin	95	PRE25...ZN-3E	
3"	13/16"	3-1/2"	Swivel and Side Brake: 2-1/2" Top Lock Brake: 3-5/16"	Soft Rubber	110	PRE30...ZN-3R	Threaded: 532, 507, 500, 637, 634, 605, 748 Grip Neck: 302 Grip Ring: 223, 211, 222, 273
				Thermoplastic Rubber	110	PRE30...ZN-TPR	
				No-Matic	110	PRE30...ZN-NOM	
				Hard Rubber	120	PRE30...ZN-3H	
				Polyurethane	120	PRE30...ZN-TPU	
				Polyolefin	120	PRE30...ZN-3E	
				MonoTech	120	PRE30...ZN-MNT	
				Vipor	120	PRE30...ZN-VPR01(CG)	
4"	15/16"	4-3/4"	3-7/16" Side Brake: 3-1/2" Top Lock Brake: 4-1/16"	Soft Rubber	125	PRE40...ZN-3R	Threaded: 605, 741, 748, 705, 800, 806 Grip Ring: 211, 273, 204 Expanding Adapter: 440-455
				Thermoplastic Rubber	125	PRE40...ZN-TPR	
				Hard Rubber	150	PRE40...ZN-3H	
				Polyurethane	150	PRE40...ZN-TPU	
				Polyolefin	150	PRE40...ZN-3E	
				MonoTech	150	PRE40...ZN-MNT	
				Vipor	120	PRE40...ZN-VPR01(CG)	
5"	15/16"	5-3/4"	Swivel & Brake: 4-1/8"	Soft Rubber	130	PRE50...ZN-3R	Threaded: 605, 741, 748, 705, 800, 806 Grip Ring: 211, 273, 204 Expanding Adapter: 440-455
				Thermoplastic Rubber	130	PRE50...ZN-TPR	
				Hard Rubber	150	PRE50...ZN-3H	
				Polyurethane	150	PRE50...ZN-TPU	
				Polyolefin	150	PRE50...ZN-3E	
				MonoTech	160	PRE50...ZN-MNT	
				MonoTech Precision Bearing	160	PRE50...ZN-MNT33(GG)	

*To order, include blue fastener code in **Base Model Number**. Example: PRE40605ZN-3R ▲

Threaded Stem

532	507	500	637	605	634	741	748	705	800	806
3/4" UNC18 5/16"	1" UNC18 5/16"	1-1/2" UNC18 5/16"	3/4" UNC16 3/8"	1-1/2" UNC16 3/8"	1" UNC16 3/8"	1" UNC13 1/2"	1-1/2" UNC13 1/2"	2-13/16" UNC13 1/2"	1-1/2" UNC14 7/16"	2-1/4" UNC14 7/16"

Grip Neck Grip Ring Stem

302	223	211	222	273	204
1-1/2" 5/16"	7/8"	1-7/16" 7/16"	1" 3/8"	1-3/8" 7/16"	2" 7/16"
				Brass Band	Brass Band

Expanding Adapter Stem

Fits Round Tube	Fits Square Tube
Tubing ID Range . Code	Tubing ID Range . Code
3/4"-13/16"440	7/8"-15/16"451
7/8"-15/16"441	1" - 1-1/16"452
1" - 1-1/16"442	1-1/8" - 1-3/16"453
1-1/8" - 1-3/16"443	1-1/4" - 1-5/16"454
1-1/4" - 1-5/16"444	1-3/8" - 1-7/16"455
1-3/8" - 1-7/16"445	
1-1/2" - 1-9/16"446	
1-5/8" - 1-11/16"447	



Side Brakes for 2", 2-1/2" and 3" models. Add [B] at end of model.



Top Lock Brakes 3" and 4" diameter models. Add [TL] at end of model.



Tread Lock Brakes 4" and 5" models. Add [B] at end of model.



Side Brakes 4" and 5" models. Add [SB] at end of model.



Swivel Top Plate



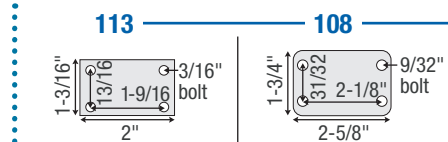
Rigid Top Plate

Top Plate Models

Wheel Diameter (Inches)	Tread Width (Inches)	Mounting Height (Inches)	Swivel Radius (Inches)	Tread Type	Dynamic Load (Pounds)	Swivel Base Model Number (Add fastening code)	Rigid Base Model Number	Fastening Selection*
2"	13/16"	2-5/8"	1-15/16" Side Brake: 2-1/8"	Soft Rubber	80	PRE20___ZN-3R		Swivel: 113, 108
				Thermoplastic Rubber	80	PRE20___ZN-TPR		
				Hard Rubber	90	PRE20___ZN-3H		
				Polyurethane	90	PRE20___ZN-TPU		
				Solid Wall Polyolefin	90	PRE20___ZN-3ES		
				Polyolefin	90	PRE20___ZN-3E		
				Vipor	90	PRE20___ZN-VPR01(CG)		
2-1/2"	13/16"	3-1/8"	Swivel & Side Brake: 2-1/8"	Soft Rubber	80	PRE25___ZN-3R		Swivel: 113, 108
				Thermoplastic Rubber	80	PRE25___ZN-TPR		
				Hard Rubber	95	PRE25___ZN-3H		
				Polyurethane	95	PRE25___ZN-TPU		
				Polyolefin	95	PRE25___ZN-3E		
3"	13/16"	3-1/2"	Swivel and Side Brake: 2-1/2" Top Lock Brake: 3-5/16"	Soft Rubber	110	PRE30___ZN-3R	PRI30120ZN-3R	Swivel: 113, 108, 120 Rigid: 120
				Thermoplastic Rubber	110	PRE30___ZN-TPR	PRI30120ZN-TPR	
				No-Matic	110	PRE30___ZN-NOM	PRI30120ZN-NOM	
				Hard Rubber	120	PRE30___ZN-3H	PRI30120ZN-3H	
				Polyurethane	120	PRE30___ZN-TPU	PRI30120ZN-TPU	
				Polyolefin	120	PRE30___ZN-3E	PRI30120ZN-3E	
				MonoTech	120	PRE30___ZN-MNT	PRI30120ZN-MNT	
				Vipor	120	PRE30___ZN-VPR01(CG)	PRI30120ZN-VPR01(CG)	
4"	15/16"	4-7/8"	3-7/16" Side Brake : 3-1/2" Top Lock Brake: 4-1/16"	Soft Rubber	125	PRE40___ZN-3R	PRI40120ZN-3R	Swivel: 120 Rigid: 120
				Thermoplastic Rubber	125	PRE40___ZN-TPR	PRI40120ZN-TPR	
				Hard Rubber	150	PRE40___ZN-3H	PRI40120ZN-3H	
				Polyurethane	150	PRE40___ZN-TPU	PRI40120ZN-TPU	
				Polyolefin	150	PRE40___ZN-3E	PRI40120ZN-3E	
				MonoTech	150	PRE40___ZN-MNT	PRI40120ZN-MNT	
				Vipor	120	PRE40___ZN-VPR01(CG)	PRI40120ZN-VPR01(CG)	
5"	15/16"	5-7/8"	Swivel & Side Brake: 4-1/8"	Soft Rubber	130	PRE50___ZN-3R	PRI50120ZN-3R	Swivel: 120 Rigid: 120
				Thermoplastic Rubber	130	PRE50___ZN-TPR	PRI50120ZN-TPR	
				Hard Rubber	150	PRE50___ZN-3H	PRI50120ZN-3H	
				Polyurethane	150	PRE50___ZN-TPU	PRI50120ZN-TPU	
				Polyolefin	150	PRE50___ZN-3E	PRI50120ZN-3E	
				MonoTech	160	PRE50___ZN-MNT	PRI50120ZN-MNT	
				MonoTech Precision Bearing	160	PRE50___ZN-MNT33(GG)	PRI50120ZN-MNT33(GG)	

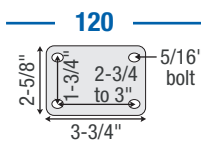
*To order, include **blue** fastener code in **Base Model Number**. Example: PRE30**113**ZN-3R

Swivel Top Plate



Note: 113 plate is not NSF listed for food service industry.

Rigid Top Plate



Side Brakes for 2", 2-1/2" and 3" models. Add **[B]** at end of model.



Tread Lock Brakes 4" and 5" models. Add **[B]** at end of model.



Side Brakes 4" and 5" models. Add **[SB]** at end of model.

